

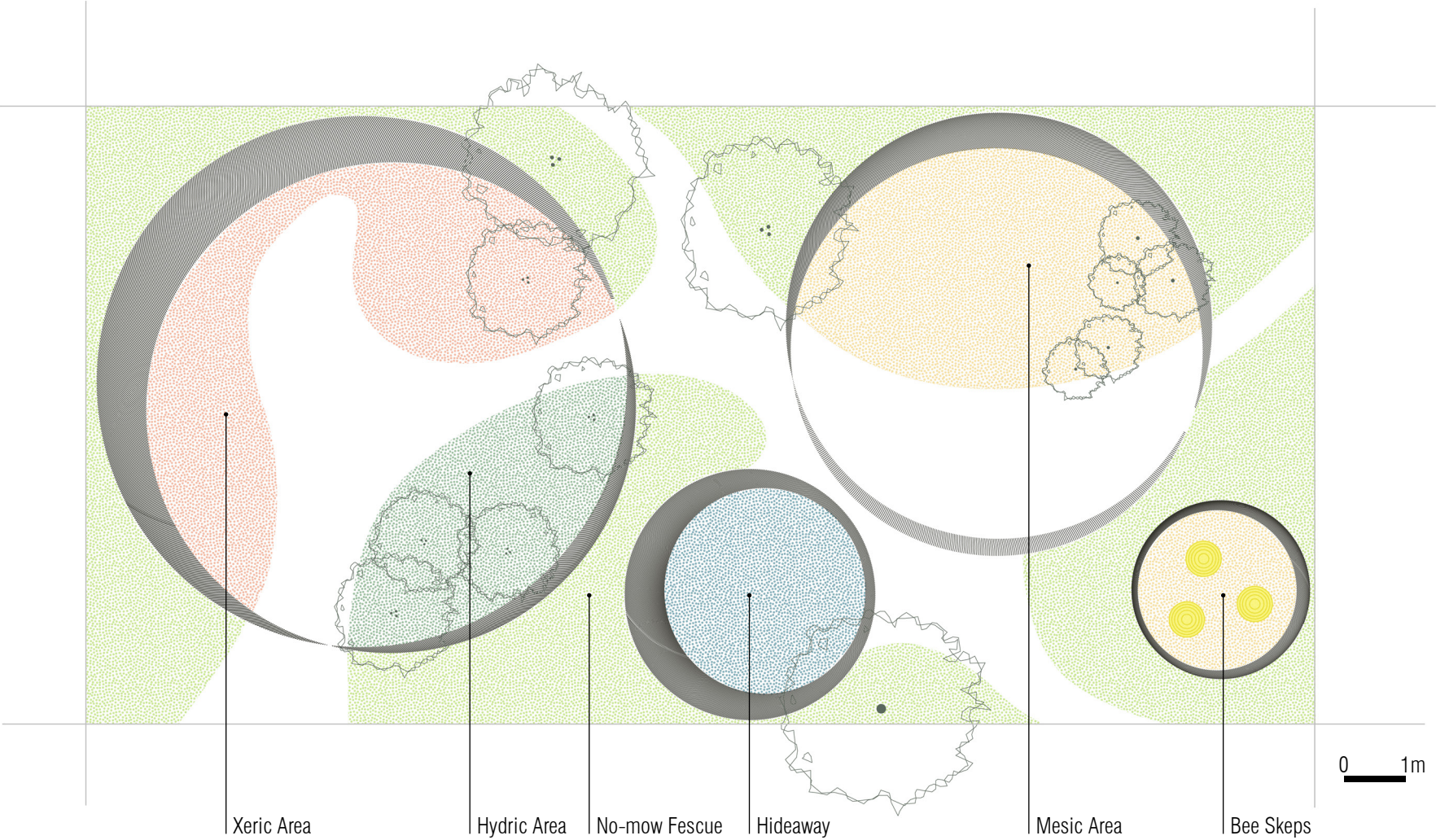
LODGINGS

New Homes for Ecology Through Cross-Species Collaboration

The traditional garden is reliant upon the extraction of one landscape’s resources – soil, plants, aggregate, water, etc. – to create the illusion of stasis in another. The traditional garden is as intractably linked with destruction as it is with creation. This may be a distinctly human foible, as there are many species that can modify the environment to better suit their needs while adding richness and diversity for other species within the ecosystem.

The North America Beaver (*Castor canadensis*) and North American Bison (*Bison bison*) are two archetypical species that are well known ecological determiners. Beavers, master of water, irrigate the landscape through the construction of intricately woven dams. Bison, in an attempt to relieve the irritation of shedding fur, wallow on their backs creating spherical microclimates of compacted soil that slows water infiltration promoting the emergence of hydrophilic plants. A diverse range of pollinators, including the Western Honey Bee (*Apis mellifera*) help spur this diversity by transferring genetic material. Finally, a wide range of seed and berry eating birds help spread these plants to other suitable environments as they are created.

This proposal creates a human landscape that creates without extraction, by working across the species divide and borrowing techniques from beaver and bison. Four circular garden lodges are created by weaving pollarded willow branches into a natural fence. Within each lodge the soil is shifted and compacted to create a tilted plan. The planting area at the top of the slope quickly sheds water allowing only those plants suited to drought to survive, and at the bottom water loving plants can flourish. Three bee skeps are placed on site to encourage the pollination of a diverse range of wildflowers. Distinct and evocative, the garden lodges create a landscape where people and the natural world can thrive.



Xeric Planting

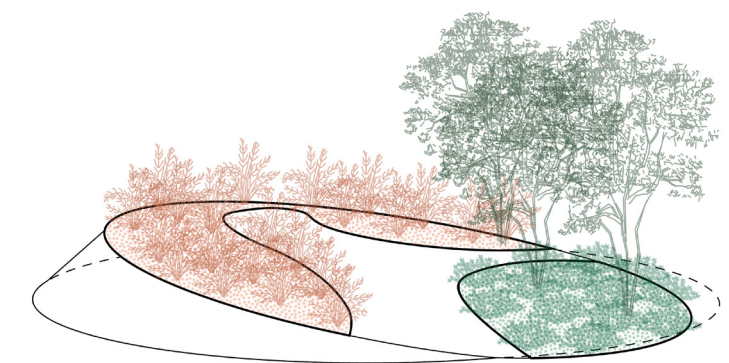
- Prairie Dropseed**
Sporobolus heterolepis
- Little Bluestem**
Schizachyrium scoparium
- Buffalo Grass**
Bouteloua dactyloides

Hydric Planting

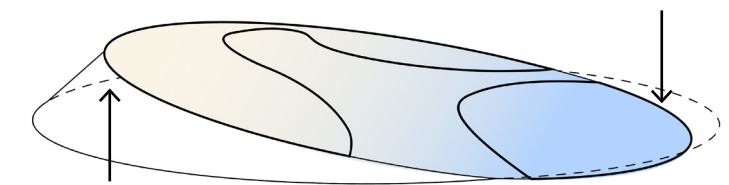
- Serviceberry**
Amelanchier canadensis
- Swamp Milkweed**
Asclepias incarnata
- Low-bush Blueberry**
Vaccinium angustifolium
- White Turtlehead**
Chelone glabra
- Jewelweed**
Impatiens capensis
- Fringed Sedge**
Carex crinata

Mesic Planting

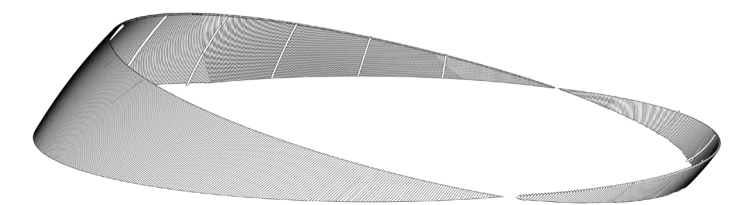
- Grey Birch**
Betulus populifolia
- Black-eyed Susan**
Rudbeckia hirta
- Partridge pea**
Chamaecrista fasciculata
- Lanced leaf coreopsis**
Coreopsis lanceolata
- Purple Coneflower**
Echinacea purpurea
- Rattlesnake master**
Eryngium yuccifolium



Ecology



Wallow



Lodge

