

FOCUS *AMOENUS*

a hortus conclusus for lunar delights and strawberry thoughts.



June 21, the summer solstice, falls on the Strawberry Moon. Our garden celebrates the Moon and its influence on Earthly life—an enclosed elliptical field complete intimacy, natural processes



Like the house described in Mark Danielewski's House of Leaves, this garden has unexpected spatial characteristics—it is larger on the inside than it is on the outside.



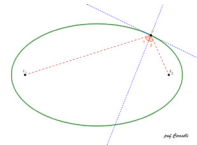
In the tradition of the Hortus Conclusus, the garden is seemingly inaccessible with its invitation of thought.



of the Hortus Conclusus, the small and hidden outside but infinite inside, a physically fourth landscape in contrast



Mirrored panels expand interior space around two rocks located at the foci of the ellipse, while time passes constructs of minutes or sunsets, and full moons strings of the garden.



by without human seconds. Sunrises, pull on the puppet

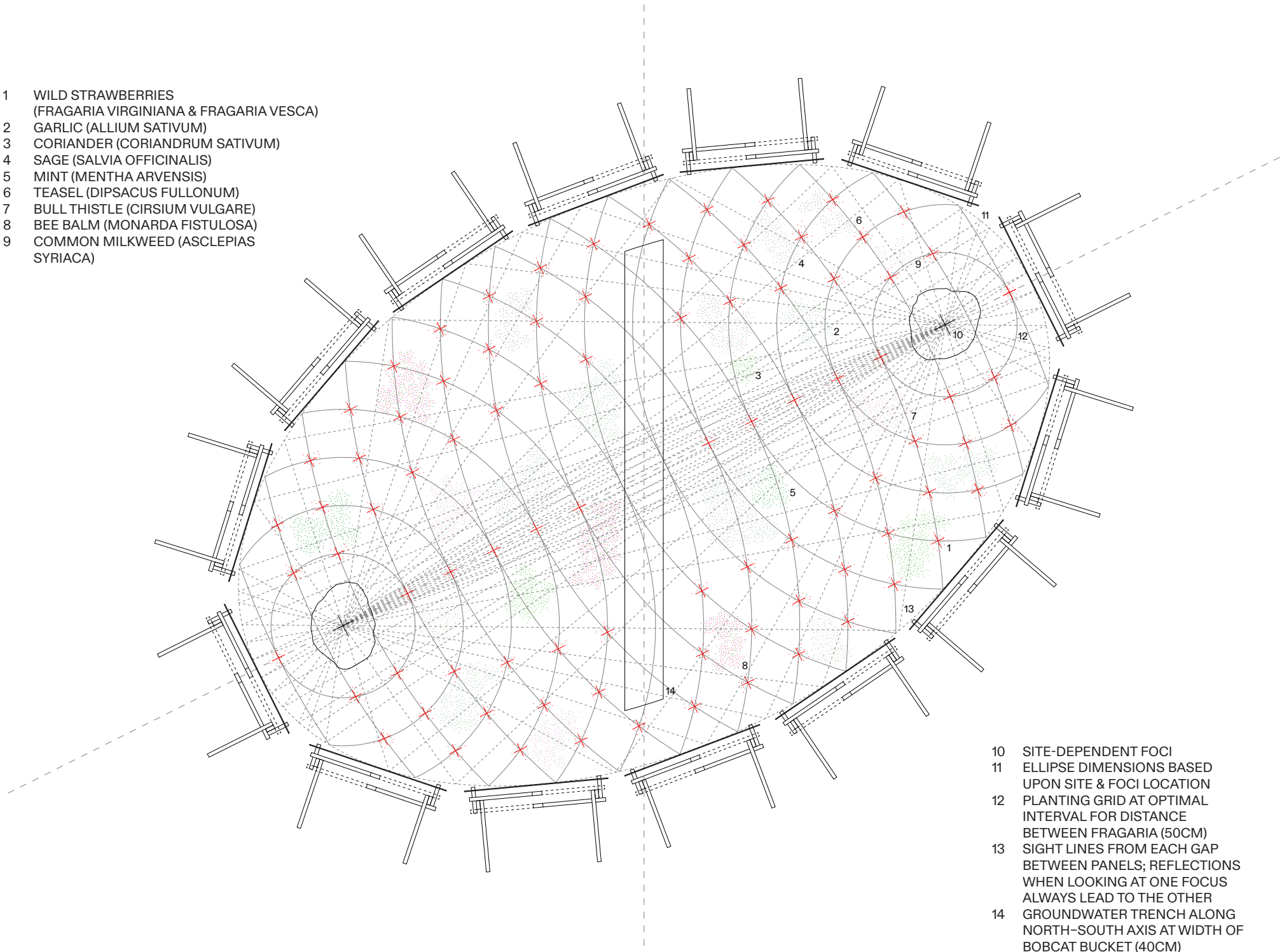


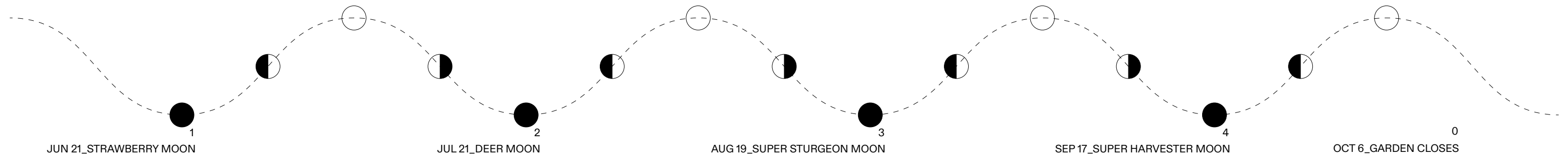
Native wild strawberries of two species evolve from a rigid planting layout to an entropic order untouched by human maintenance, splitting according to their

properties or mixing by sympathy and with the help of companion plants and bugs, adding biodiversity to the garden.

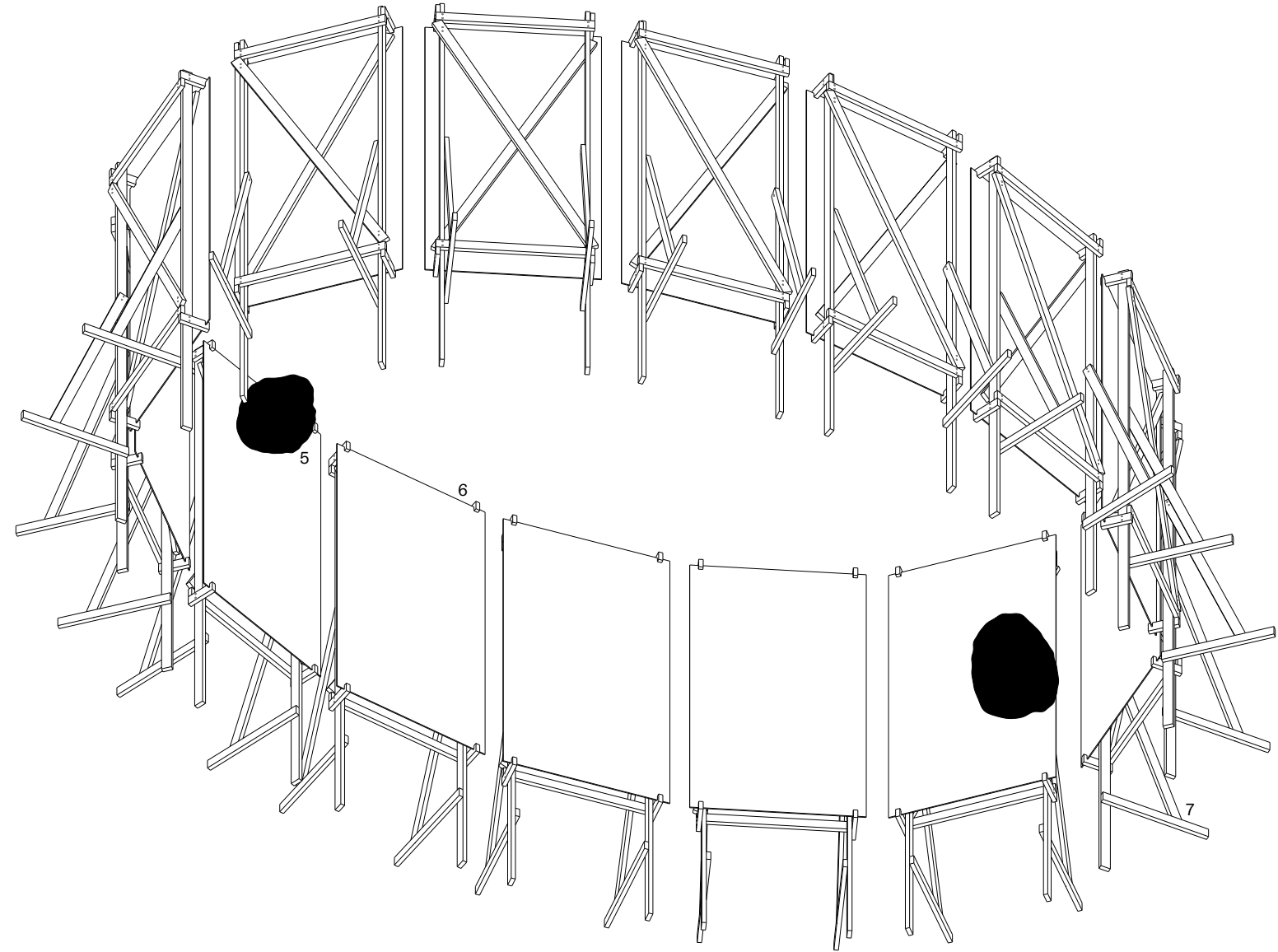


- 1 WILD STRAWBERRIES (FRAGARIA VIRGINIANA & FRAGARIA VESCA)
- 2 GARLIC (ALLIUM SATIVUM)
- 3 CORIANDER (CORIANDRUM SATIVUM)
- 4 SAGE (SALVIA OFFICINALIS)
- 5 MINT (MENTHA ARVENSIS)
- 6 TEASEL (DIPSACUS FULLONUM)
- 7 BULL THISTLE (CIRSIUM VULGARE)
- 8 BEE BALM (MONARDA FISTULOSA)
- 9 COMMON MILKWEED (ASCLEPIAS SYRIACA)





- 5 ROCKS SOURCED FROM DECONSTRUCTED GARDENS
- 6 MIRROR-POLISHED STANDARD (150X290CM) STAINLESS-STEEL PANELS TO BE RECYCLED (SOLD) UPON DECONSTRUCTION
- 7 STANDARD 2X4 WOOD (6 FOR EACH PANEL) SUPPORTS TO BE RECYCLED UPON DECONSTRUCTION



OUTSIDE VIEW



INSIDE VIEW

