

Acqua alta

Acqua alta is a reflexion on the festival theme ‘ecology of possibility’ with a highlight on the urgency of ecological projects. Since time might implement a progressive shrinking of these possibilities.

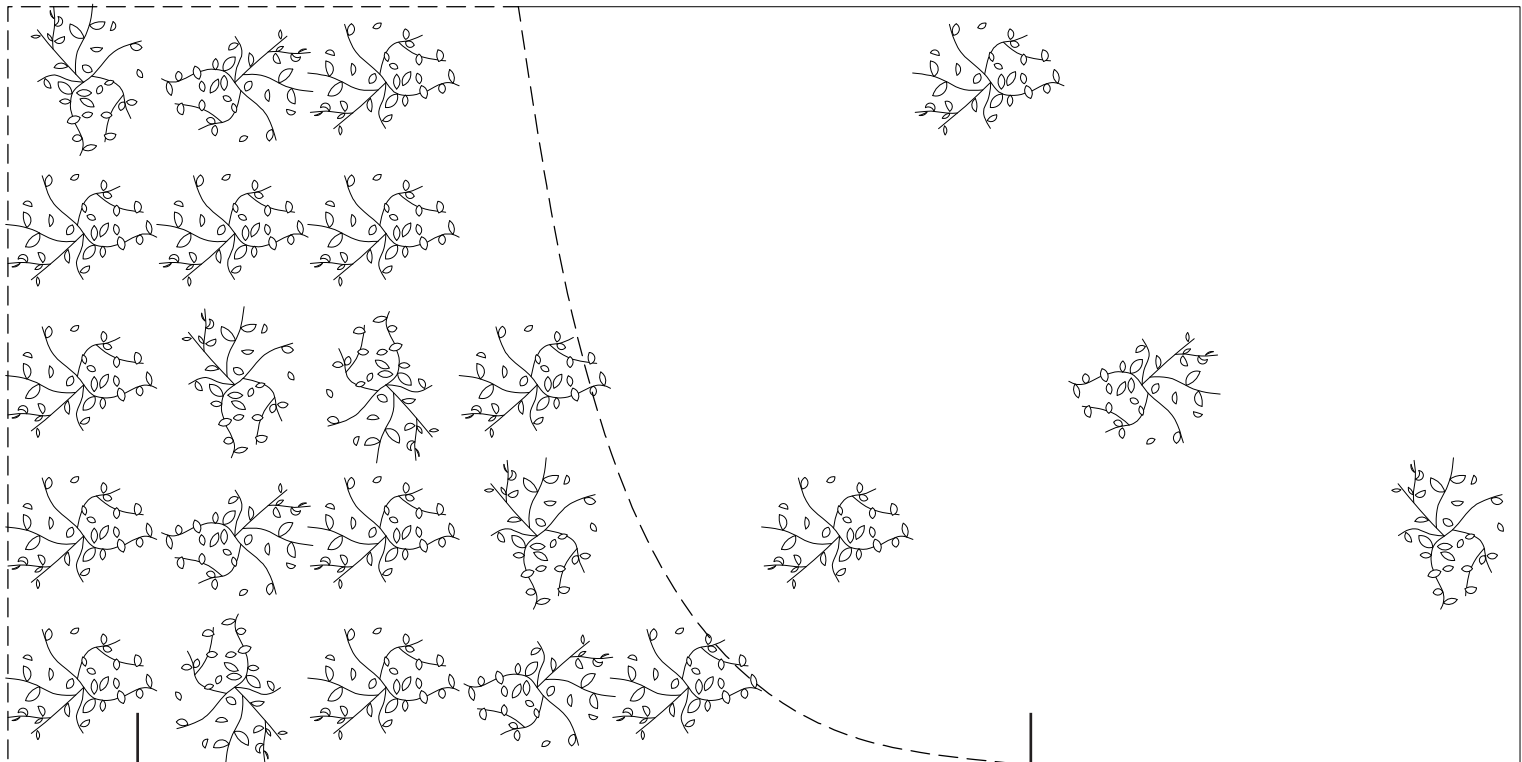
The garden is divided in two parts, a birch forest with a strict layout referring to a classical pleasure garden - or a reforestation project to give a more recent example – and a part which is submerged by water showcasing isolated trees. The two parts are set in stark contrast to each other, visibly and also in terms of accessibility.

While the ‘dry’ part might invite visitors to stroll around in the forest like parcel and even spread their picnic blanket in the shade of the birch trees to contemplate the view on the water plan and the beautiful reflections of the trees in the water in a first time, the garden also invites us to reflect on the consequences of rising water levels hiding within such a scenery.

Suggested plants

Trees
Betula alleghaniensis
Betula papyrifera
Betula populifolia

Forest ground
Mix of local grasses and forest plants to be chosen in consultation with the festival building team



1:100

Contemplating garden (40%)
19 birch trees planted in a grid of 2m
forest floor surface with local plants
grass for walking and sitting

Water surface (60%)
depth 0-40cm
pond liner covered with dark stone to
increase mirror and depth effect
4 birch trees planted underneath liner with
ring holes for stem and air inlet



