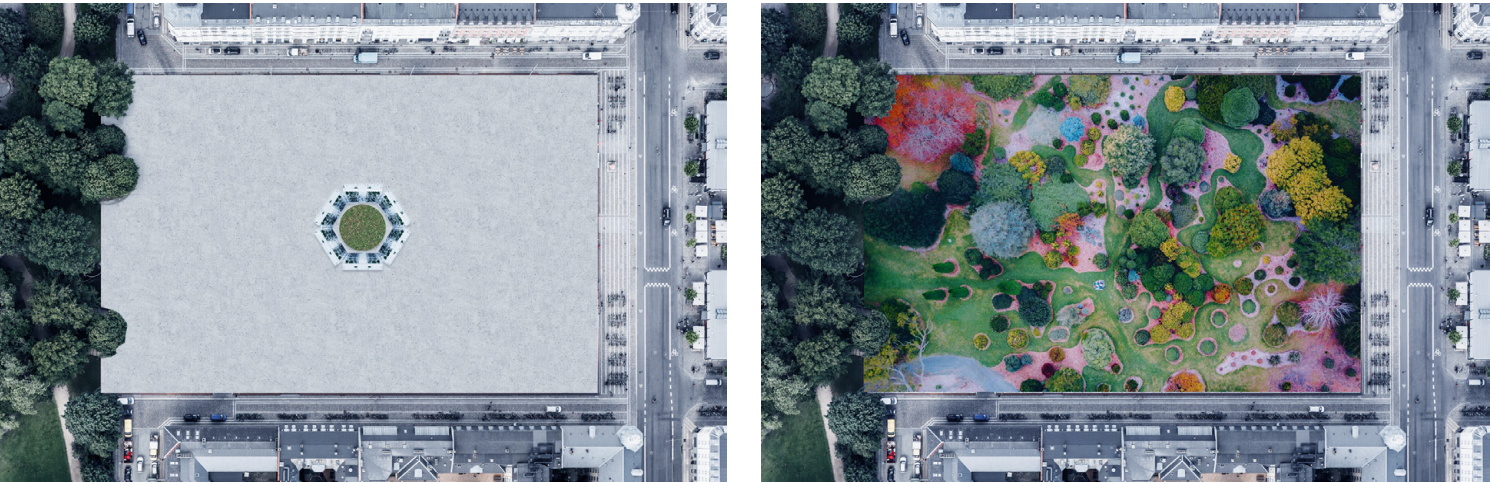
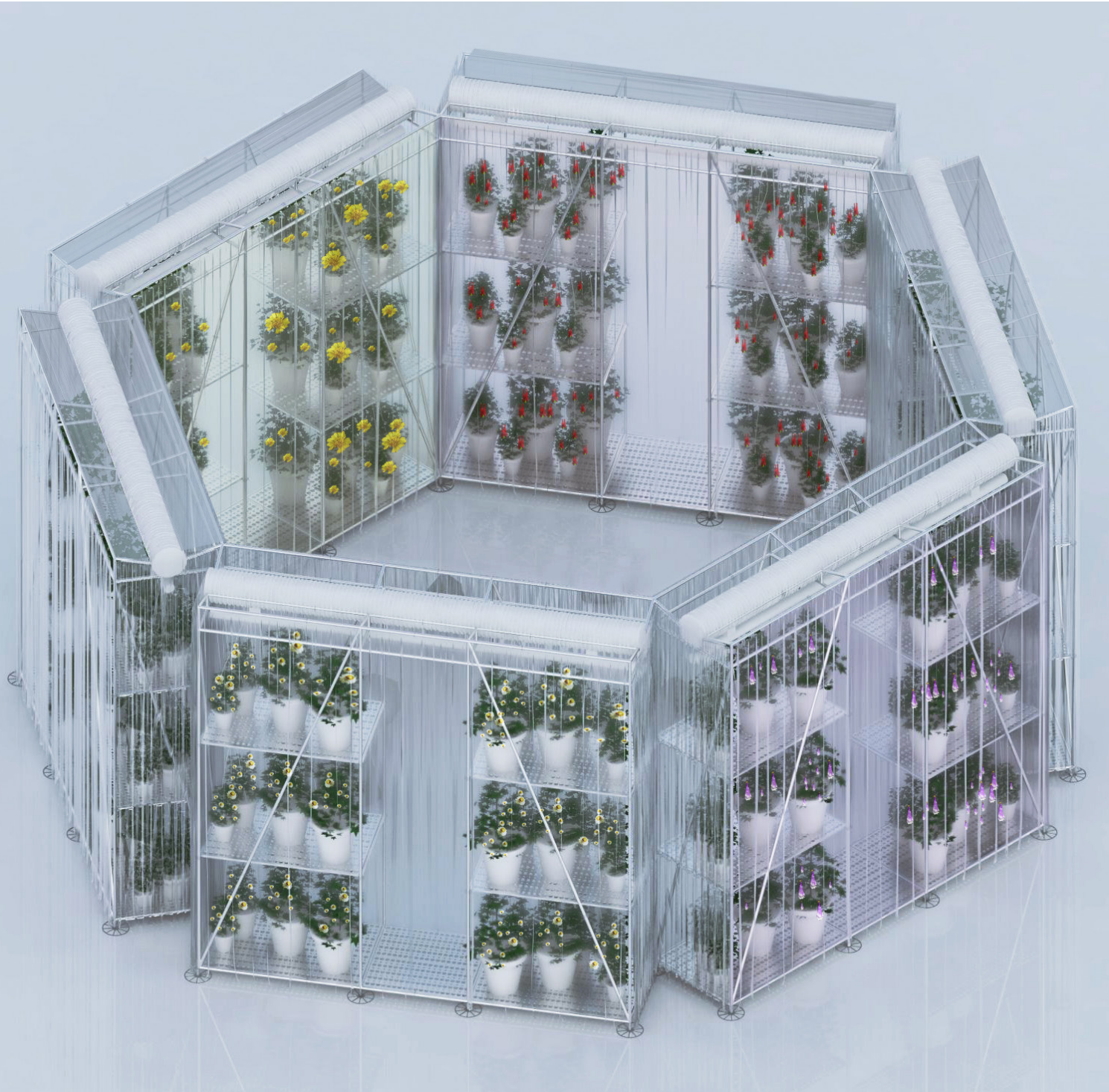


GARDEN MINING “the first module”

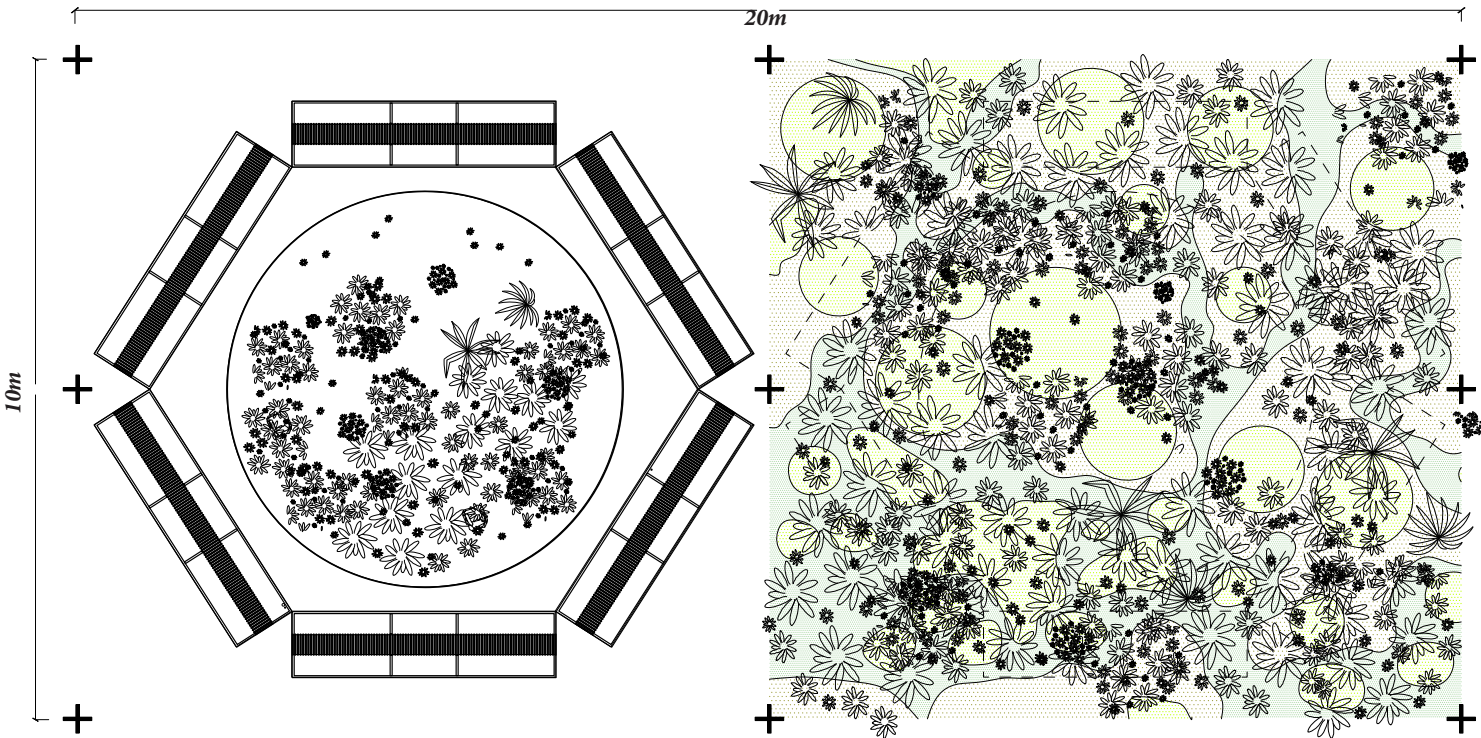


•Reclaiming garden from urban desert - Aerial view Day 1 and Day xx

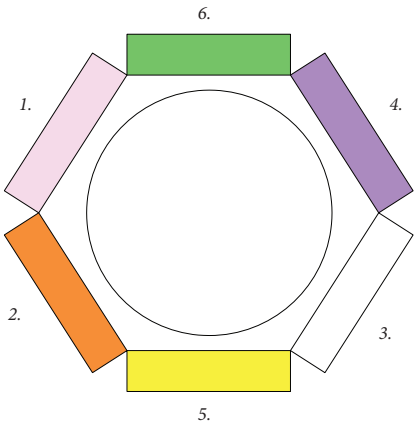


•The first module

•Proposal for the Jardin de Metis: Half plot as future conversion and Half in progress.

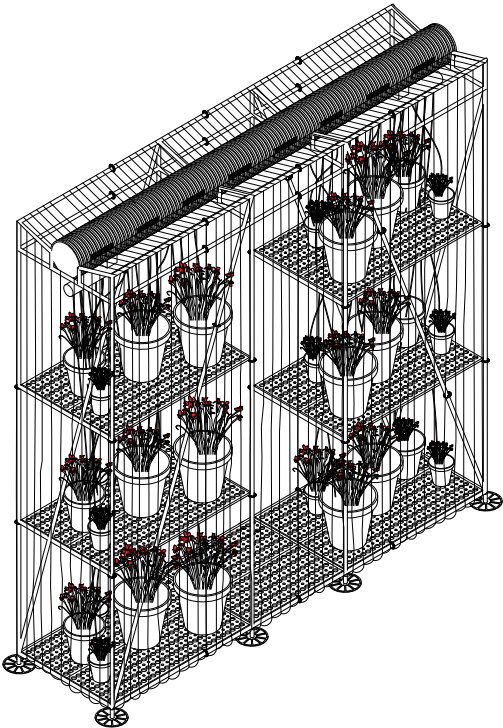


•Multicolored 6 petals flower



- 1. Purple Coneflower (Purple 60-90cm, Summer-Fall)
- 2. Wood Lily (Red 30-90cm, 6 petal, Mid-Last Summer)
- 3. Bloodroot (White 20-40cm, 8 petal, Apl-May)
- 4. Hairy beard-tongue (violet 30-45cm, May-June )
- 5. Seaside goldenrod (yellow 30cm, July-Sep)
- 6. Slender mountain-mint (grass low)

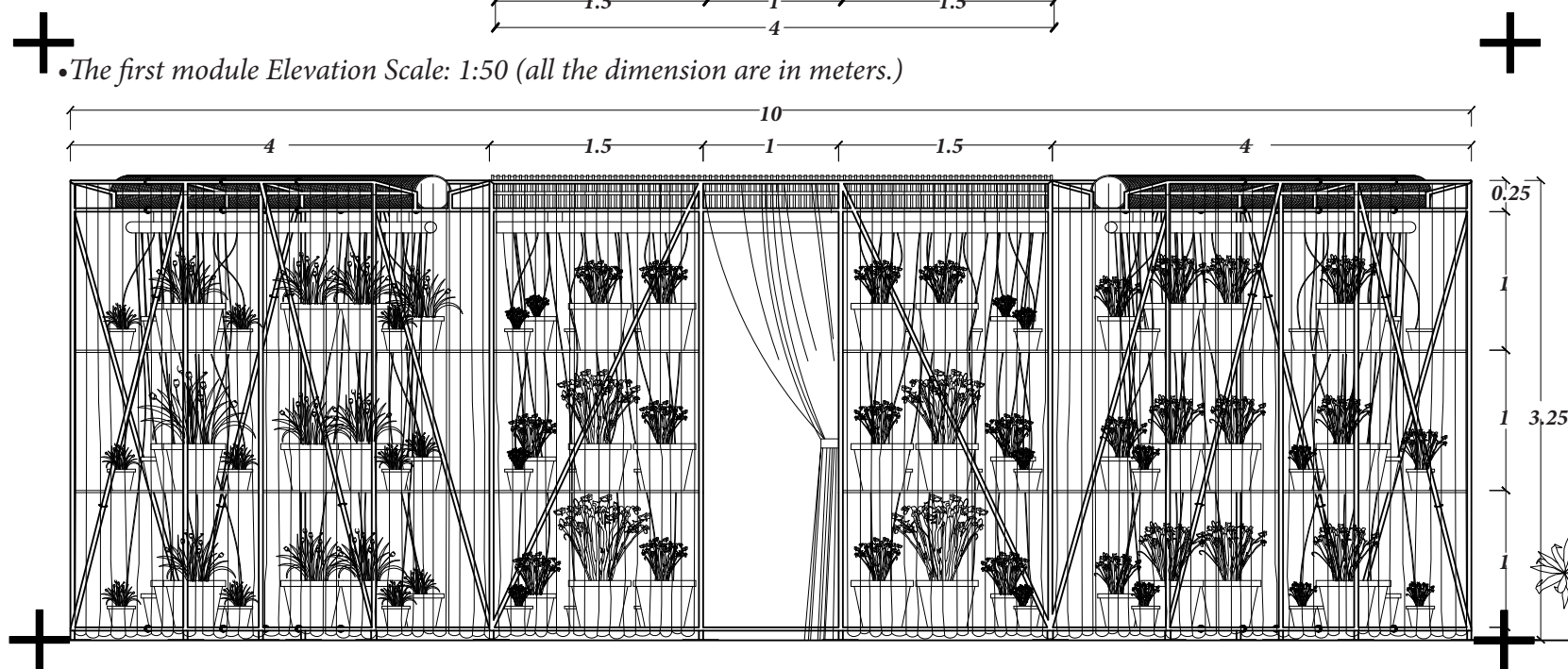
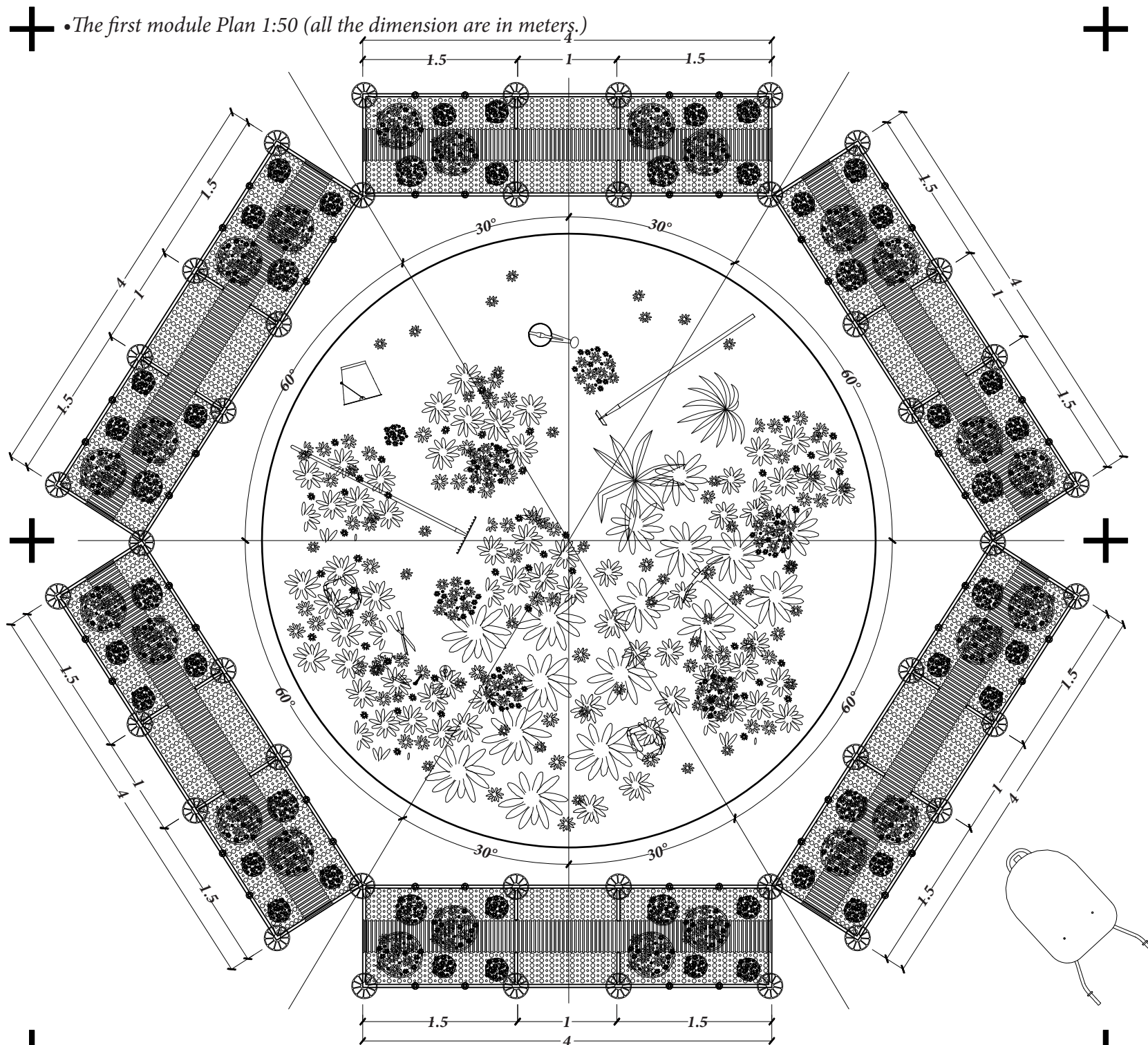
•Axonometric view of one “Petal”



•Items list for one “Petal”

- a. Pipe as a water tank.
- b. 325cm x 8u.
- c. 150cm x 8u.
- d. 355cm x 4u.
- e. 400cm x 6u.
- f. 100cm x 16u.
- g. 40cm x 8u.
- h. Plastic sheet 10 ml.
- i. Water pipe.
- j. Steel platform. 100cm
- k. Steel platform. 150cm
- l. Pot small d: 20cm
- m. Pot mid d: 30cm
- n. Pot mid d: 40cm
- o. Scaffolding support
- p. Scaffolding joint
- q. Water Timer
- r. Steel grid filter





## GARDEN MINING “the first module”

### •Description

The basis of architecture is finding simple answers to complex questions.

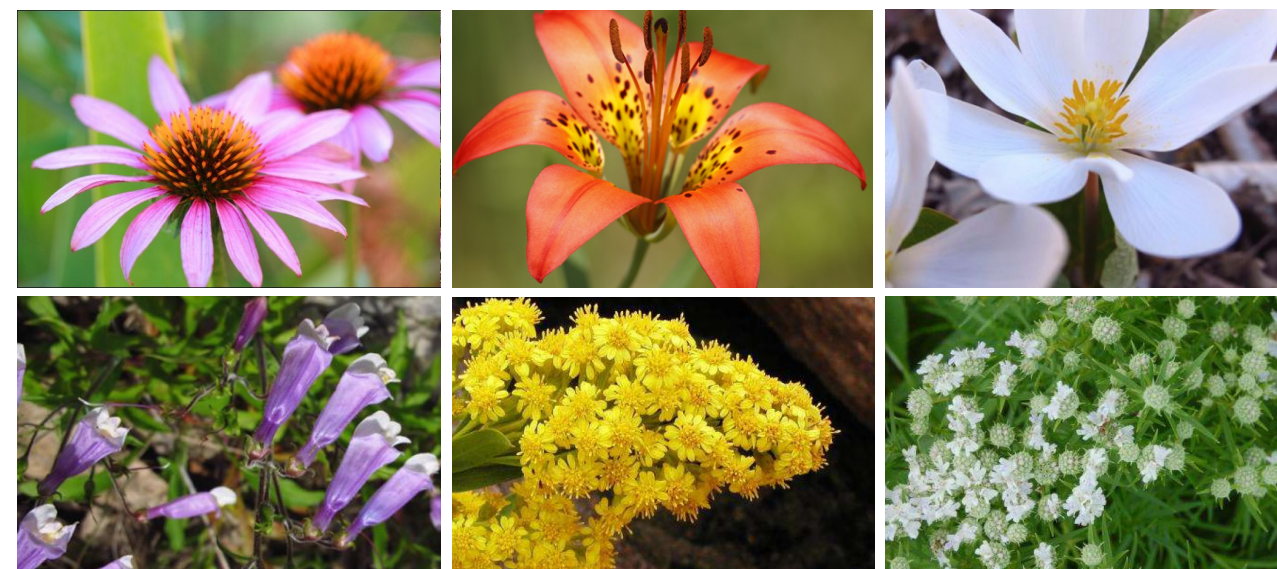
In this case we should not limit to design of a garden but to how it can help reverse the trend of an increasingly urbanized future. It is therefore necessary to think of a device that is itself capable of creating spaces in which flowers can grow.

A machine capable of being easily moved and reassembled wherever needed.

For the exhibition of the Giardin de Metis the first prototype is presented which will help in the creation of the exhibition leaving the possibility for visitors to install the flowers grown within the walls of the pavillon. New types can be replanted in the empty pots depending on the season, keeping the exhibition alive throughout the year and contributing to production for future editions too.

The visitor will be able to contemplate the entire growth process and, having crossed the membrane, once inside, he will feel like he is in a laboratory free to experiment immersed in different types of plants and to collaborate in the creation of the garden and a new future.

### •Flower selection



- 1. Purple Coneflower (Purple 60-90cm, Summer-Fall)
- 2. Wood Lily (Red 30-90cm, 6 petal, Mid-Last Summer)
- 3. Bloodroot(White 20-40cm, 8 petal, Apl-May)
- 4. Hairy beard-tongue (violet 30-45cm, May-June )
- 5. Seaside goldenrod(yellow 30cm, July-Sep)
- 6. Slender mountain-mint(grass low)

