



The White Garden

This is a courtyard (18.6m x 8.8m x 2.5m) enclosed by four oblique walls. The outside of the yard is black, while everything inside, including walls, gravel paving and plants, is covered by white paint.

The idea was inspired by a scene we found in our city—during a construction process, the ferns were covered by white paint and growing new leaves. Through a "cruel" and "uncomfortable" way, this project aims to convey our thoughts about that scene—no matter how strong the marks people leave, they are only momentary to the ecology (or the universe).

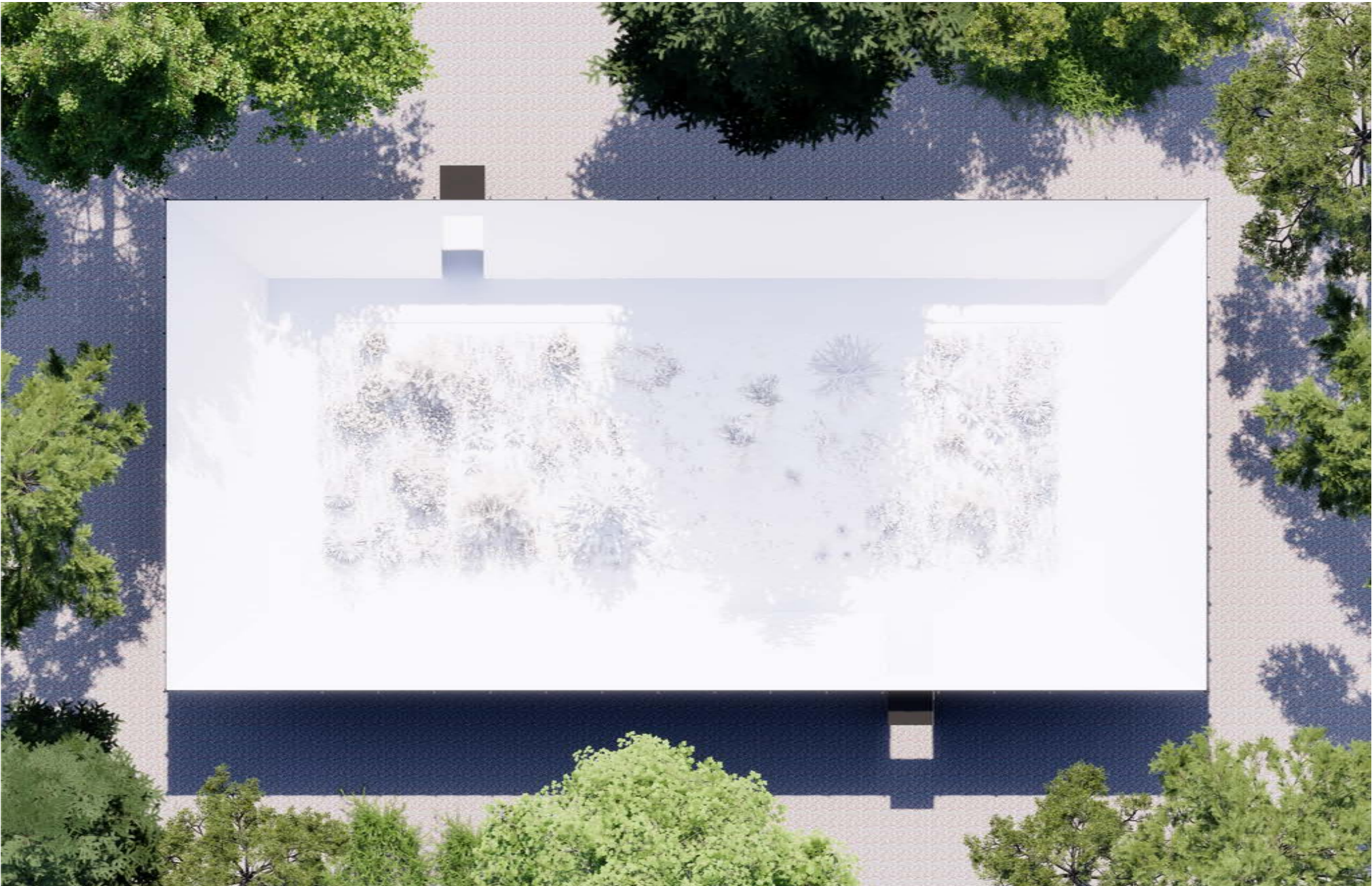
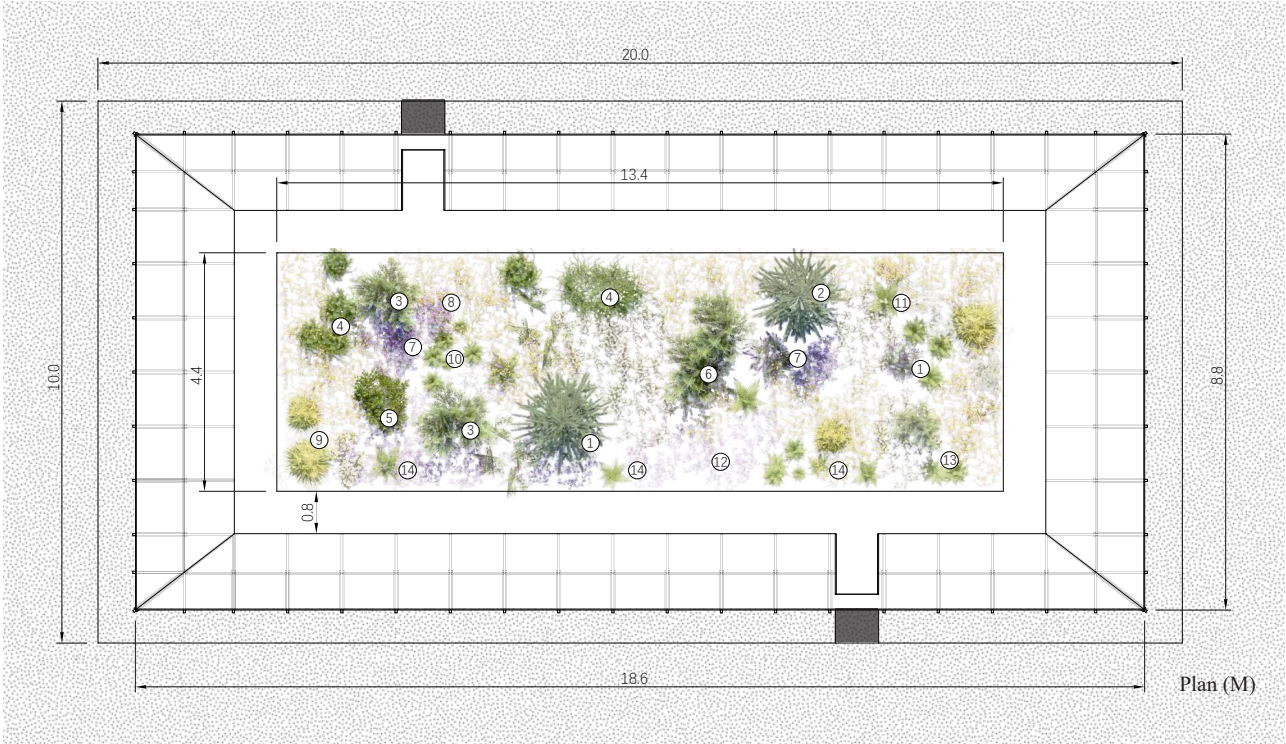
TWG provides a changing landscape. Over time, new leaves will gradually emerge, and moss will cover the wall, turning the white space green. Three cameras in the garden will record the process. After the festival, visitors can bring white flowerpots to adopt plants from the garden.



List of Suggested Plants & Planting Plan



The habitat garden in this project consists of perennial herbs, shrubs and small conifers, including lots of flowering plants, such as lawn daisy, common yarrows, royal candles, Japanese iris, kangaroo paws and spider lily.

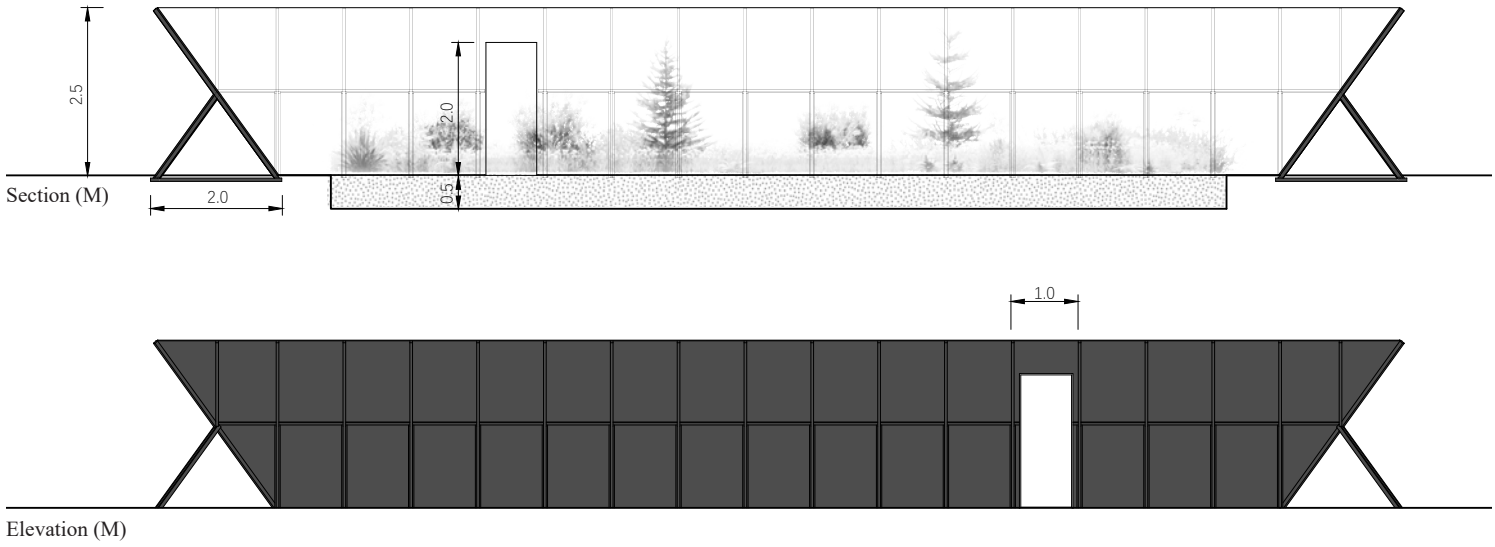




Material & Structure

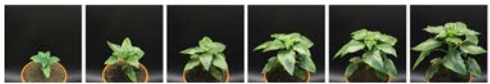
The main structure of the garden is composed of wood multi-layer boards and wood frames, enclosing a yard 18.6 meters long, 8.8 meters wide and 2.5 meters high.

The construction will start with the central habitat garden and end with the walls. And the painting will be finished after the construction. Inside of the yard will be paved with white gravel, and the plants and walls will be sprayed with white paint (bio-based eco-friendly), while the outside will be dark gray.



White Paints as Marks

The "white paint" idea was inspired by a scene we found in our city—during a construction process, the ferns were covered by white paint and growing new leaves.



We spray the plants in the vegetative stage (after the seedling) with white bio-based eco-friendly paint. The plants will keep growing and "break" the white space.



Through this "cruel" and "uncomfortable" way, this project aims to convey our thoughts about that scene—no matter how strong the marks people leave, they are only momentary to the ecology (or the universe).



Changable Garden

Celebrating the wild beauty of nature, this project challenges the garden's aesthetic and provides a changing landscape. Over time, new leaves and flowers will gradually emerge. And moss will cover the wall, turning the white space green. The diagram below shows the expected process. Three cameras in the garden will record the change. There will be screens at the entrances to show the photos to visitors.

After the festival, visitors can bring white flowerpots to adopt plants from the garden. The wood panels with moss will also be made into souvenirs.



Top View (1 Day)



Top View (2 Weeks)



Top View (1 Month)



Top View (2 Months)



Close-up View (1 Day)



Close-up View (2 Weeks)



Close-up View (1 Month)



Close-up View (2 Months)