

The Future Gardens of the Past

The idea of a future garden lies in the return to the pristine landscapes of the past and the interconnection between people and nature. The project explores emotional and ecological benefits people obtain in their interaction with nature, while breaking the current notion of nature as a controlled element. Here a fence is no longer a separation of space, but an active element which creates habitats, food and new healthy soils. This leads us to perceiving gardens as pockets within an ecologically rich landscape, benefitting humans, wildlife and nature. The garden consists of three spaces: *Forest Bath*, *Soundscape* and *Social Sensing*, each giving a visitor a different experience.

Forest Bath focuses on relaxation and the impact nature has on our mental health through a combination of smells and textures.

Soundscape gives an opportunity to interact with water as an element and enjoy the sounds of nature.

Social Sensing talks to our senses through a varied ecological landscape. Mist sprinklers mimic the process of natural evaporation and cover the garden room in mist, creating a perfect atmosphere for social gatherings.

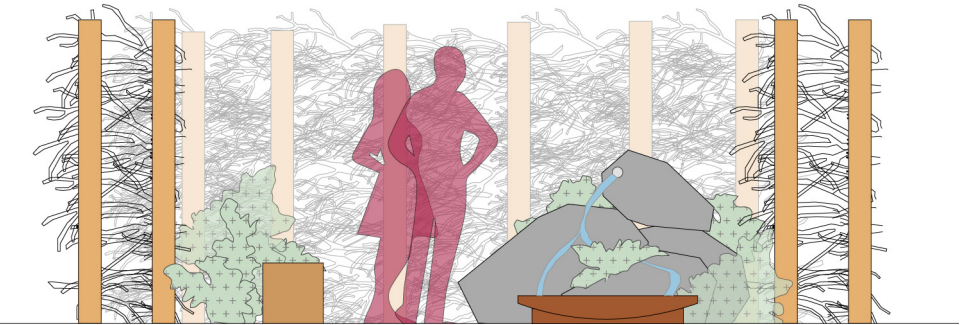
Plantlist:

Each room is defined by circular Brush fence, which is created by cutoff leaves and branches from the surrounding area. Each room focus on different experiences, with an individual plantingscheme.

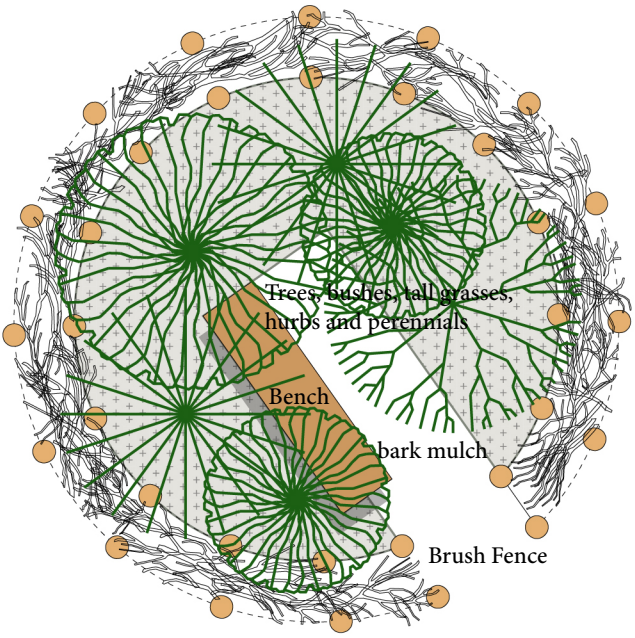
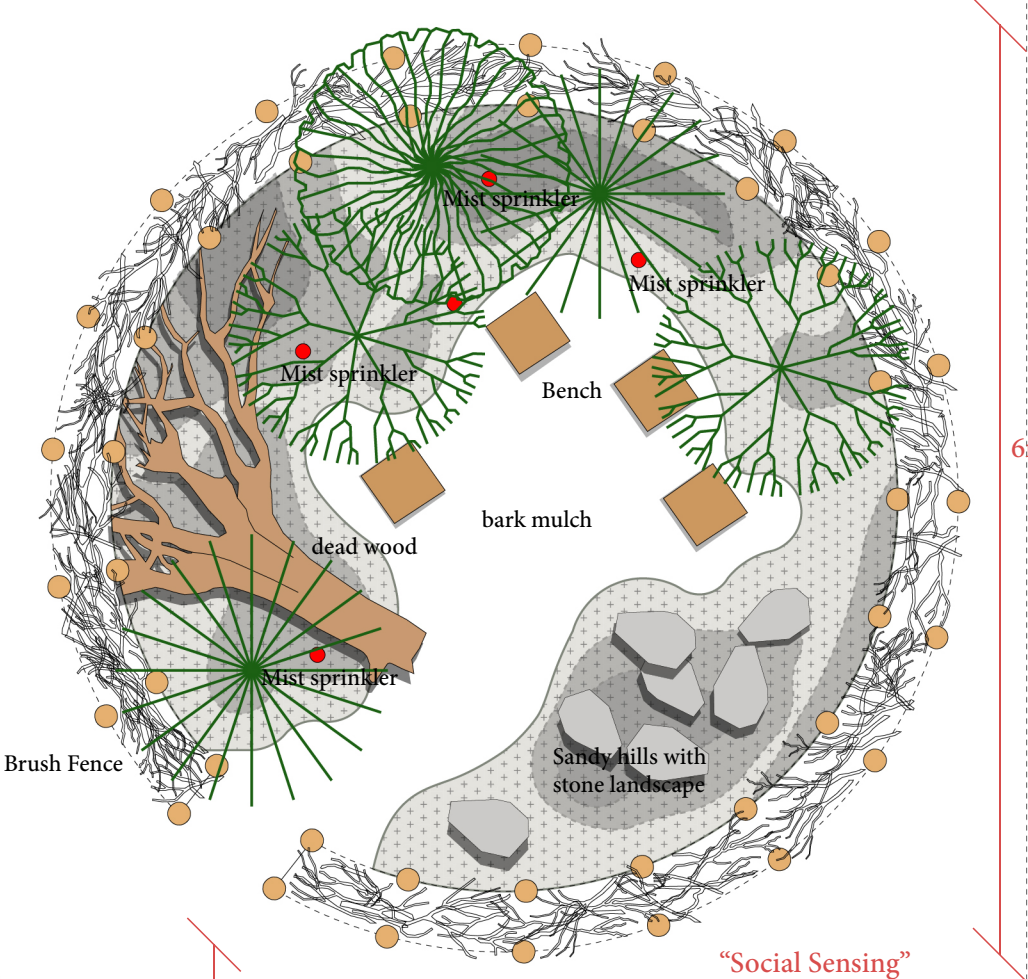
The Forest Bath focus on smells and textures, with a mixture of Trees, perennials, hurbs and tall grasses. A combination of trees could be: Paper Birch, Black Cottonwood, Eastern Redbud, Tulip Tree. Perennials: Wild bergamot, Columbine, Common Yarrow , Coral Bells etc. Bushes: Common Elderberry, Wintergreen, High-Bush Cranberry, Nannyberry.

The "Soundscape" room focus on water, stones and smaller plants and bushes. A combination could focus on a sandy stoney landscape with bushes like: Labrador Tea, Bearberry, Dwarf Birch with Perennials such as; Arctic Avens, Alpine Saxifrage, Rock Jasmine, Moss Campion and Artic Willow.

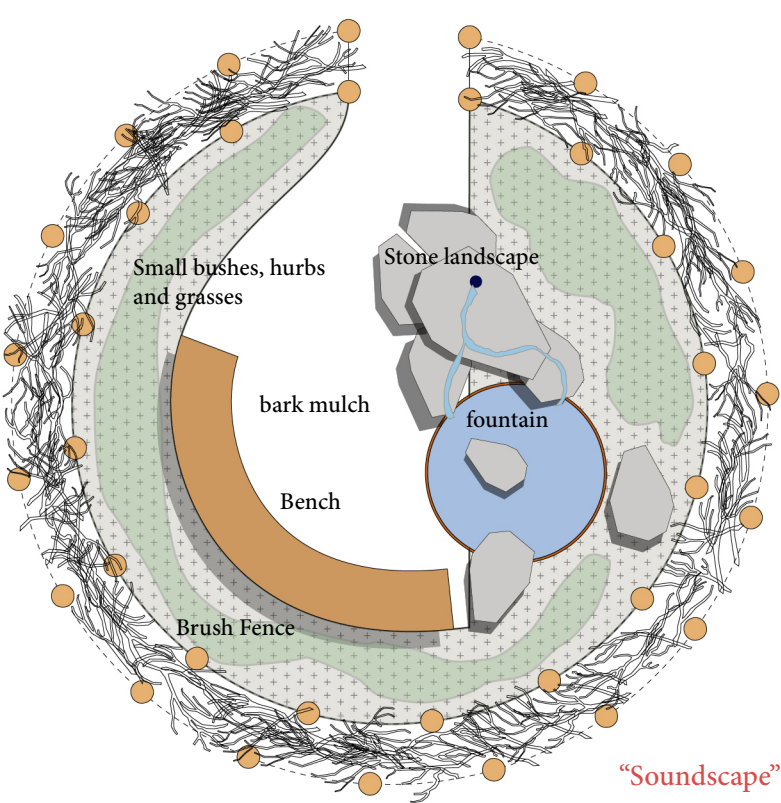
The third room "Social Sensing" is a mixture of various landscapes, with dead-wood, sandy stone landscape and hilly/ semi wet areas. Here the combination should focuss on flowering plants, grasses, ferns and perennials adapted to each soil type.



Section 1.50: "Forest Bath"



"Forest Bath"



"Soundscape"



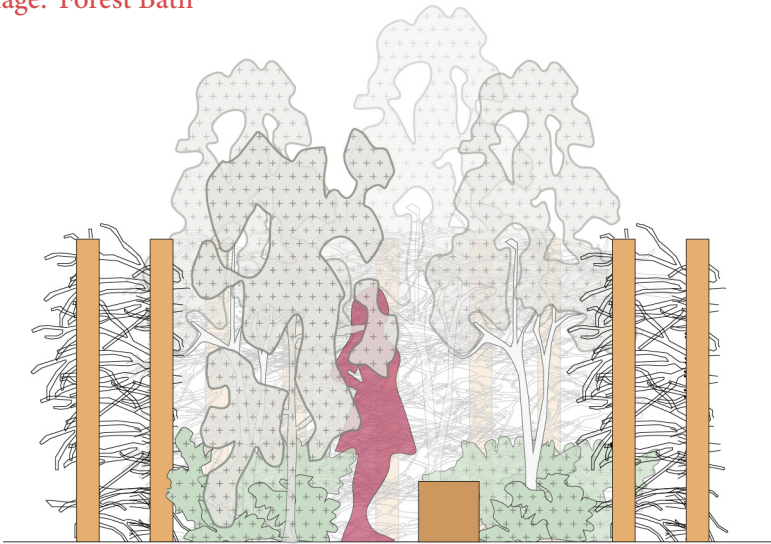
Collage: "Social Sensing"



Collage: "Forest Bath"



Collage: "Soundscape"



Section 1.50: "Forest Bath"



Section 1.50: "Social Sensing"