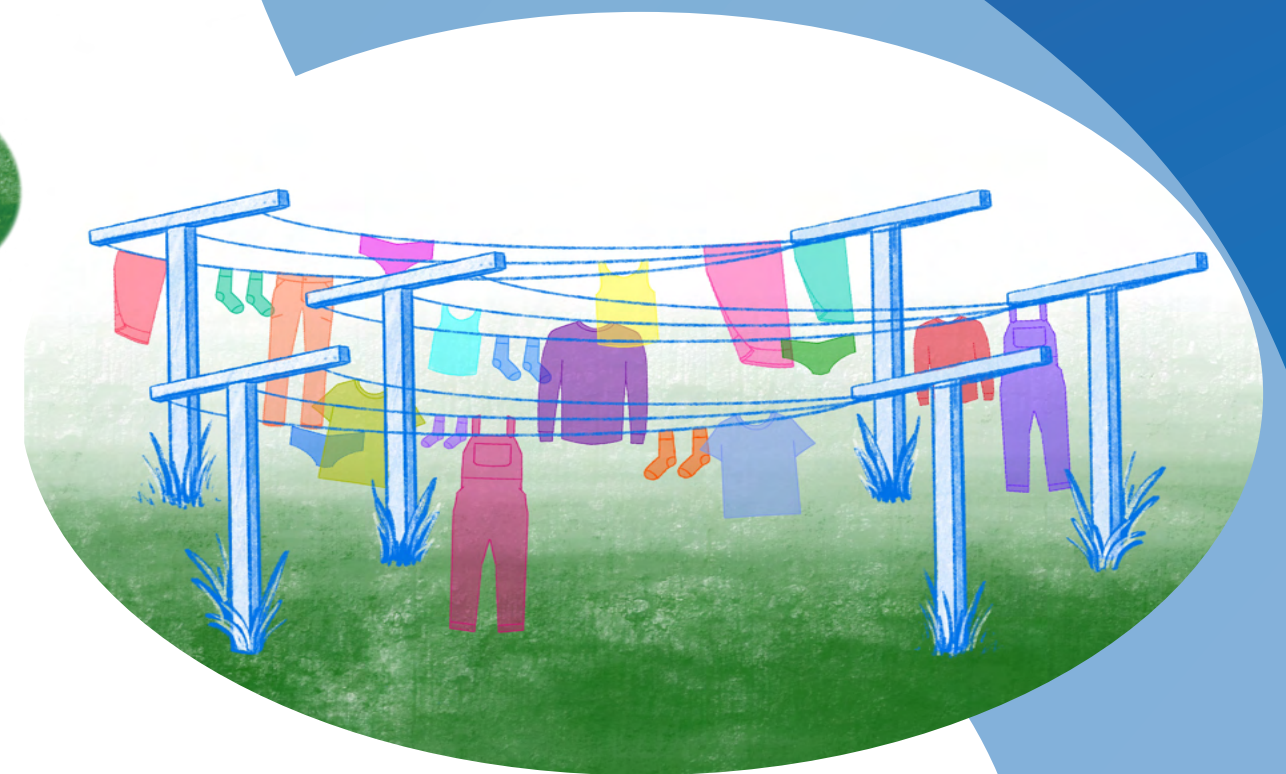
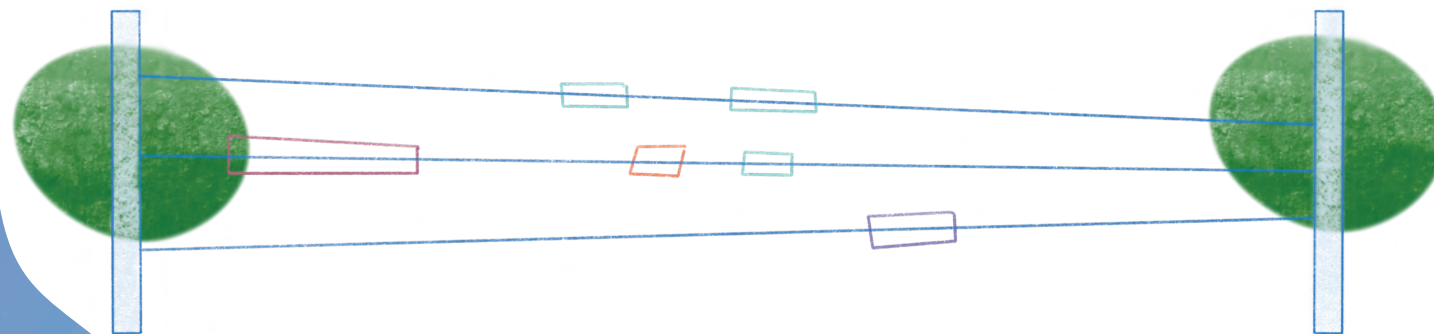
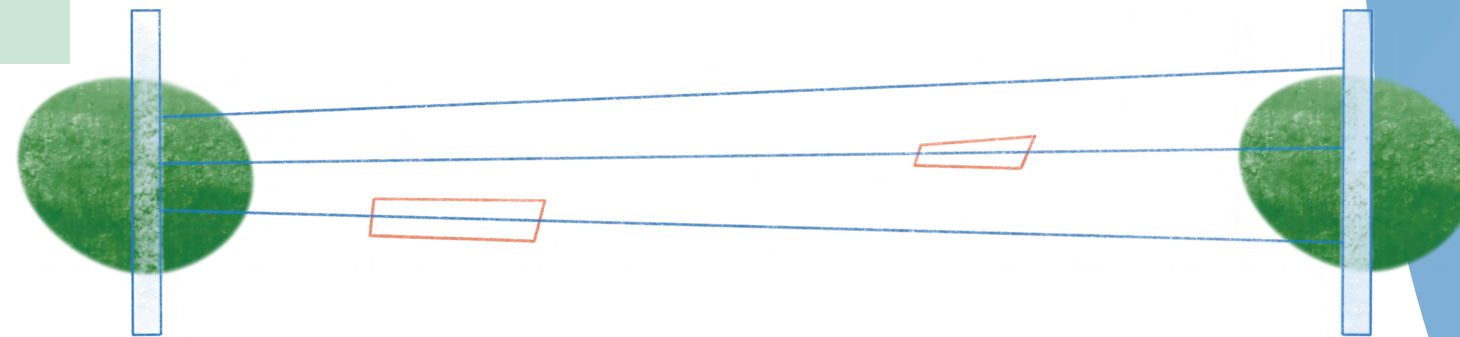
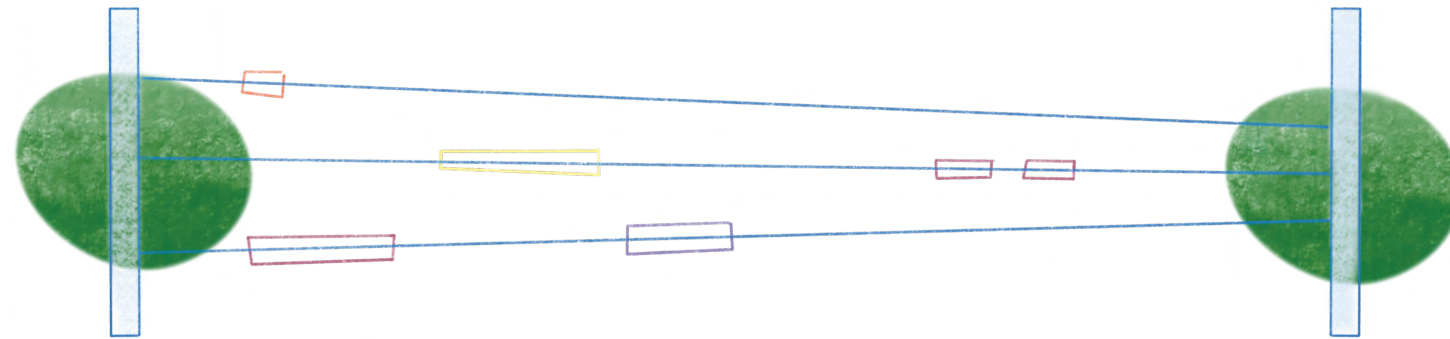


Passed Down the Clothesline

The proposed work, 'Passed Down the Clothesline' presents Roots relating to the connections between family, homemaking and traditional environmentally conscious practices passed down from generation to generation. Both artists have strong connections to family and nature through the practice of caring for clothing on a clothesline. We recall our mothers and grandmothers hanging articles out to dry in the sun and the wind; something perceived as a chore ending up as a cherished memory. Our team visualises these concepts into the construction of a series of clothes lines, highlighting the value in their simplicity and the importance of the act. Our structures would be approximately 50' in length and include plexi-glass garment silhouettes, in vibrant colours, that can be shifted along the line manually by guests. As the garments move back and forth, Visitors can walk through the rows seeing how the light shines through and blends the colourful layers. Each garment on the line illustrates members of the family; a parent's work overalls, a brother's graphic tee, a collective of mis-matched socks, strung together as a family portrait.

50' clotheslines
5-6' in between





***low maintenance plants and grasses would be best suited for the project**