

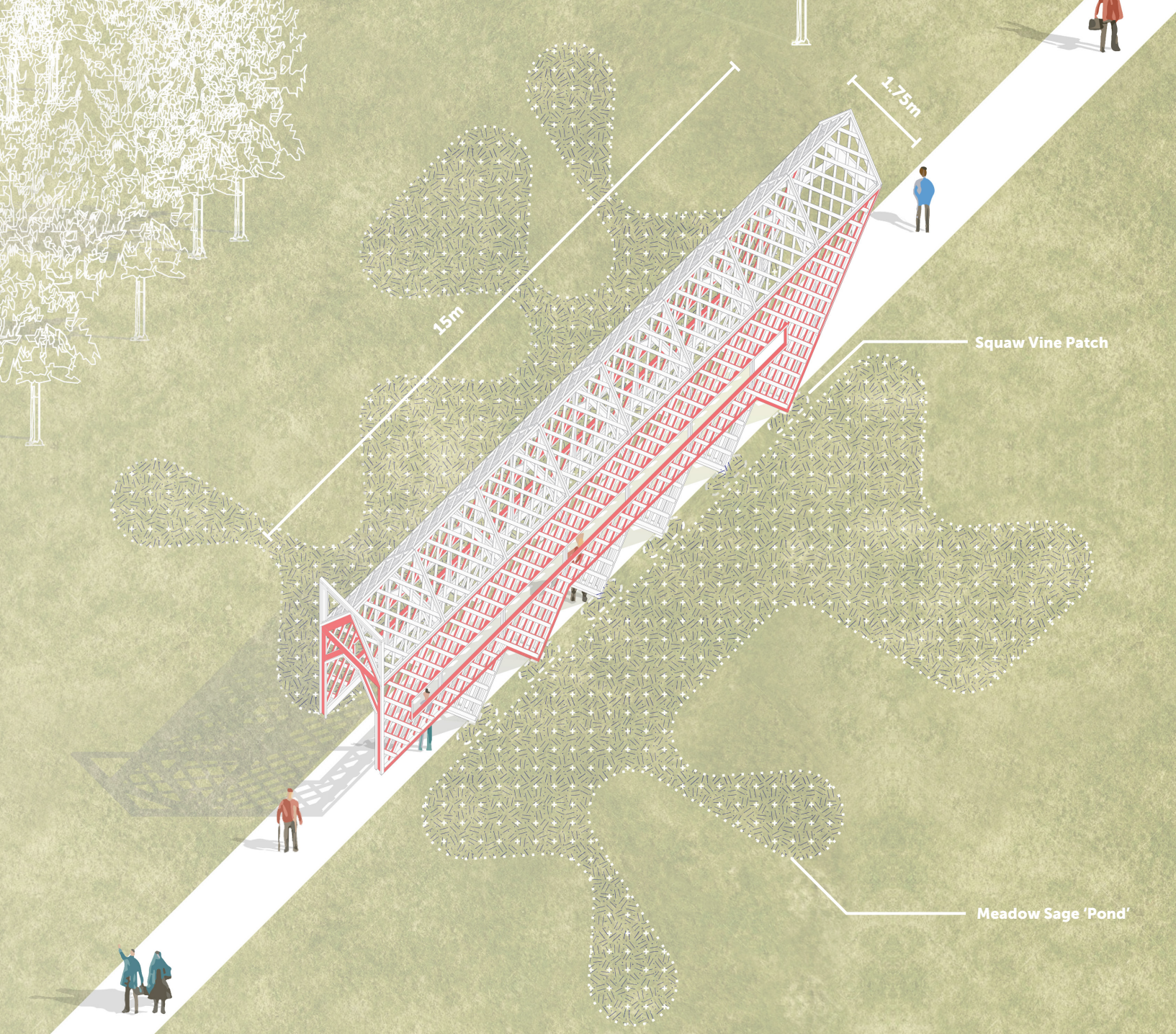
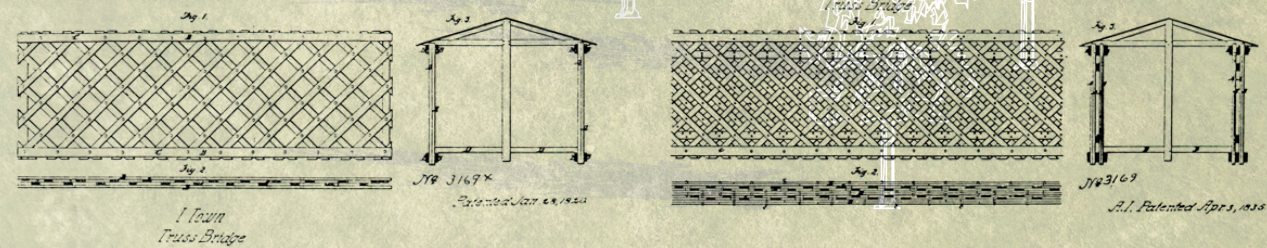
LE PONT DÉRACINÉ

One day a Gaspésian covered bridge decided to go for a walk. Once rooted on a woodland stream nearby the St. Lawrence River, the bridge now stands proudly in the Jardins de Metis. After many years, the Le Pont Déraciné stands strong as a steward for the gardens, passing through a small patch of native meadow sage. The bridge's width, two meters, creates a passage for solitary travelers, providing each visitor with a framed view to the gardens beyond, and through its squaw vine covered trellis. When approached from the oblique, the bridge's frame appears as iridescent red to recall the regional bridges of Quebec.

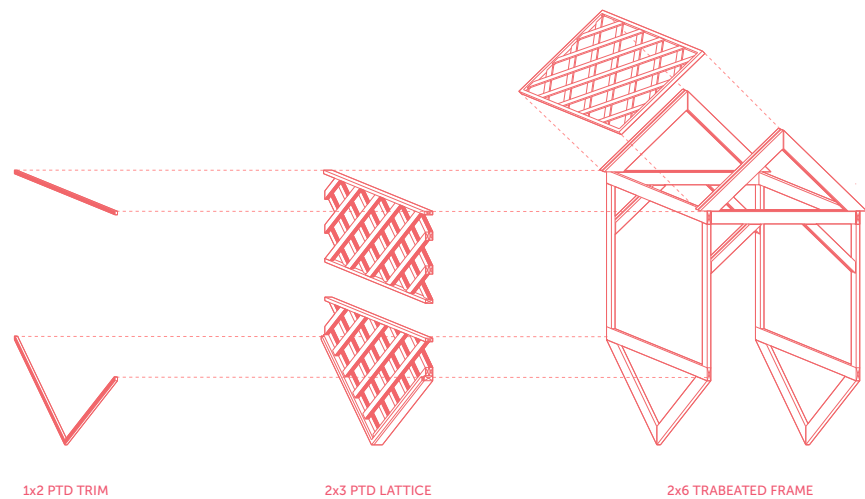
The exposed lattice truss reflects the structural skeleton of the local bridge construction and indicates an expressive duality between the covered bridge's rich origin and the everyday garden trellises we construct today. This oscillation between rooted local knowledge and global aspirations is a meditation on animacy and type. The pedestrian bridge stands rooted in the memory of place yet also uprooted from time, a proud regional form that punctuates one's experience of Les Jardins de Metis.

Planting Schedule

- Salvia x sylvestris* - Sallyrosa April Night Meadow
- SageClematis x 'Toki'* - Toki Clematis
- Mitchella repens* - Squaw Vine



Ithiel Town Lattice Truss Bridge Patent

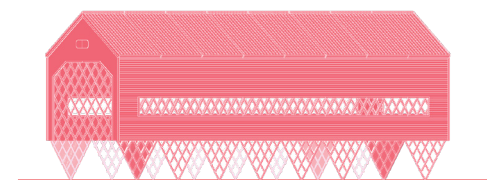


Exploded Construction Drawing

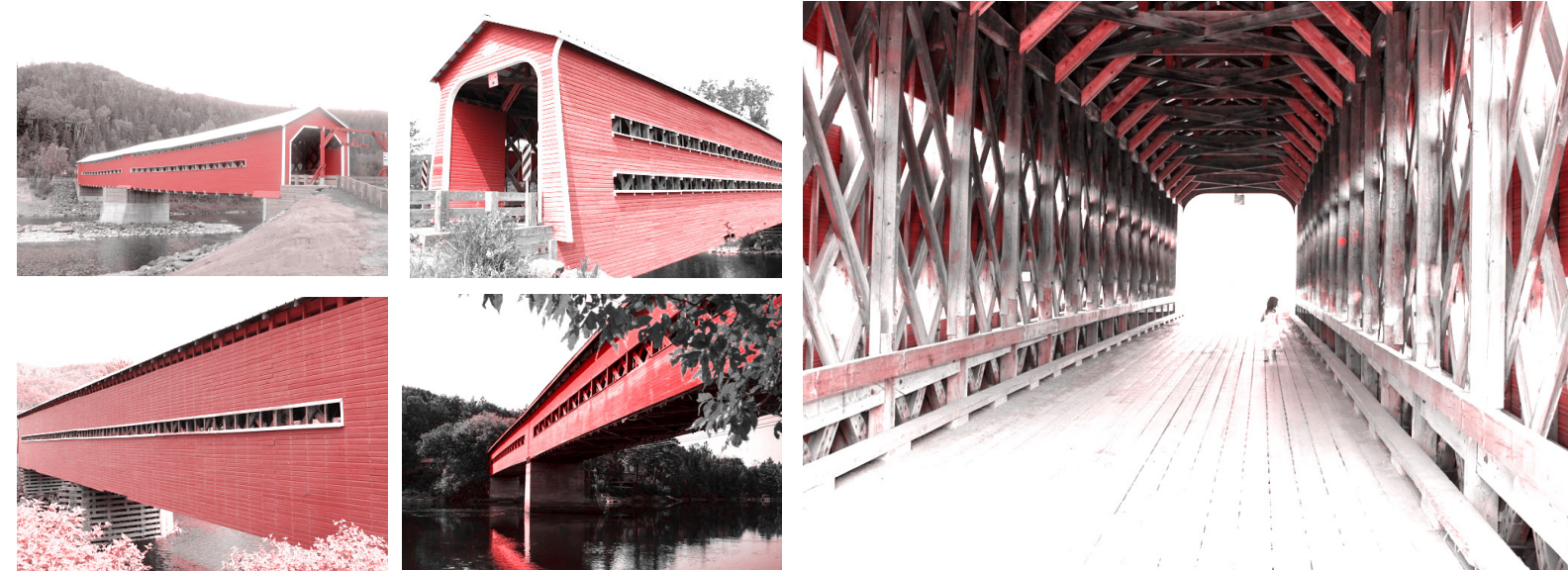
Garden Plan - Oblique



Un Pont Couvert / A Covered Bridge

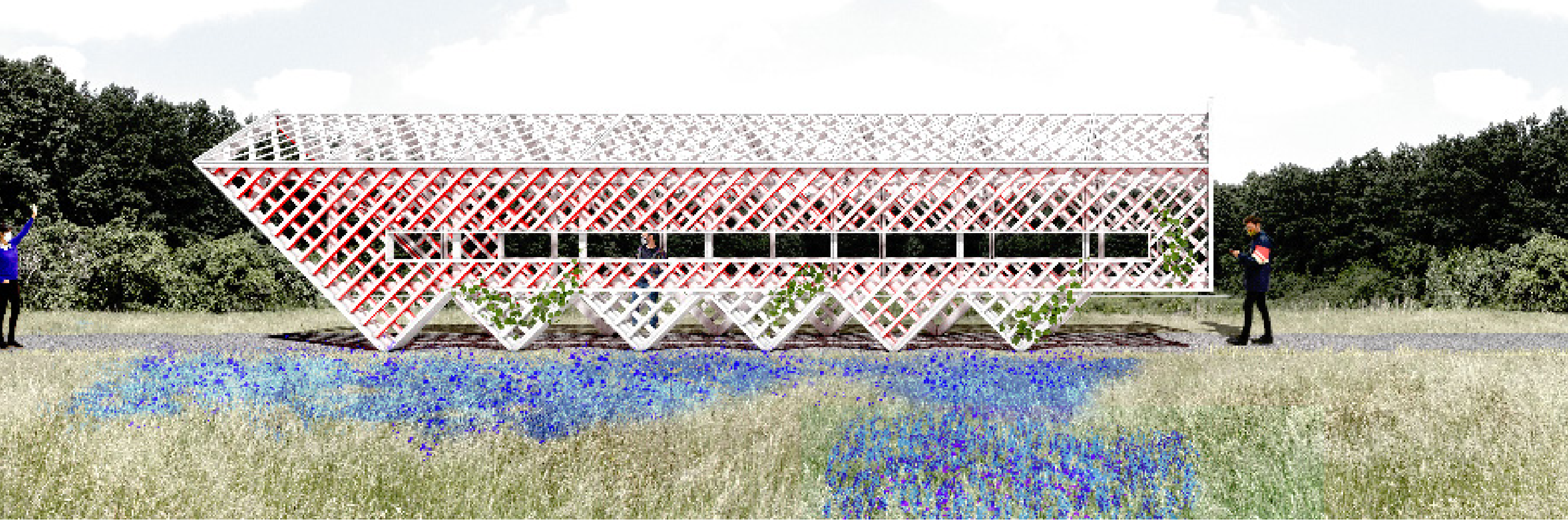


Le Pont Errant / The 'Wandering' Bridge

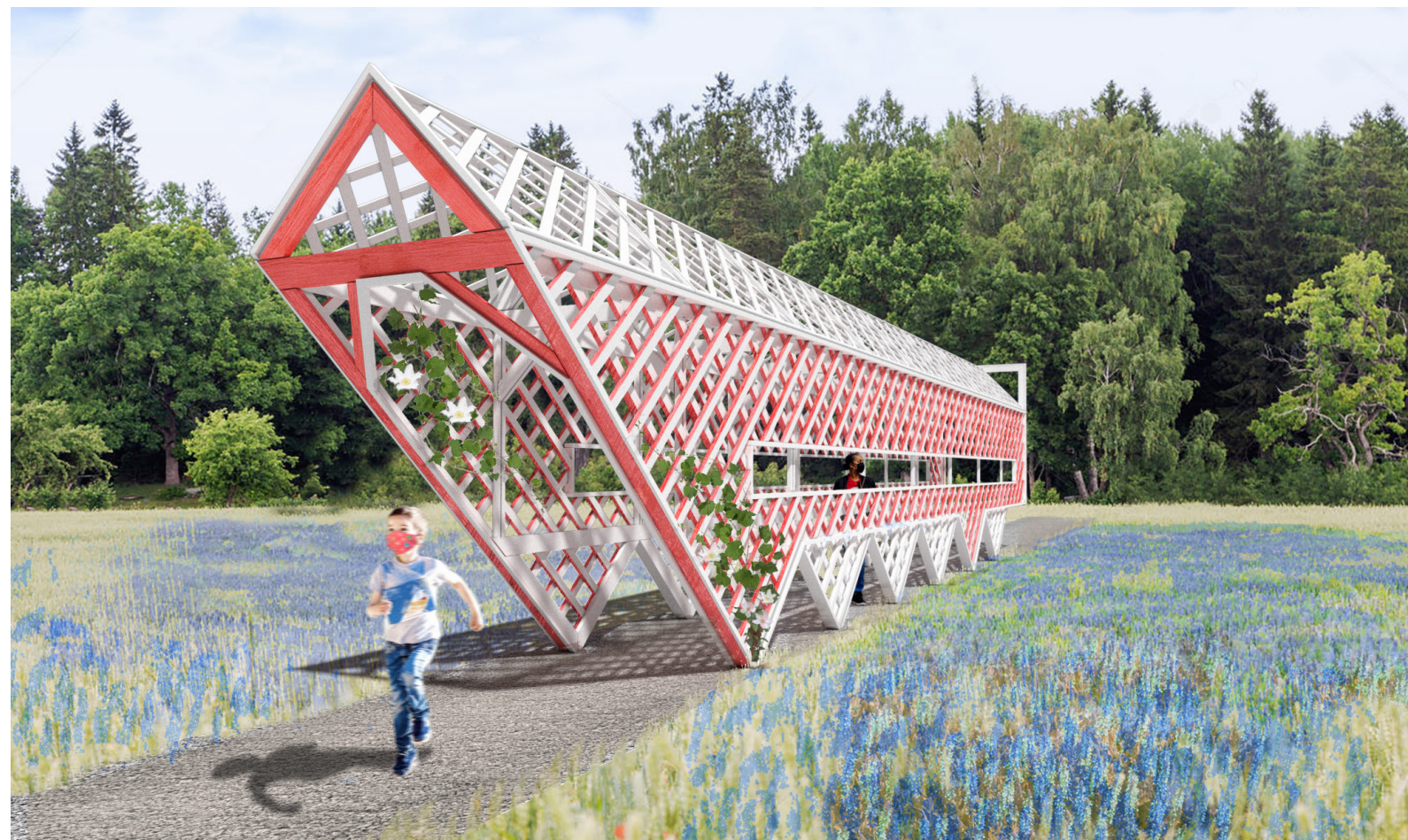


Les Pont Couverts - Exterior

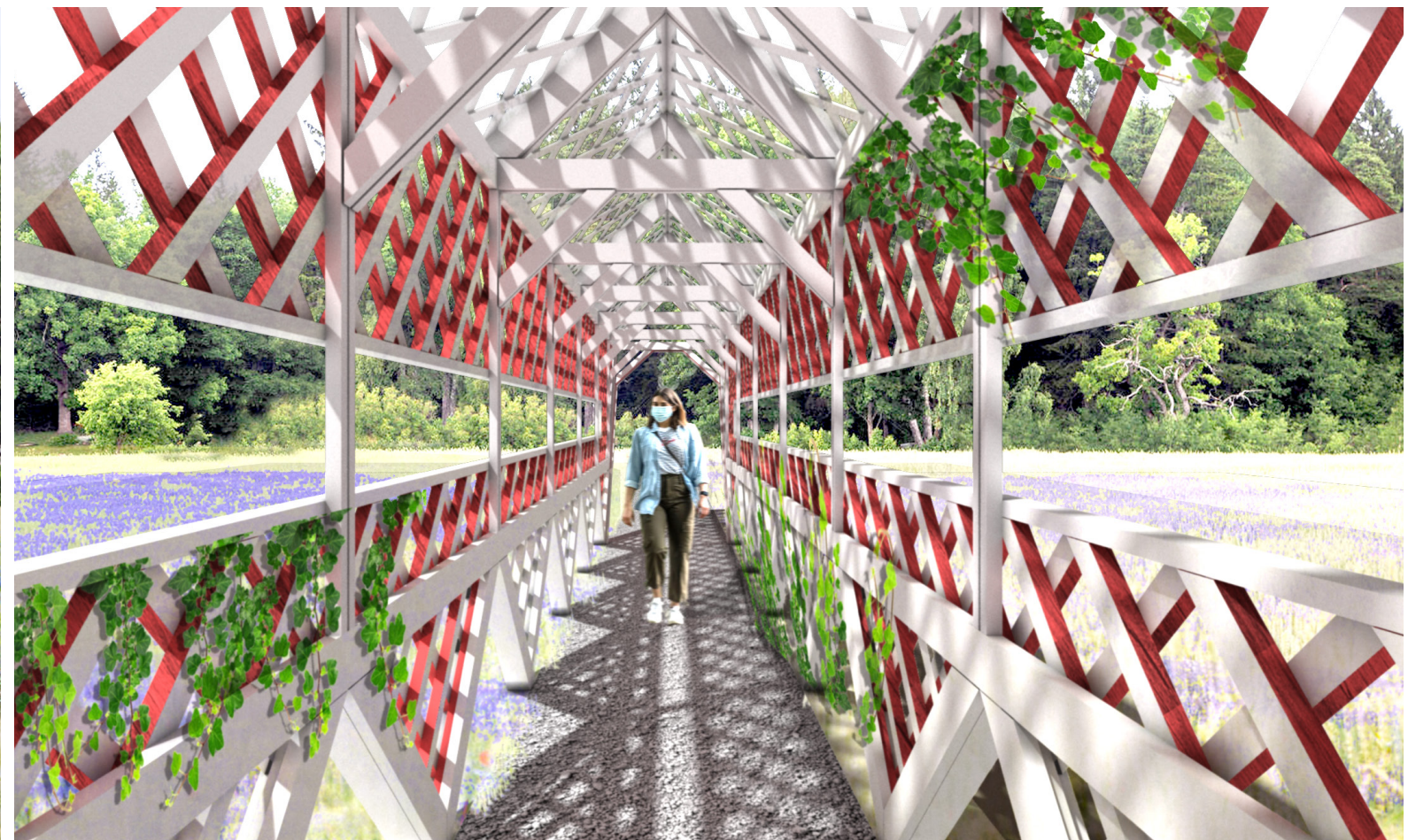
Covered Bridge Lattice - Trusswork



Garden Elevation



Panorama Ribbon Window



Corridor View