

“Ex uno, multis”

Indigenous groups have long evolved ways to manage bi-culturally diverse ecosystems that provide goods and services, and ceremonial spaces essential to life and maintaining cultural traditions. Industrialization and globalisation eroded the relevant function of these landscapes that no longer have the capacity to sustainably meet demand. New land management options are required. Traditional methods of “perennial management” can expand our discourse to address our current and future relationship with the land.

Coppiced trees are intentionally chopped in this garden and have since grown back, creating a landscape of “stools.” Place-based, “ex uno, multis” is both human scale and a reflection of its local surroundings. Three enormous stools provide successional experiences and an interpretation of silvicultural spatialities, or “from one, many.”

Visitors are encouraged to wander inside the tension of the macro-micro worlds that surround them and in the shadow of more “high-value” timber, transcending generations. This coup, which embraces globality in its attendees by reducing barriers to speech and fostering a transmission of world perspectives and value systems in a place characteristic of more ceremonial garden arrangements, solicits shade, comfort, and a variety of spatial sequences while passing through.

International Garden Festival 2023, 24th Edition
Reford Gardens
“EX UNO, MULTIS”

November 29, 2022



A forest thins, giving way to a coups of whips/
bare root:

- Red Maple (*Acer rubrum*)
- Sugar Maple (*Acer saccharum*)
- Black Alder (*Alnus glutinosa*)
- Yellow Birch (*Betula alleghaniensis*)
- White Birch (*Betula papyrifera*)
- Aspen (*Populus tremuloides*)
- Northern Red Oak (*Quercus rubra*)

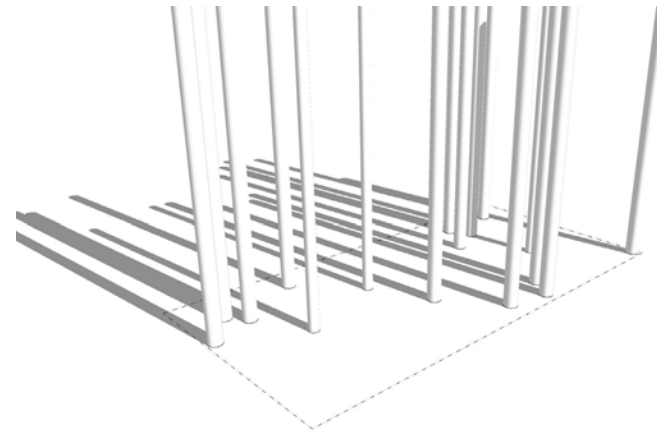
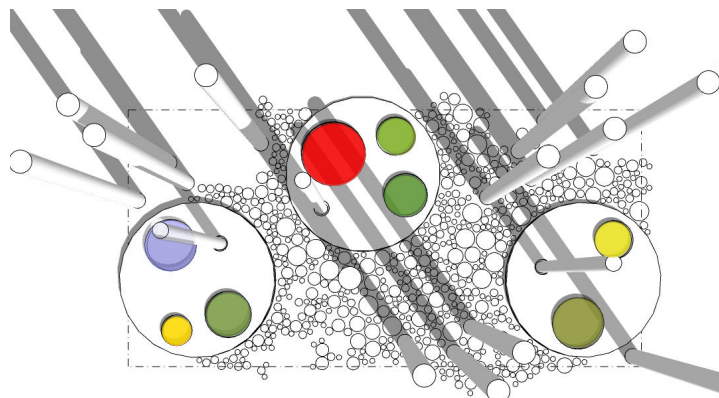
These pioneering and coppice-friendly species
are paired and under planted with :



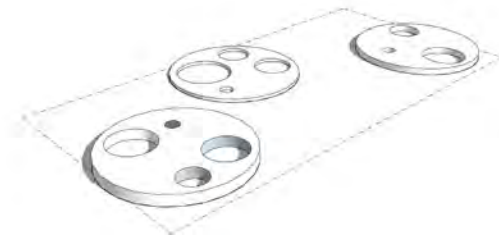
- Canada Anemone (*Anemone canadensis*)
- Wood Anemone (*Anemone nemorosa*)
- Lily of the Valley (*Convallaria majalis*)
- Wild Strawberry (*Fragaria virginiana*)
- Woodland Sunflower (*Helianthus divaricatus*)
- Partridgeberry (*Mitchella repens*)
- White Trillium (*Trillium grandiflorum*)
- Goldenrod (*Solidago caesia*)

Amidst the “stools”, a forest floor of woody
“vegetation” (*Robinia rounds*) is inter-planted
giving way to a vibrant scenography of:

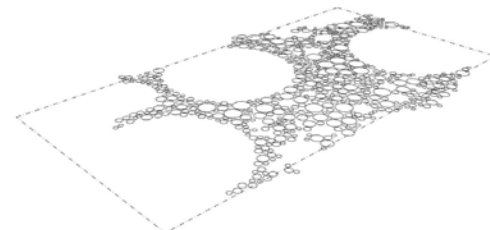
- Common Bluebell (*Campanula rotundifolia*)
- Wild blue phlox (*Polemoniaceae divaricata*)



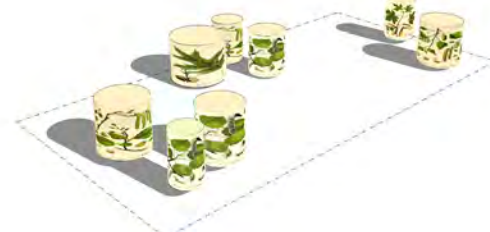
A “resource area” within the existing forest is thinned.



Woodland “stools” emerge from three “high-value” stumps,
providing recreation space and areas for knowledge
transmission.



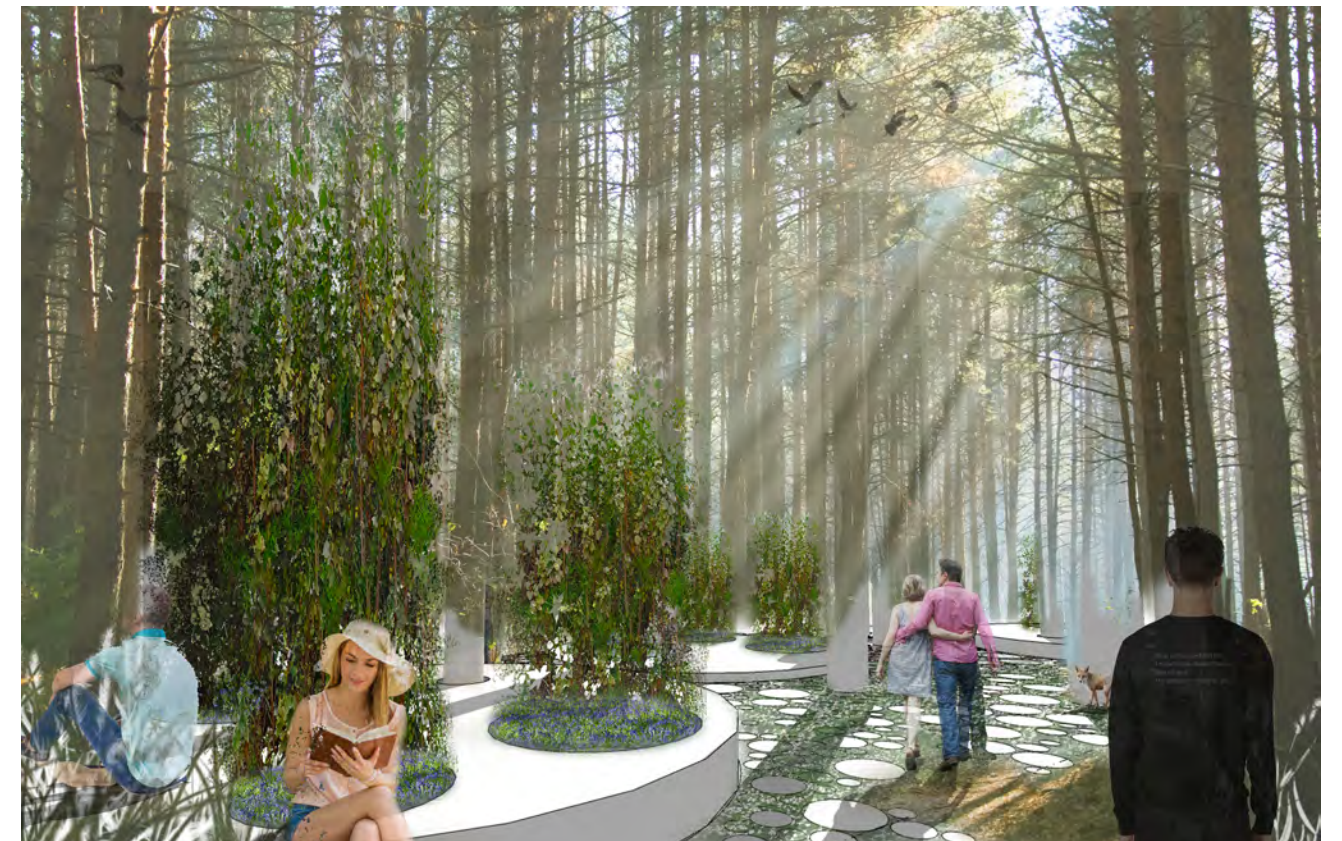
“Seasonal Rounds” (*Robinia wood paving*) provide access
to the resource area.



“Spatial Ecologies” emerge from the stools -
“From One, Many”



Cut “Stools” - contemporary garden furnishings - appear to give birth to species of culturally modified
woods. Varying heights encourage alternate points of view.



The Coups (“Forest Garden”); it’s shape(s) a sacred symbol of the interdependence of all forms of life.