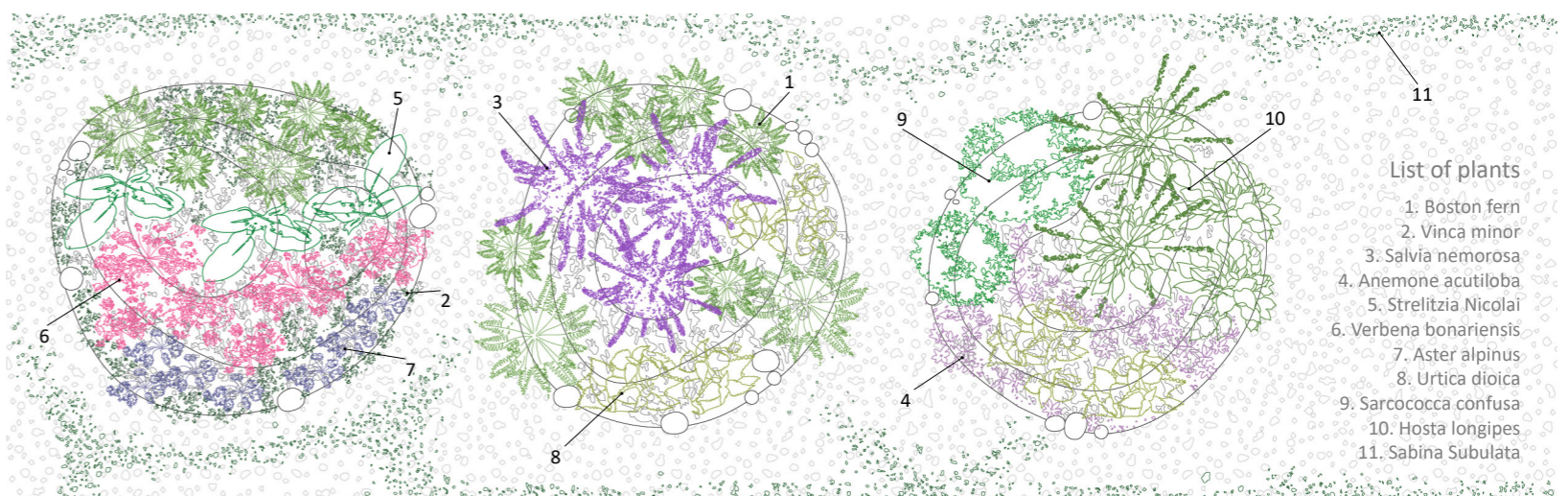


Ground plan- 1/80

- 1. Ponds
- 2. Temporary garden
- 3. Meeting spaces
- 4. Site boundary line 10x20m
- 5. Filter of trees(birch and maple)

The concept of our proposal is "foster" a garden but not create a new one, it's such like a re-assemble progress to form a garden as time goes by. We seek for a sustainable approach of form-materialization through excavating and filling with natural soil, playing with micro-topography that form mounds with vegetation and pits transformed into rain collector. Trying to generate the connection between native environment and our design simulating the nature by selected materials, trunk as garden furniture, cobble as path marker that the garden will not be supposed it as an implantation, it will be well integrated with the surroundings.

Therefore, in summer, visitors could have sunny and open spaces, at the same time, shade spaces with light spots filtering through trees. In different hour of a day, the garden's appearance is distinct. In the morning, visitors can be around into a moisturizing mist quiet garden. At noon, exploring a blooming corridor with combination plants. Feeling the peace in the garden bathed with afterglow terminating a day. When the festival ends, these plants can be reused in urban spaces.



List of plants

- 1. Boston fern
- 2. Vinca minor
- 3. Salvia nemorosa
- 4. Anemone acutiloba
- 5. Strelitzia Nicolai
- 6. Verbena bonariensis
- 7. Aster alpinus
- 8. Urtica dioica
- 9. Sarcococca confusa
- 10. Hosta longipes
- 11. Sabina Subulata



View of temporary garden from the meeting spaces at noon



View of the entire garden from ponds in a foggy morning



View of the meeting spaces from path of Jardins de Métis at dusk