

BURROW UNDER THE GROVE

PROJECT NARRATIVE

IN A TYPICAL tree stand, the individual thrives through participation in the group. The community provides resilience and life-support functions with its network of shared roots. In our garden, the visitor is drawn into a bower of interwoven branches, which arch away from cylindrical planters anchored to the ground. The arching branches will be woven into basket-planters with reedy thatch and will host a lush and diverse plant community. The ensemble is meant to evoke, albeit abstractly, the experience of an aspen grove from a “worm’s-eye” perspective among its web of roots. The garden shall offer experiences both primeval and fresh, appealing to the archetype of the Sacred Grove, a locus for ritual, memory and meditation. In addition, the installation shall demonstrate conservation action and the empowerment of indigenous peoples; the basket planters will be woven of locally-harvested invasive plants—phragmites, reed meadow grass, autumn olive, Norway maple and buckthorn—using traditional basket-weaving techniques. And the bower of roots shall showcase the bent wood construction of Eastern Woodlands indigenous peoples.

PLANT LIST

SHADE MIX UNDER PLANTERS

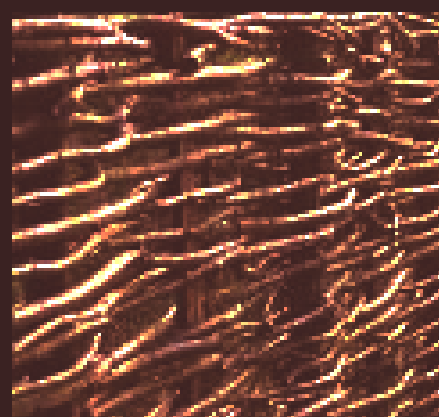
Gaultheria procumbens Wintergreen	Thelypteris noveboracensis New York Fern
Carex stricta Tussock Sedge	Polystichum acrostichoides Christmas Fern
Cornus canadensis Bunch Berry	Polystichum commune Haircap Moss
Osmunda cinnamomea Cinnamon Fern	Vaccinium angustifolium Lowbush Blueberry

SUN MIX ON MOUNDS

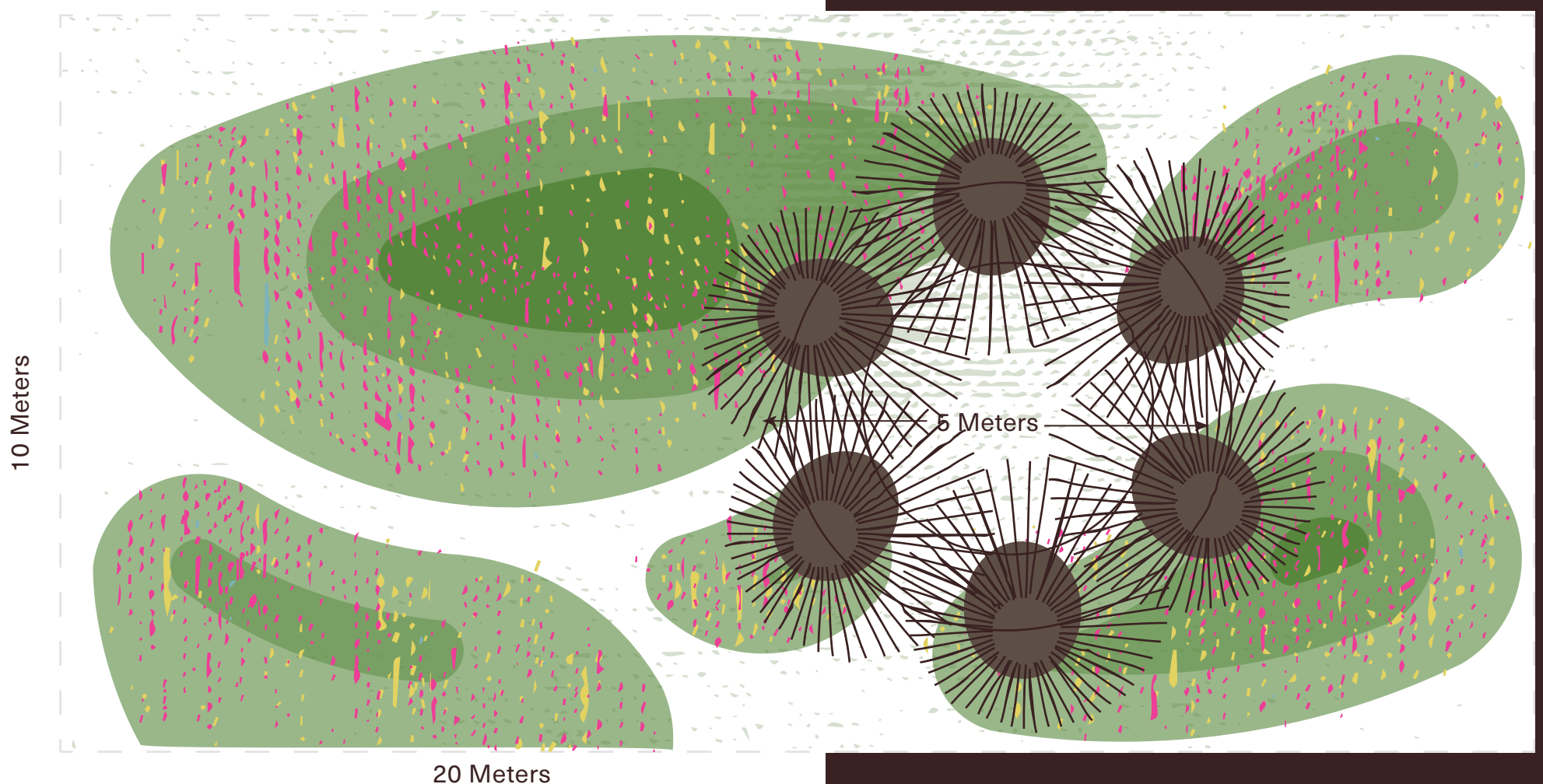
Monarda fistulosa var. mollis Wild Bee Balm	Panicum virgatum ‘Cape Breeze’ Panic Grass
Deschampsia cespitosa Tufted Hair Grass	Schizachyrium scoparium ‘Standing Ovation’ Little Blue Stem
Lobelia cardinalis Cardinal Flower	Symph. oblongifolium ‘October Skies’ October Skies Aster
Filipendula rubra Queen of the Prairie	

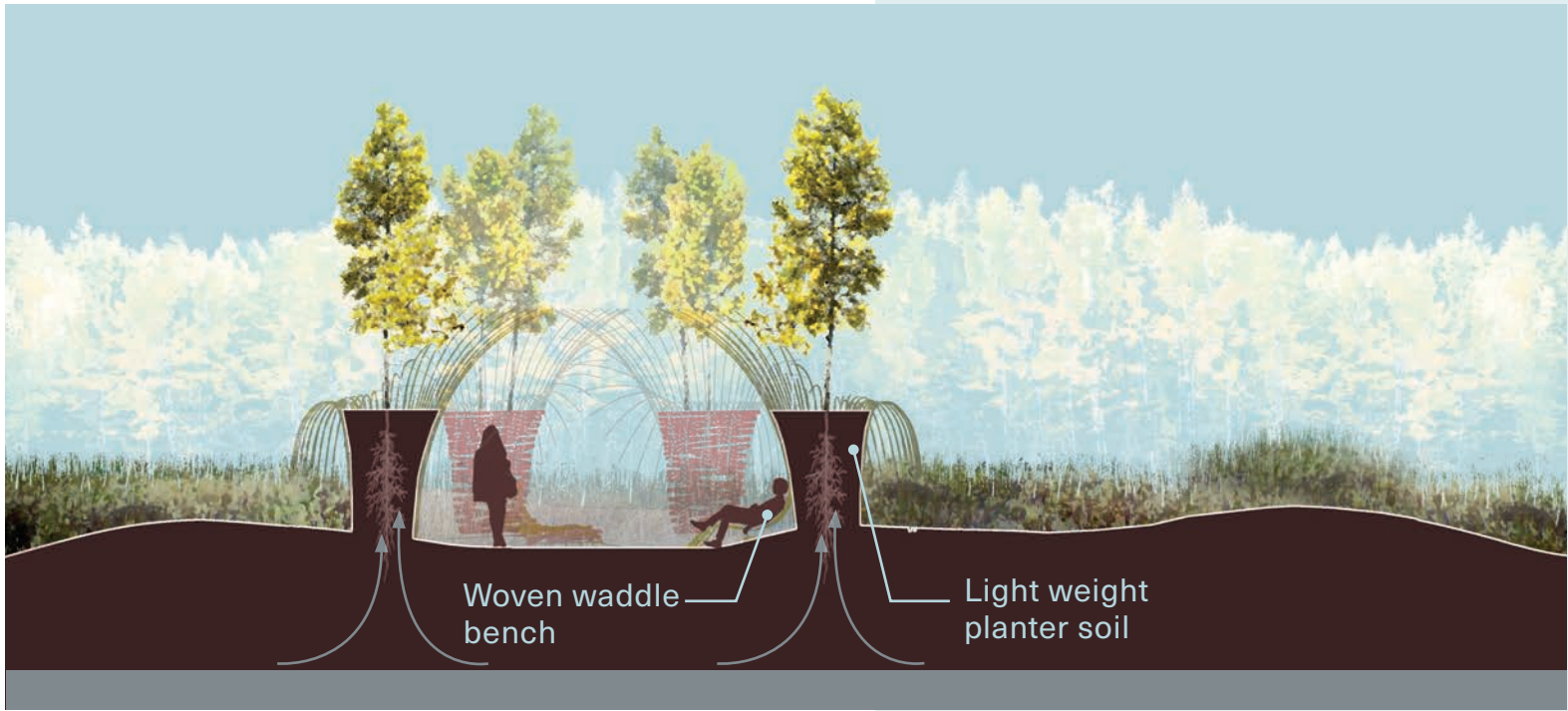
PLANTER MIX

Polystichum acrostichoides Christmas Fern	Carex plantaginea Seer Sucker Sedge
Asplenium trichomanes Maidenhair Spleenwort	Veronica umbrosa ‘Georgia’ Creeping Veronica
Carex eburnea Bristle Leaf Sedge	Populus tremuloides Quaking Aspen



PLAN 1:80





SECTION 1:100



ELEVATION 1:100

