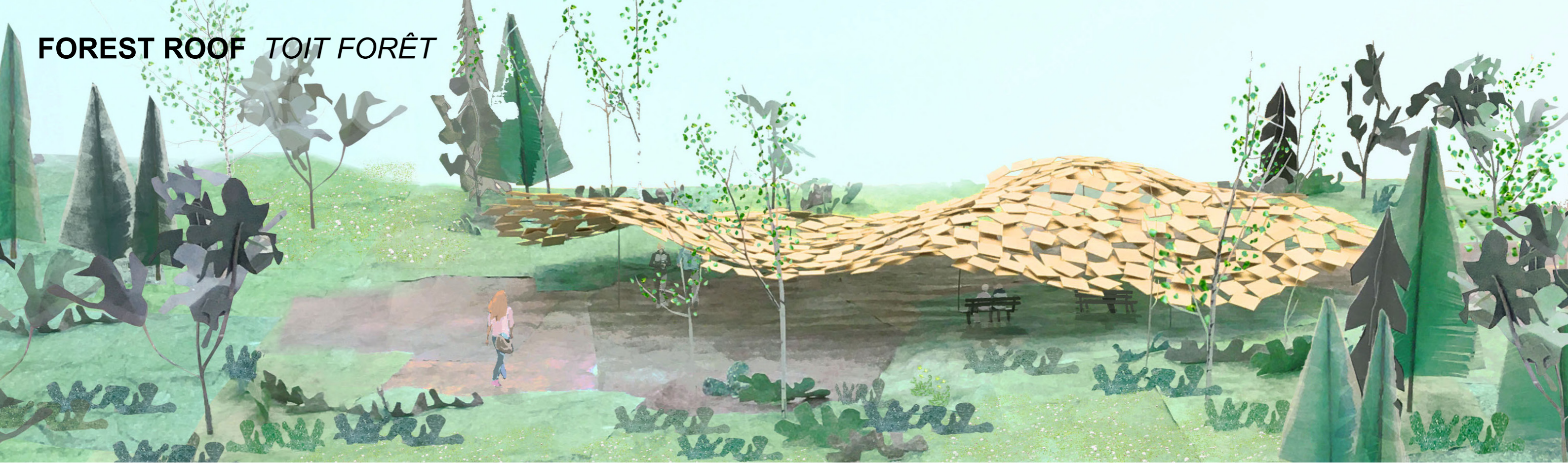
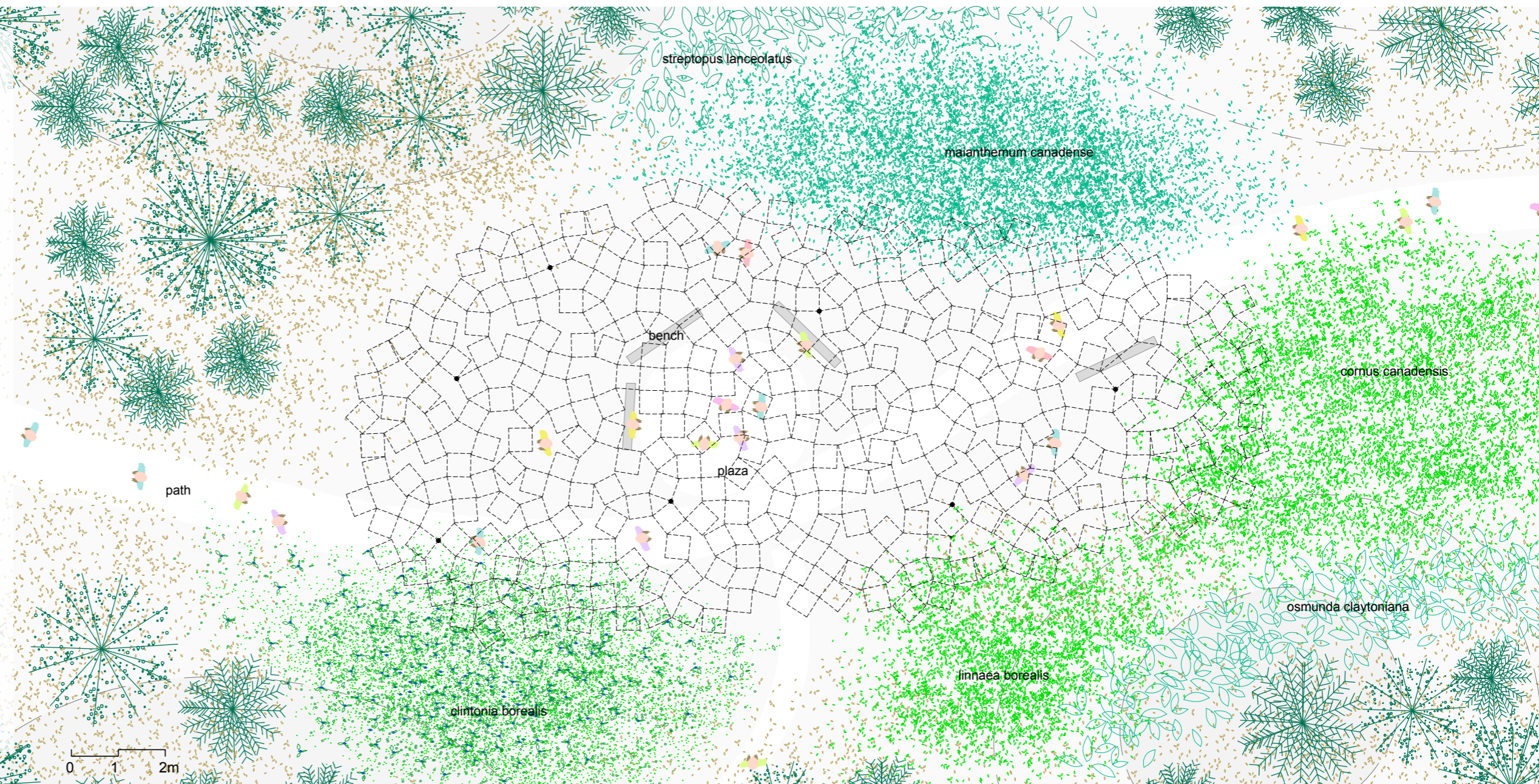


FOREST ROOF *TOIT FORÊT*



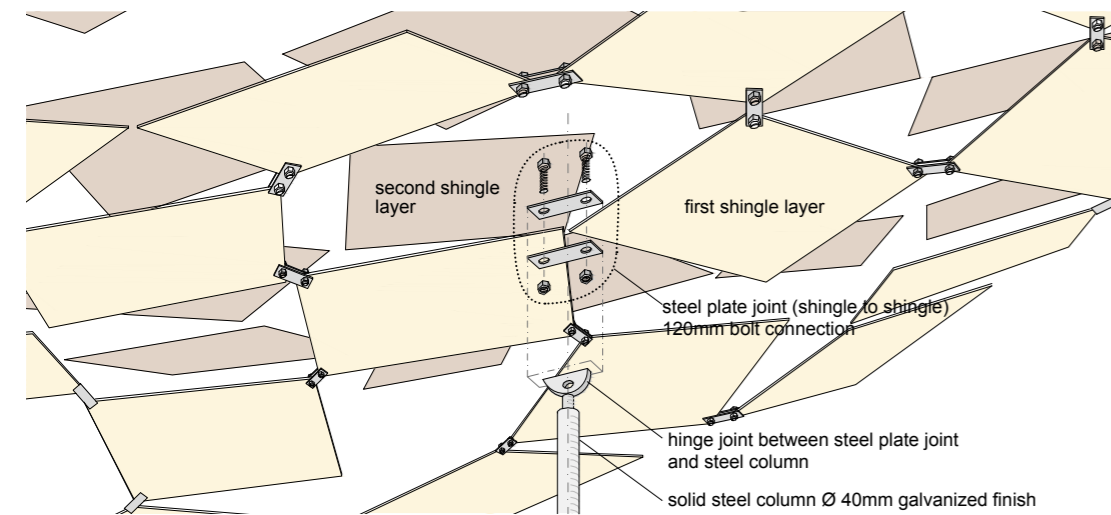
Exploring logics of dispersion and orders of nature, we thought of a free-form pattern which allows to perceive the landscape in a new way, creating a sort of open image where the boundaries between elements are blurred. We designed a flexible composition of square wood shingles fixed with steel plates, delicately lifted by thin steel columns. The two layers of shingles form a semi-rigid horizontal net which rises and dips following weight and column placement, creating an undulating open structure. Working together structurally as a whole, all components of the form participate in the stability of the roof in a non-hierarchical manner. The open pattern appears to be floating in its environment, weightlessly spread, somehow its lightness and shadow blending with the forest surroundings: a continuous natural canopy.

While the roof suggests protection from the elements and shelter, its porosity simultaneously allows elements to enter: light, breeze and rain become part of the space below, algae and lichen gradually spread to the shingles. With time, the roof becomes a porous component in continuity to the forest.



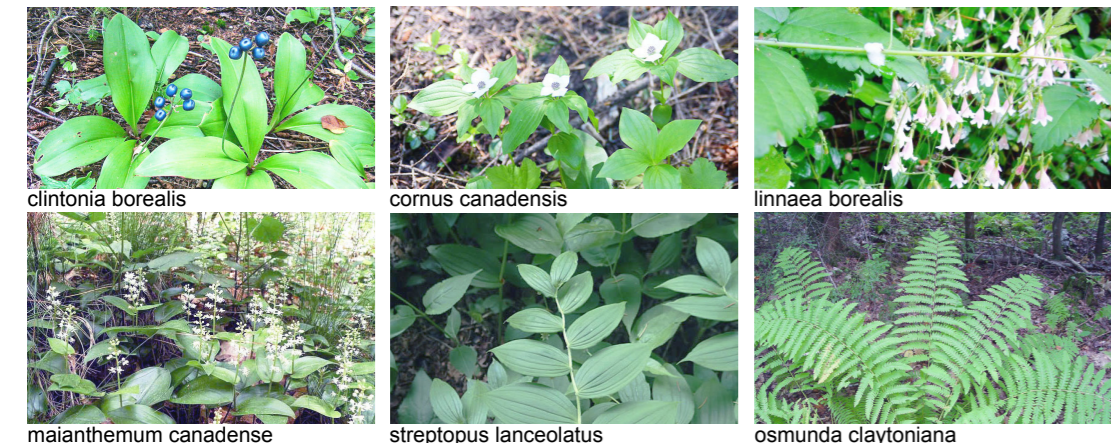


Walking towards the roof



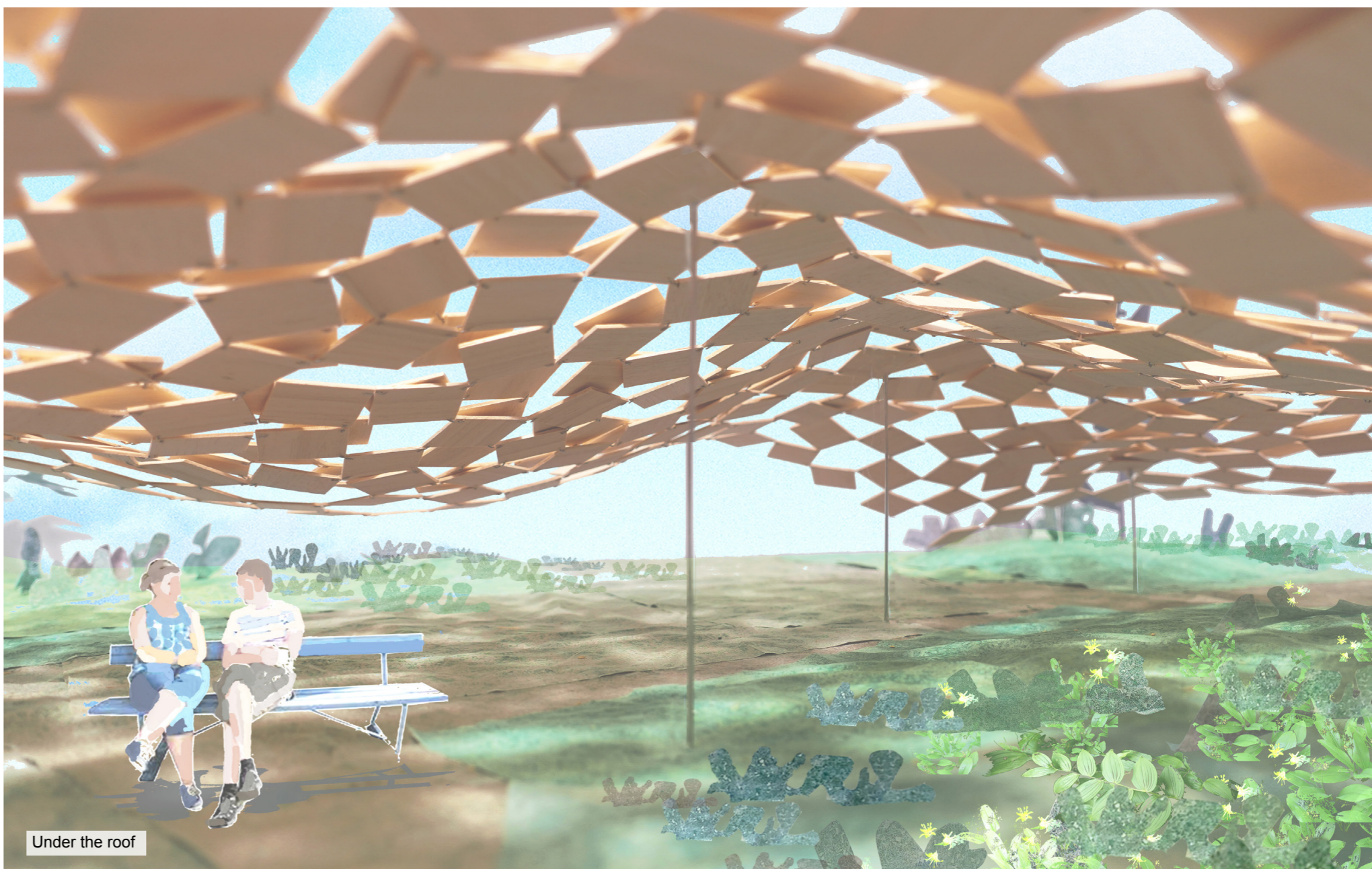
ROOF STRUCTURE

The roof is composed of two layers of 50x50 cm, locally sourced wood shingles with a thickness of 4mm. The shingles are fixed one to the other with a steel plate. The steel columns, with heights between 3,2m and 1,2m, are designed with a hinge joint to be welded to the steel plate at various angles. The base of the columns are reinforced concrete plinths, hidden underground.



FOREST GARDEN

We selected a preliminary variety of native plants that blend in harmoniously with the forest grounds and form a continuity with the existing soils and plants. The gardens are thought of as a natural and seamless extension of the forest grounds.



Under the roof