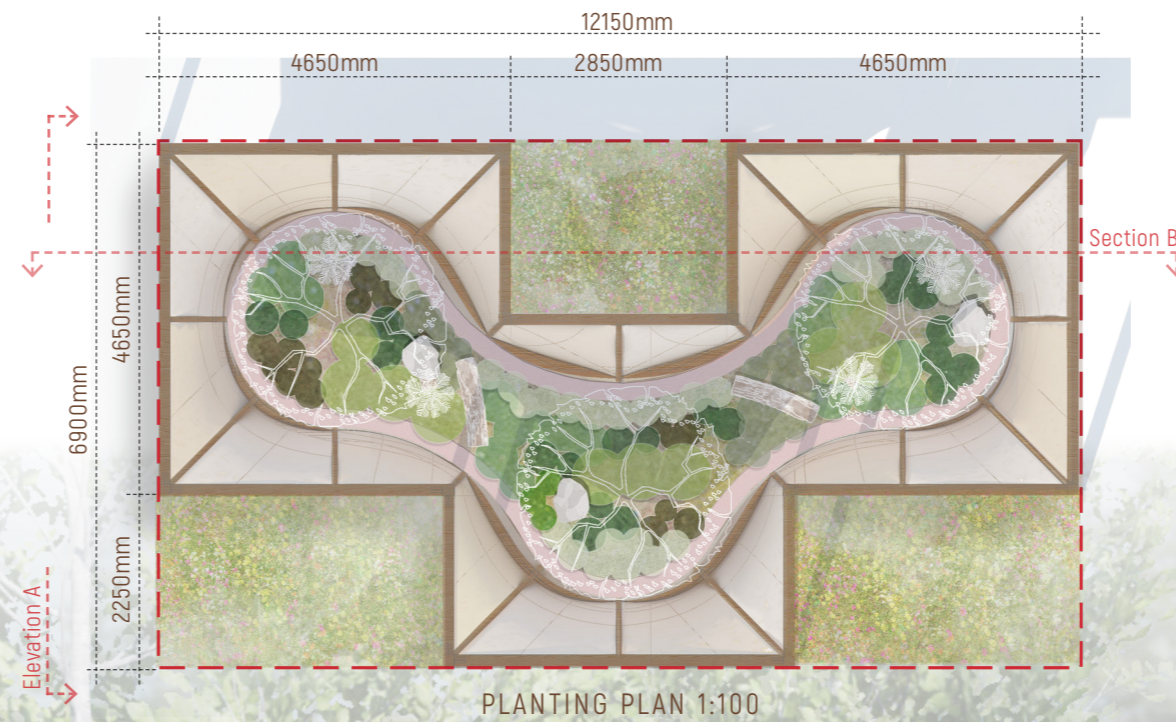


LARC-IN

Historically human society built houses to protect themselves from the environment: beasts, weather, and uncertainties. However, as we insert more dominance over nature from time to time, we no longer seek harmony but seize it to fulfill our expansion. To challenge the switching roles of humans and nature in terms of threat, 'LARC-IN' is an inverse form of wigwams, 'housing' and sheltering the local landscape from humans. The wooden frame structure uses birch bark, a traditional material widely utilized by the indigenous community, as a physical and visual segregation to protect the nature refuge. The inverted wigwams have two openings in which visitors can find themselves on a journey through physical immersion within the enclosure and visual admiration through the close encounter with the native species. The intervention trace back the root of the local culture through the form, planting and material, challenging visitors to rethink our relationship with nature and essentially reinterpret the status quo of local landscape vs industrialized landscape

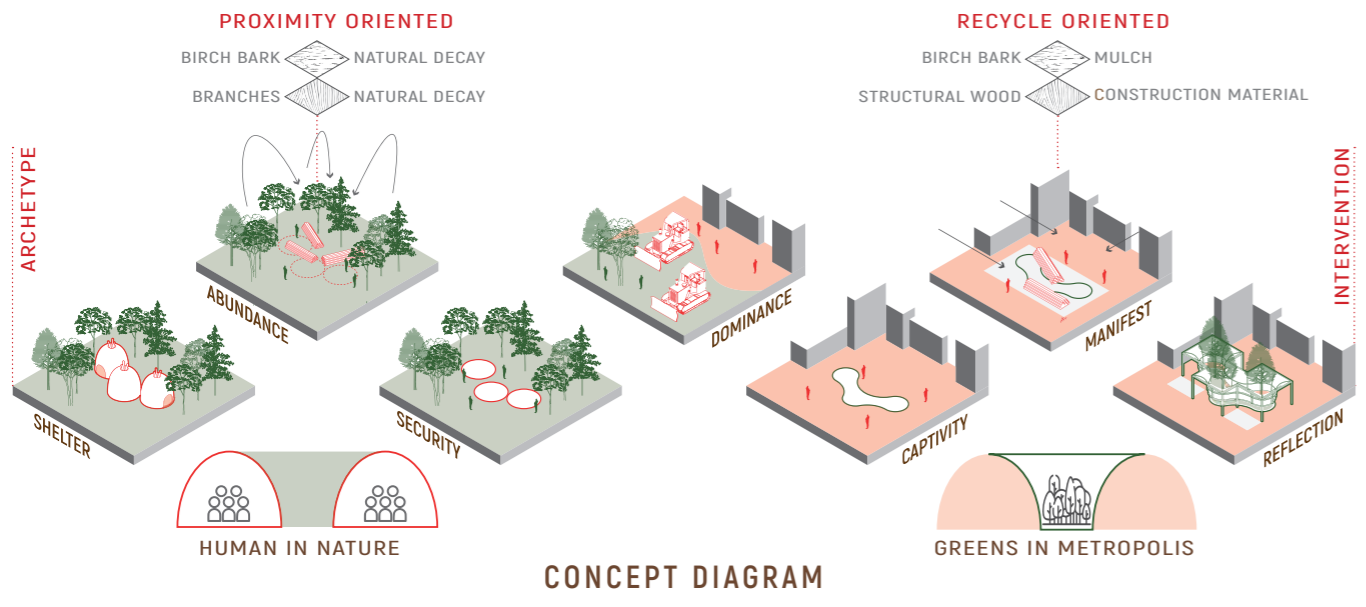


PLANTING LEGEND

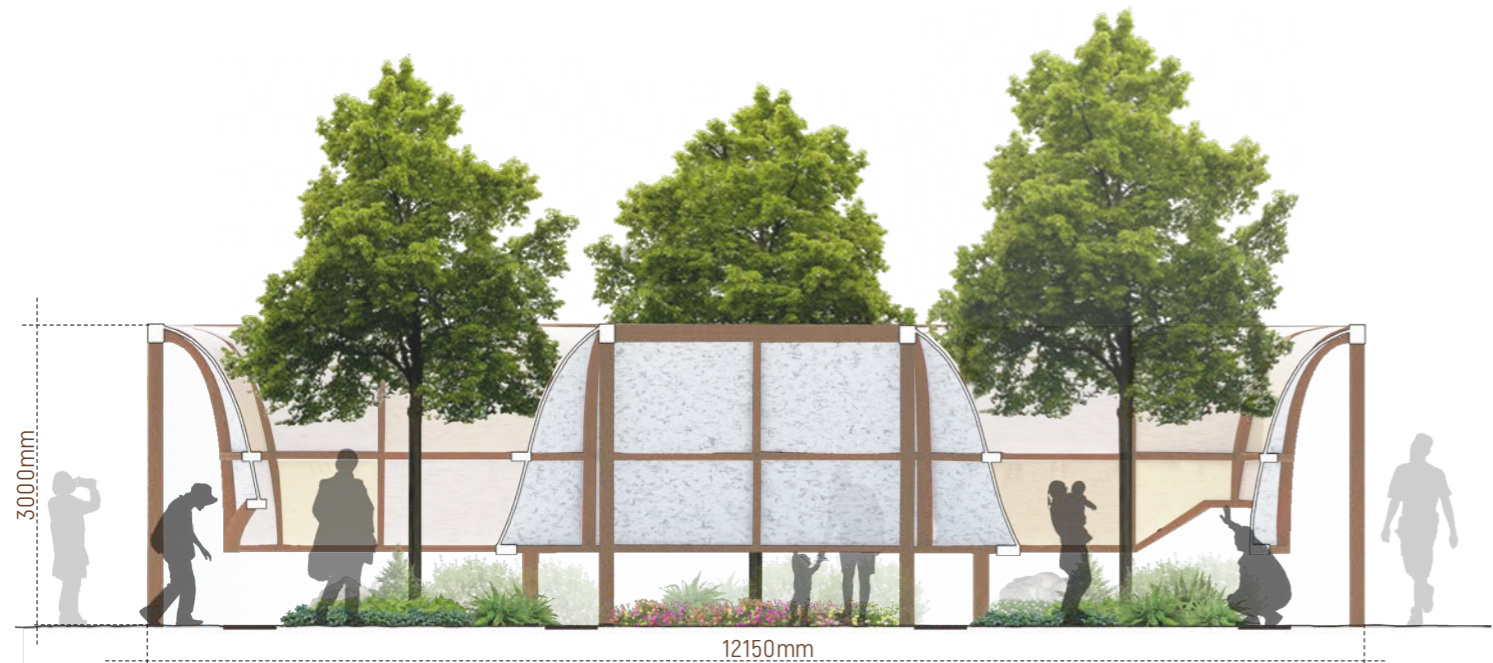
- | | |
|-----------------------------------------------------------------------------------------------------------------------|------------------------------------------------------------------------------------------------------------------|
|  <i>Coptis trifolia</i> |  <i>Aralia nudicaulis</i> |
|  <i>Rhododendron groenlandicum</i> |  <i>Asarum canadense</i> |
|  <i>Cystopteris bulbifera</i> |  <i>Trillium grandiflorum</i> |
|  <i>Abies balsamea</i> |  <i>Betula alleghaniensis</i> |
|  <i>Impatiens walleriana</i> |  Pathway |

- The planting palette shows a contrasting landscape: the exterior garden depicts the monoculture practices vs the complex diversity of natural vegetation within the inner garden..
- Addressing local indigenous practices and rediscovering the possibility of using plants as building materials and medicine.
- Shade tolerant and hardy plants to cope within the enclosed environment.





FRONT ELEVATION A - 1:50



SECTION ELEVATION B - 1:50

