

# GRAFTING KNOWLEDGE

Grafting Knowledge is an immersive and educational experience that evolves over time. The density of prunus trees is intended to create a contrast of indoors-outdoors, so that these ornamental trees provoke an intense feeling of immersion in visitors. The perception of entering a space built by vegetation, with small colourful spots that lead them to wonder about the installation and the experiments that take place in it. Visitors will have to climb onto the pedestal, like their are opening a door with a key, and from there they will be surrounded by

dense tree-like vegetation. Once in the plant space, each of the loops surrounding the trunks will call the visitor to approach their branches and realise that these, in the same tree, have different colours and different fruits. This will give them the chance to understand this agricultural practice while enjoying the ornamental garden at the same time. Of course, visitors will be able to take the fruits and enjoy them on the spot.



Floorplan

M 1:100 0,5 1 2,5

## Ribbon color coding

- **T-Budding or chip budding**  
Scion and Rootstock are significantly different on diameter. Before or during growing season
- **Side veneer graft, splice graft, whip or tongue graft**  
Scion and Rootstock have an equal diameter. During the growing season
- **Approach grafting**  
Scion and Rootstock remain attached to their root systems. During the growing season

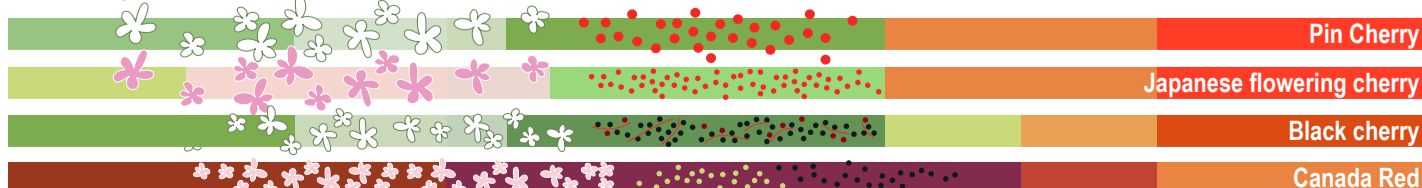
Tree species are selected according to their adaptability to the territory, the fruits they provide (edible) and their ability to be grafted. Mixed species combine contrasting colours and grafts of larger fruits as a remembrance of agricultural practice.

## Color palette

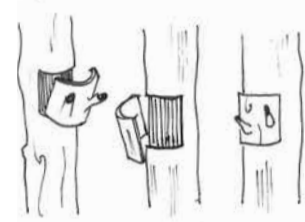
Scion species



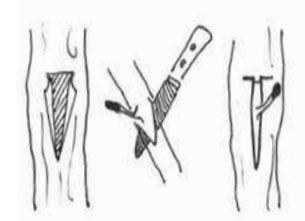
Rootstock species



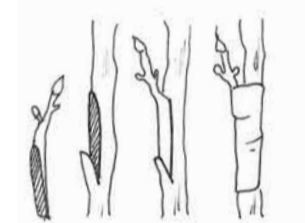
## Graft + Budding



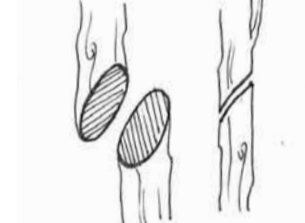
Chip budding



T-Budding



Side-veneer



Splice graft



Whip and Tongue graft



Approach graft

## Scion species



American plum  
(*Prunus americana*)



Canada plum  
(*Prunus nigra*)

## Rootstock species



Pin cherry  
(*Prunus pensylvanica*)



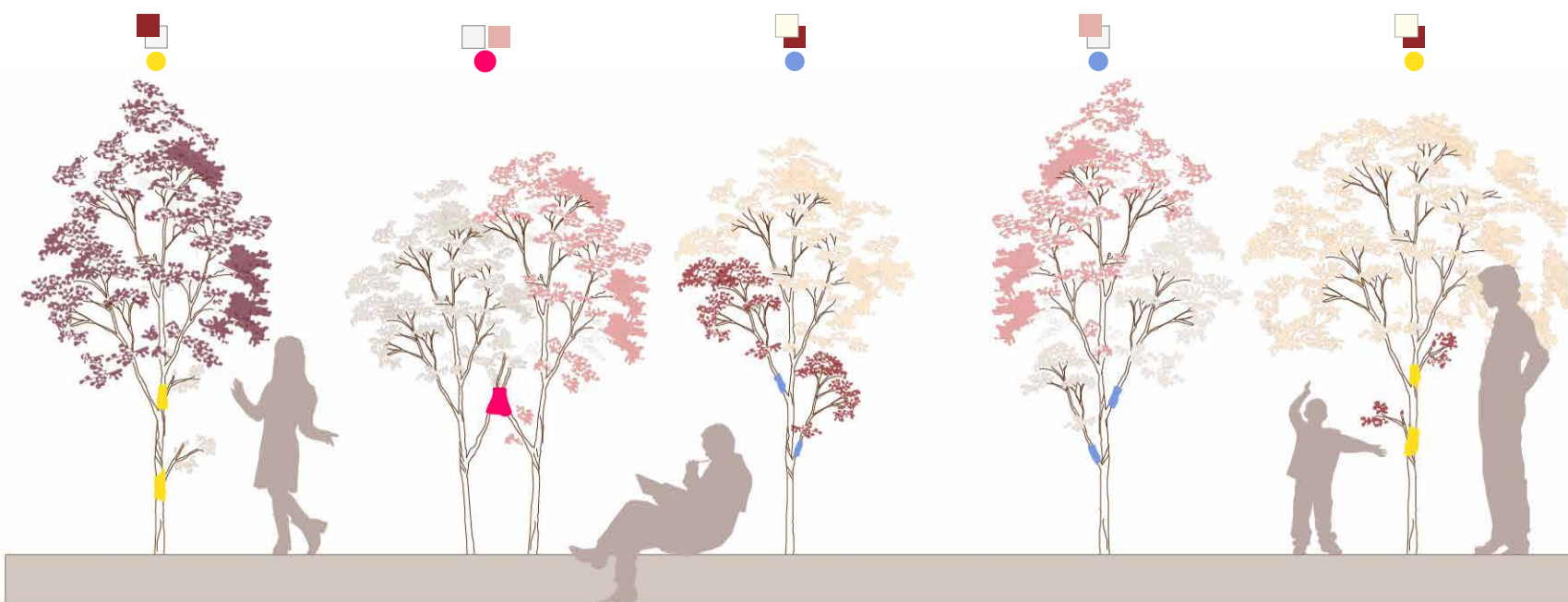
Japanese flowering cherry  
(*Prunus serrulata*)



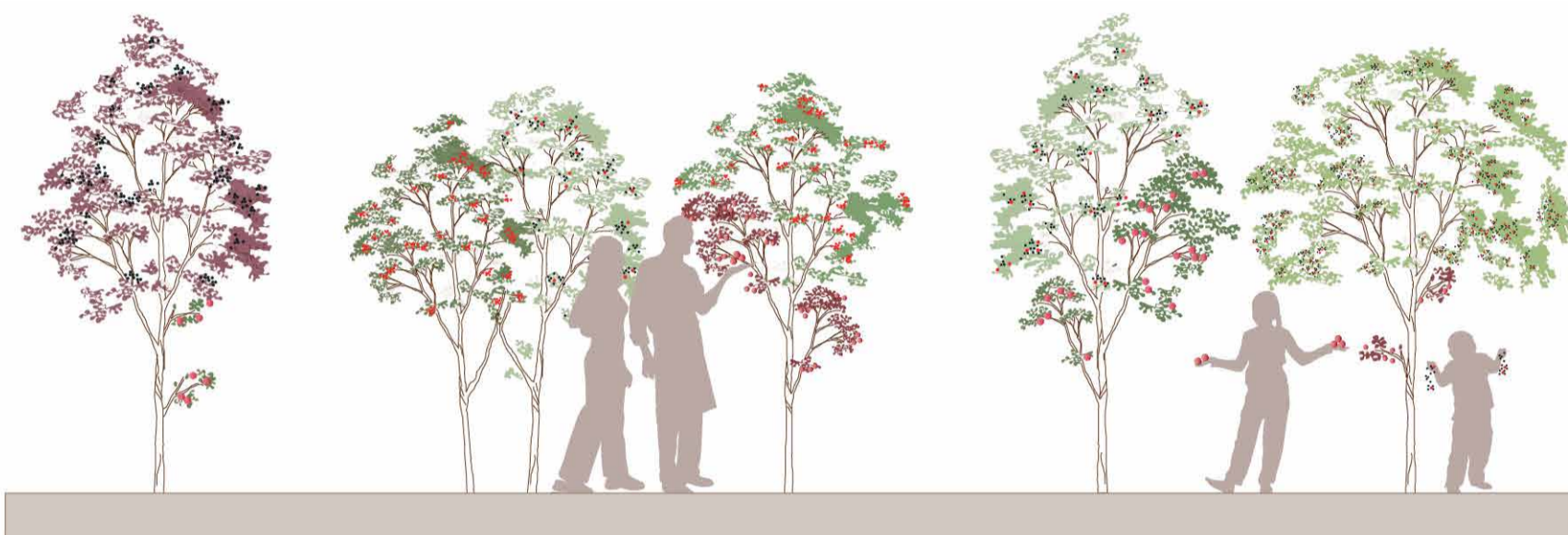
Black cherry  
(*Prunus serotina*)



Canada Red  
(*Prunus virginiana*)

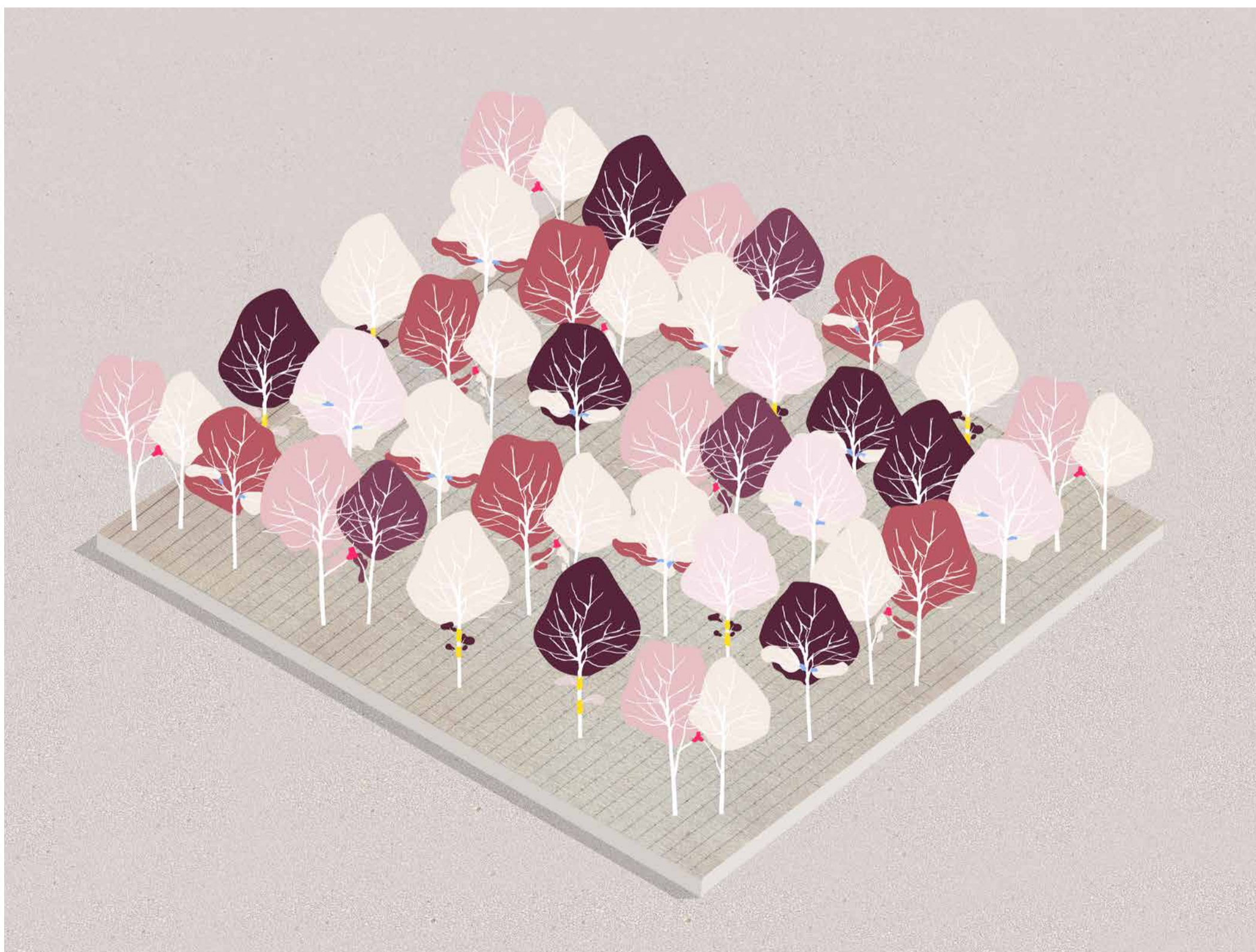


Front elevation - spring and early summer



Side elevation - summer

M 1:150 0,5 1 2,5



Perspective