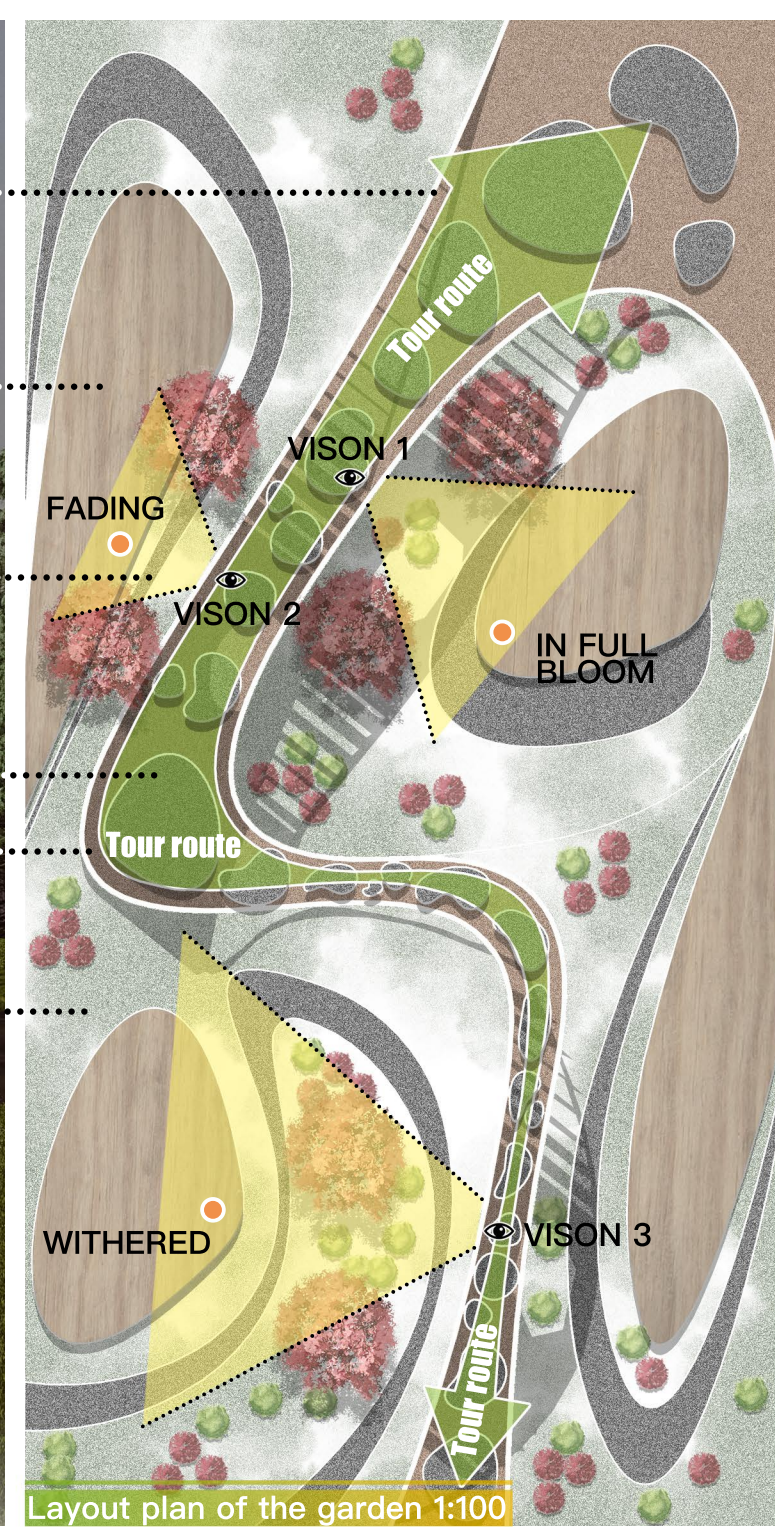
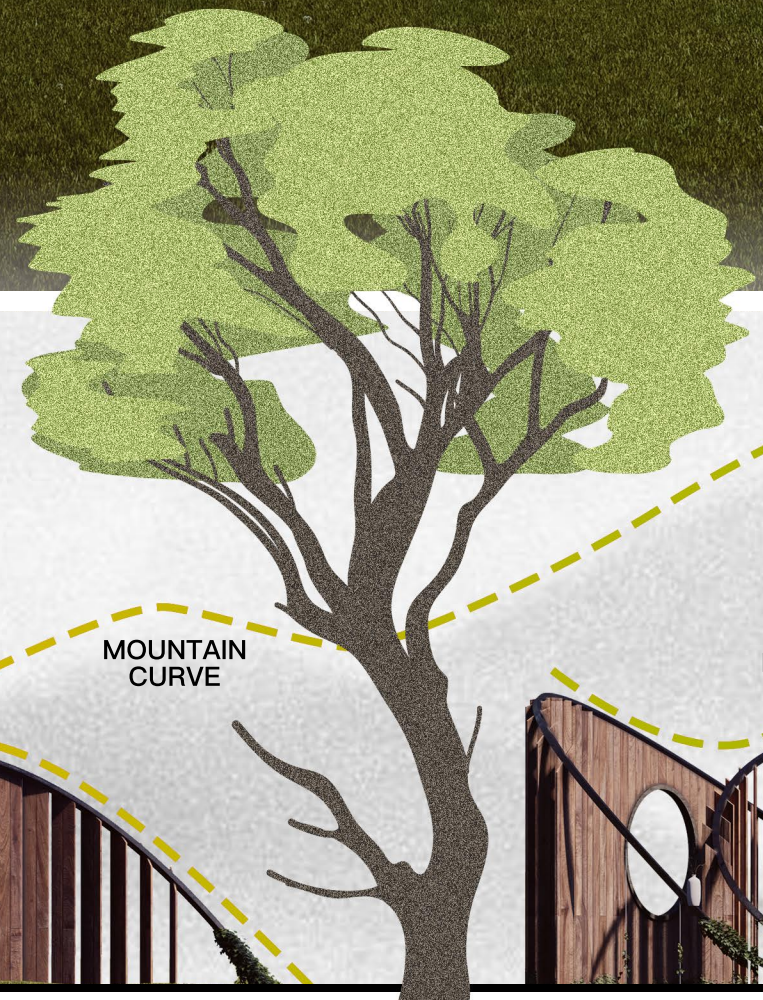


LIFE



This garden uses recycled steel, wood and stone to simulate the shape of a mountain range, which is both a landscape and a passage to the view, named – time, through the partial occlusion of the mountain range and the framing window on the mountain range, you can see the vase placed on the platform and the maple tree of different shapes, to achieve the effect of changing the scenery step by step, and leaving people with room for imagination about the picture outside the framing frame. Walking through the passage of time, you can see: the flowers in the vase from bloom to decay, the maple tree from young to growing, the flowers in the vase and the maple tree constitute a poetic picture, but also form a sharp contrast, that is, the contrast between decay and growth, by experiencing the decay of the rootless flower in the vase, contrasting the maple tree with roots gradually growing, changing, full of vitality, and experiencing the meaning of roots.

Main view



-  Acer rubrum x 6
-  Manzhusha x 27
-  Bellis perennis x 30
-  Display platform
-  Stepping Stone
-  Poa compressa



Elevations