

# FOLLOW YOUR EYES

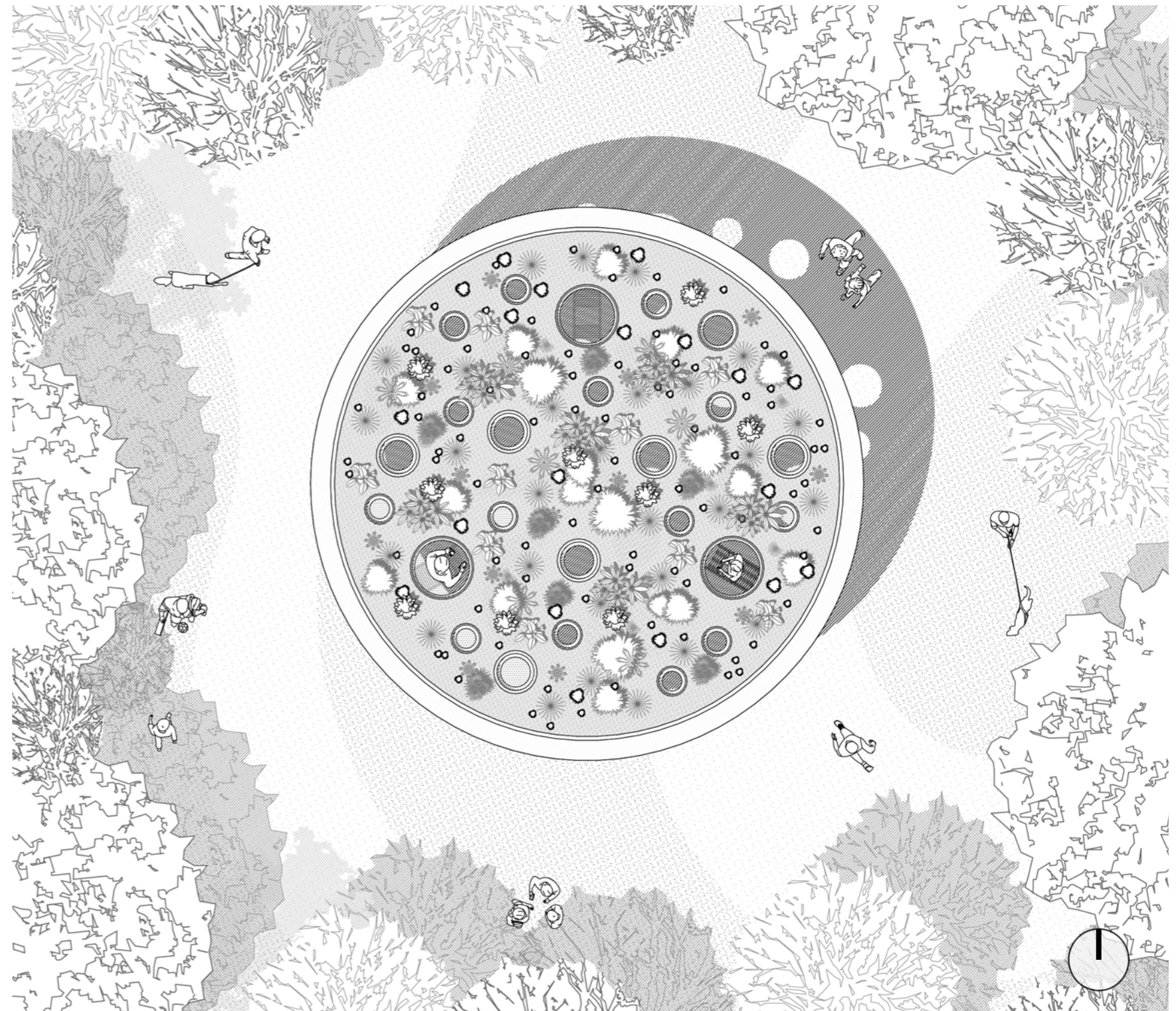


MY IMPRESSION OF THE SITE

In the process of design, I have always been thinking about these questions: What is nature? What is the definition of nature? Are human beings themselves within the scope of this definition? What about our buildings?

When I look at the relationship between human beings and nature from different perspectives, the image of nature becomes more diverse. At different times, we endow nature with our innate imagination, which are mysterious, ruthless, beautiful, or generous.

I hope to add a new viewing perspective through design, build a garden overhead, so that people can see, listen, smell, touch in a different physical state, and mobilize people's senses. Maybe, what will you think about something at the moment you raise your eyes in front of all giant flowers?



MASTERPLAN 1:100



PHALARIS ARUNDINACEA



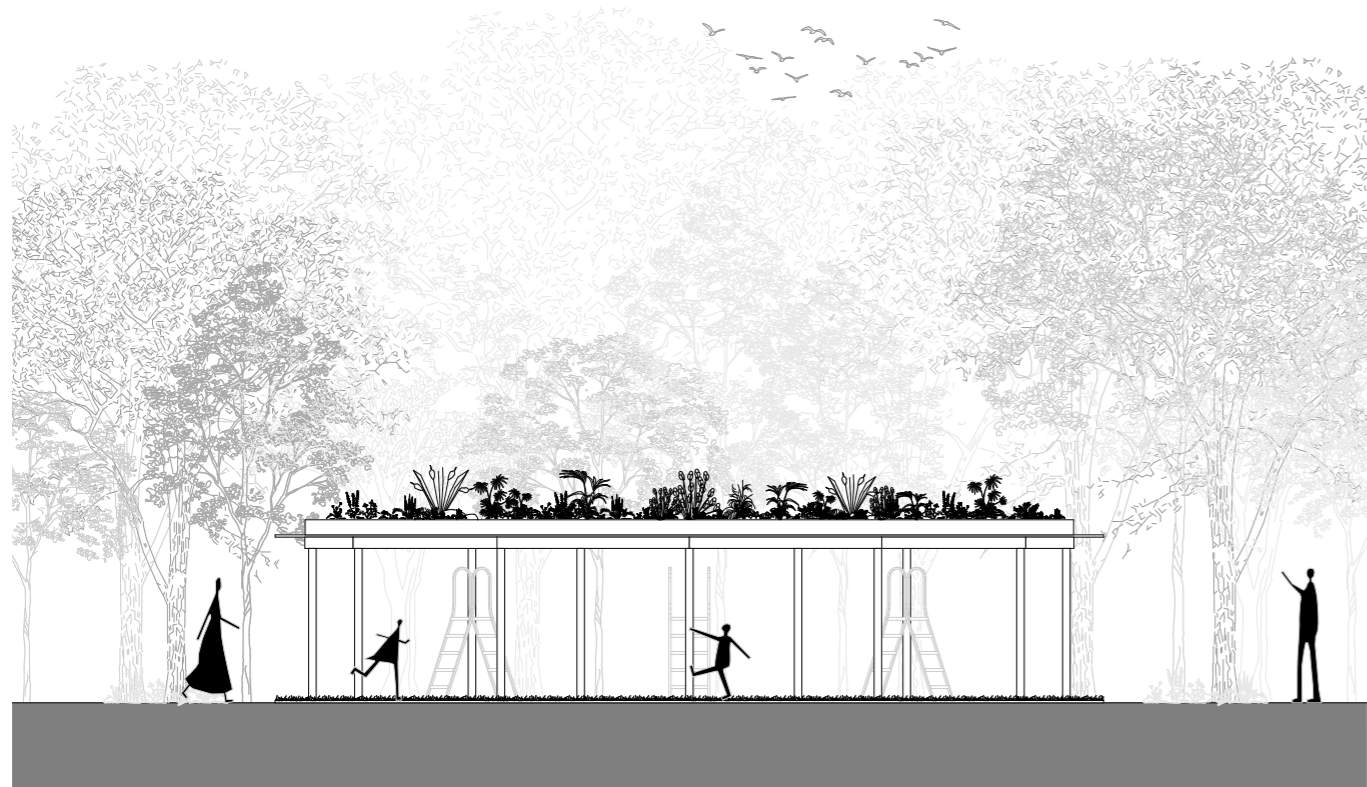
BLUE POPPY



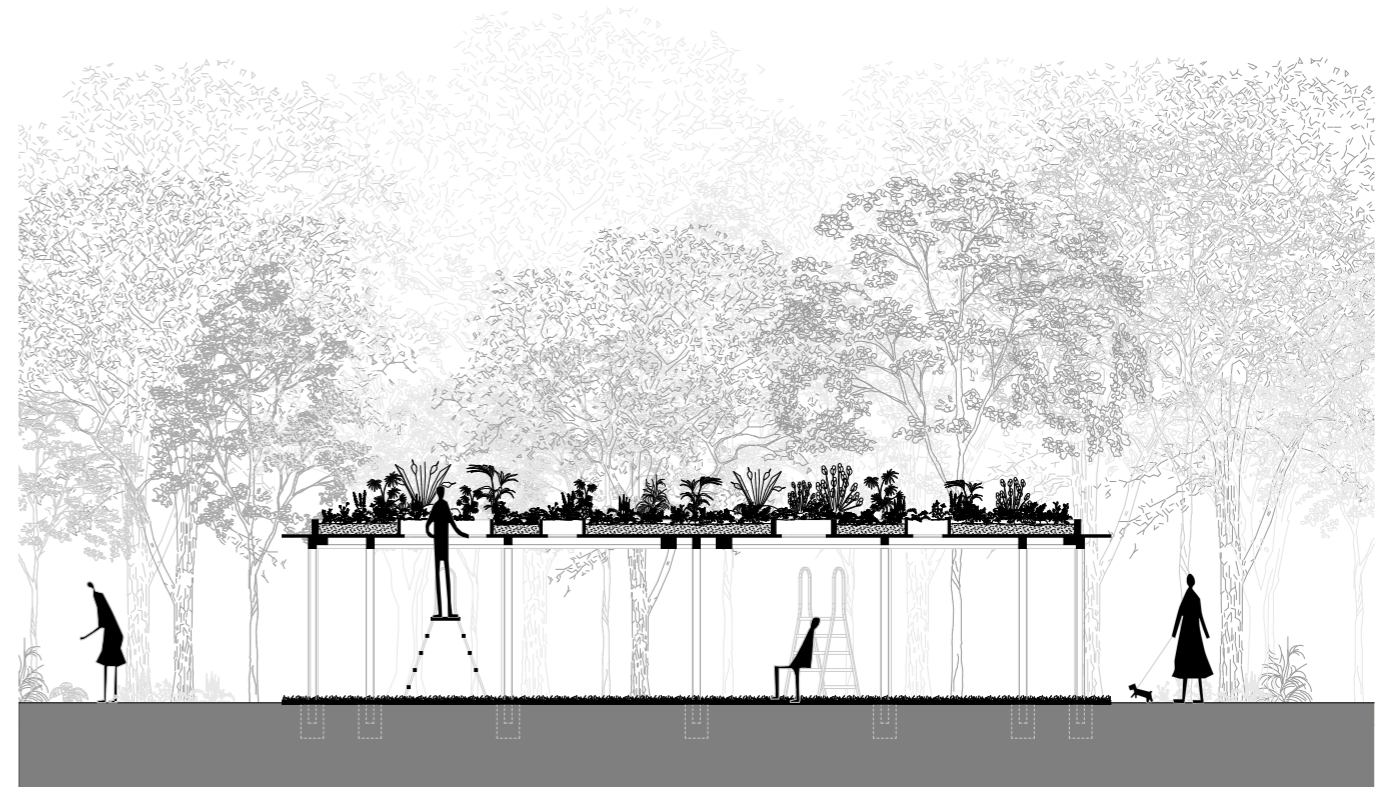
IRIS VERSICOLOR



LILIUM CANDIDUM



**ELEVATION** 1:100



**SECTION** 1:100