

# A space to enjoy the rain and watch the moss grow

When did we build the first garden? Was it when we replicated the first plant?  
Or rather when we raised the first fence? In this sense, is the garden inextricably linked with the dwelling?

Prompted by these questions, the intervention is an attempt to recreate a primeval gesture: to materialize our first contact with nature and to negotiate the fluid boundaries between our bodies and the outdoors.

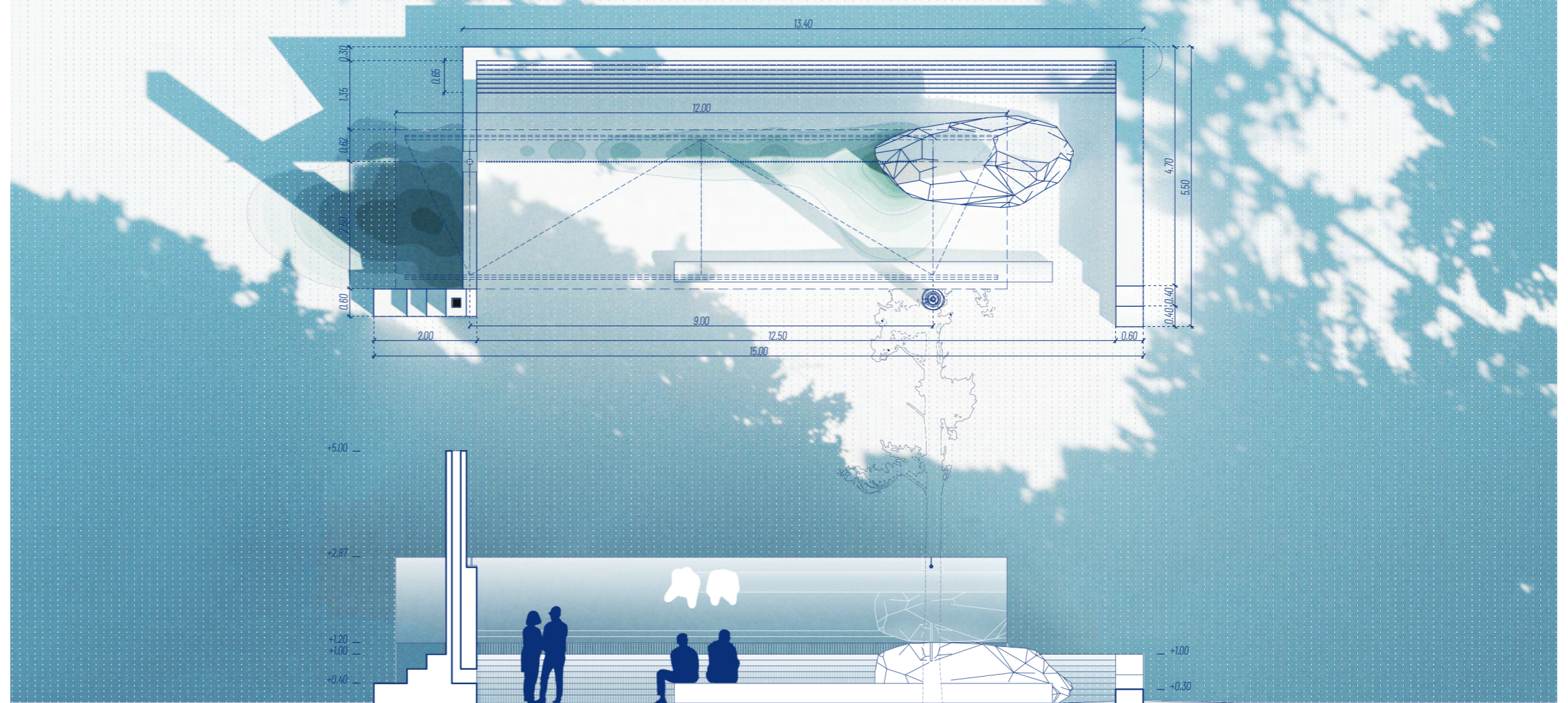
The main design driver is the rainwater and its ability to create microclimates in creases, nooks, and any small holes which can hold water. Consisting primarily of moss and fungi species, they illustrate the first step in ecological succession.

On the invisible boundary between forest and meadow, facing northwards, the curious visitor will find a space to enjoy the rain and watch the moss grow.

The installation is an over-sized aluminium gutter positioned gently one meter above ground. Its sheltering underside is polished to mirror the forest ground and the trees in the back, thus creating a fully immersive experience. It is supported on one side by a large rock, on which rainwater flows, enabling a new ecosystem to form. The other side sits on a continuous brick wall that becomes a fireplace and ends in stepped seating. The brick is reclaimed from neighbouring sites and potentially carries already spores in its porous structure.

The folded edge is drilled to choreograph the rain - constructed rain.

As the moss grows, the visitor, completely immersed and almost frozen in time, is invited to sit, breath, listen, and focus on the small wanders unraveling before him.



Plan and section showing the choreography of the rain. Scale 1:100

## Observation

Matrix of previous encounters with moss in the boreal forest. Long walks in the woods to observe, understand, and record a pattern of good hosts and behaviours of new ecosystems.



Suggested vegetation - native moss, lichen and mushroom species

## Prototype

A plastic box filled with soil, kept outside fully exposed, as a device for studying ecological succession in an ecosystem constrained by nothing but the size of its container.



Summer - 12 months

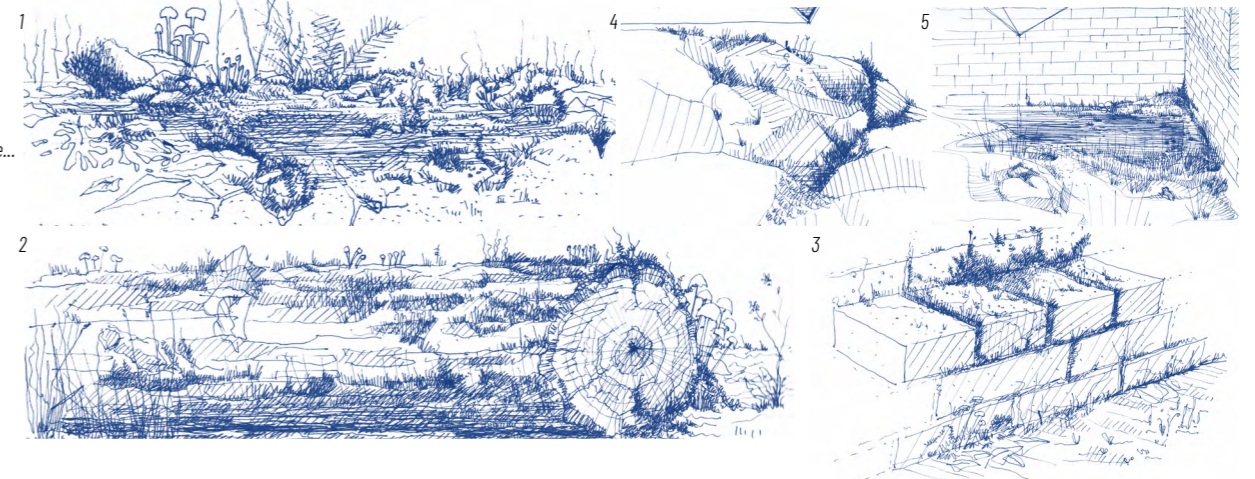


Winter - 18 months



## Intervention

We wish to take the experiment further and study the balance between control and hazard in the creation process. The design of the rainwater flow and trails will determine the configuration of these new ecosystems, but the final shape belongs to the natural processes. The beauty lies in the feeling of anticipation of the final result.

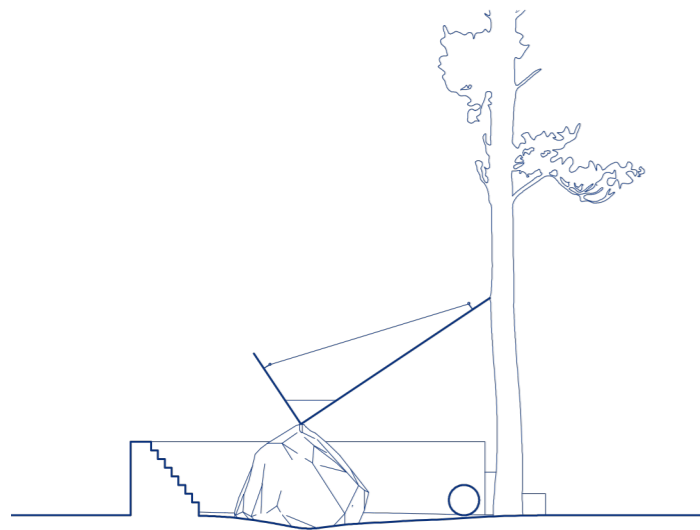


A space to enjoy the rain and watch the moss grow

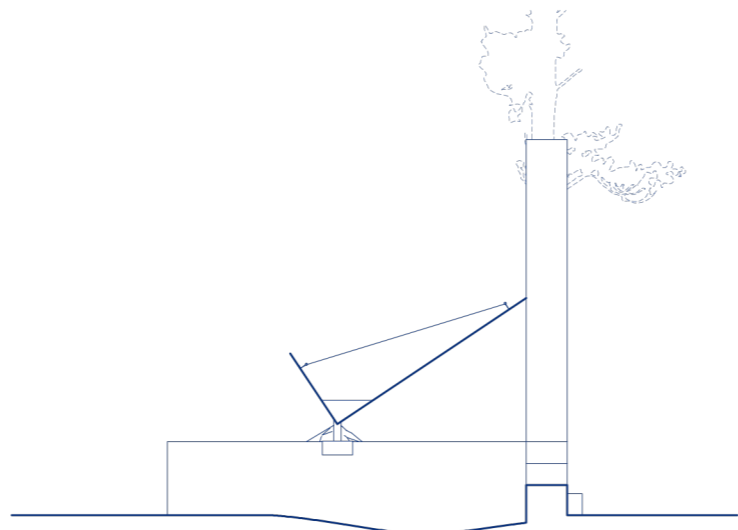
Jardins de Métis 29.11.2022



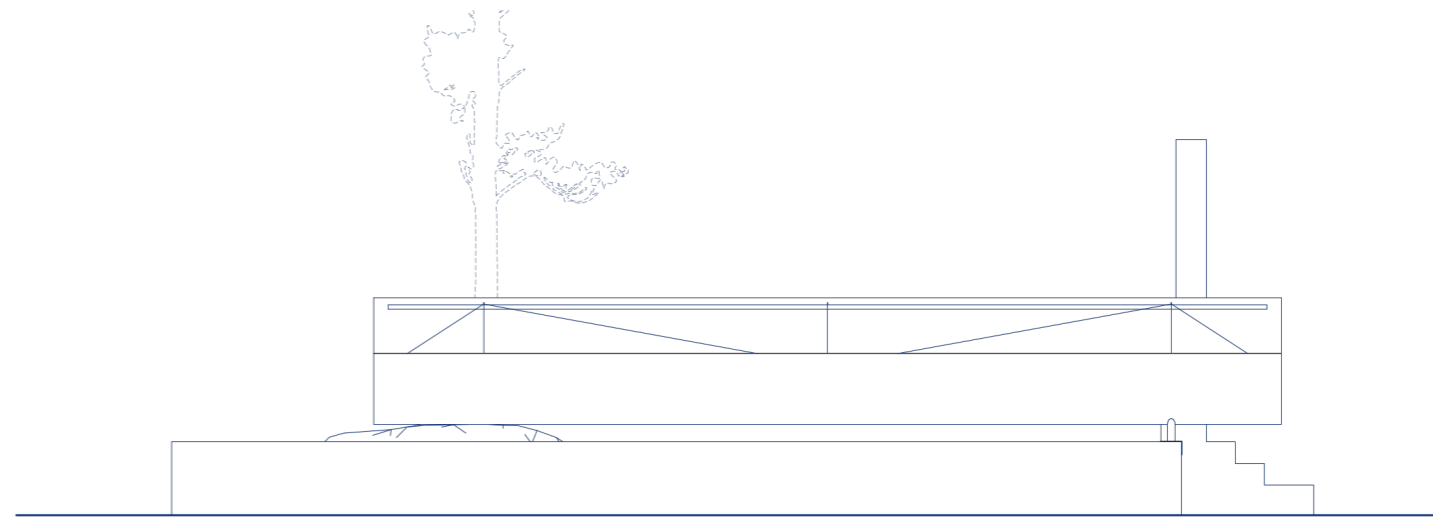
As you walk out of the forest, you will encounter a peculiar space that seems to frame a piece of forest ground. It feels like an inviting space and you wish to linger there for a while, protected, feeling the presence of the rain and just looking at the moss growing.



Cross section inside the space, through the brick wall. Scale 1:100



View from the East. Scale 1:100



View from the North. Scale 1:100

0 5m