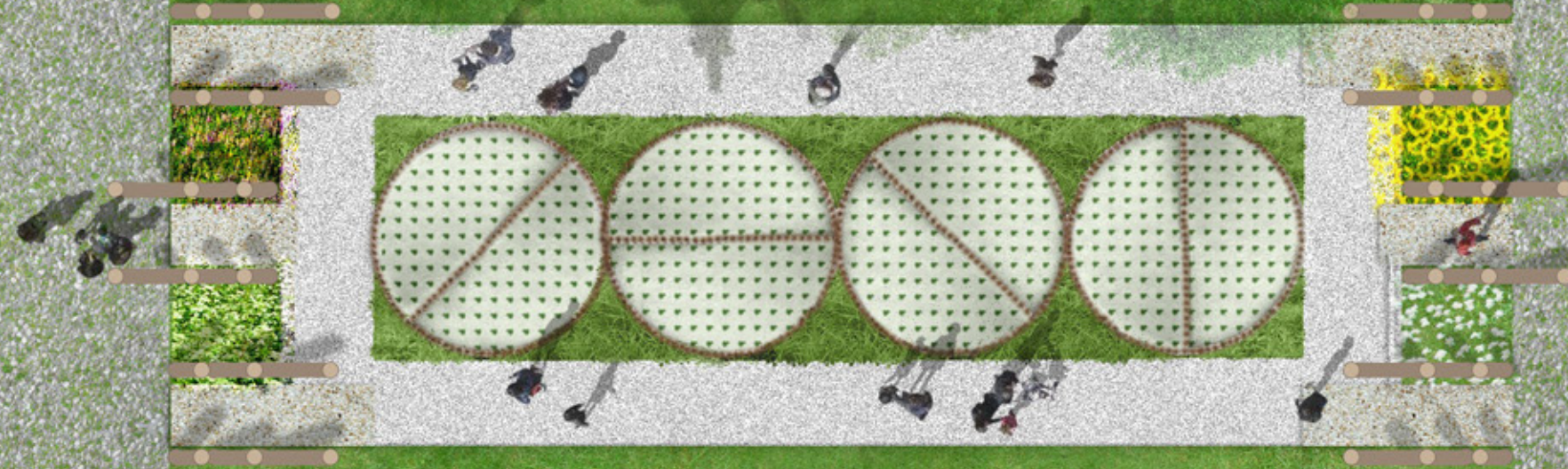


WISHING WELL

evokes a familiar sentiment in an unsuspecting setting. The past two years have been much like feeling around in the dark, sometimes with nothing in reach but hope. At the same time, the scale of our impacts on Earth has tipped, and we are sliding. Some of us have changed virtually everything in our daily lives; others have changed nothing at all. Most of us, however, have made a change or two, which may have led to another, and so on. This, in the grand scheme of things, is the ongoing story of adaptation. This project invites visitors into

its centerpiece on any one of four paths, along which a different flowering perennial, each originally suited to a slightly different climate, is planted. At the entrance of each path, visitors are invited to throw a seedball of that plant into the center garden. There, among four halved circles, tilted to create microclimates and built up using hugelculture techniques, your seemingly small, haphazard toss might just land the seed in a favorable condition: however, like climate change, you cannot know what impact your small action might have, but you can see the results and celebrate the successes of others.



PLANT LIST- groundplane

Carex pennsylvatica
pennsylvania sedge

Carex brevoir
plain's oval sedge

SEED LIST - seedballs

Anemone canadensis
canadian anemone

Erigeron spp.
wild buckwheat

Helianthus spp.
sunflower

Lupinus spp.
lupine



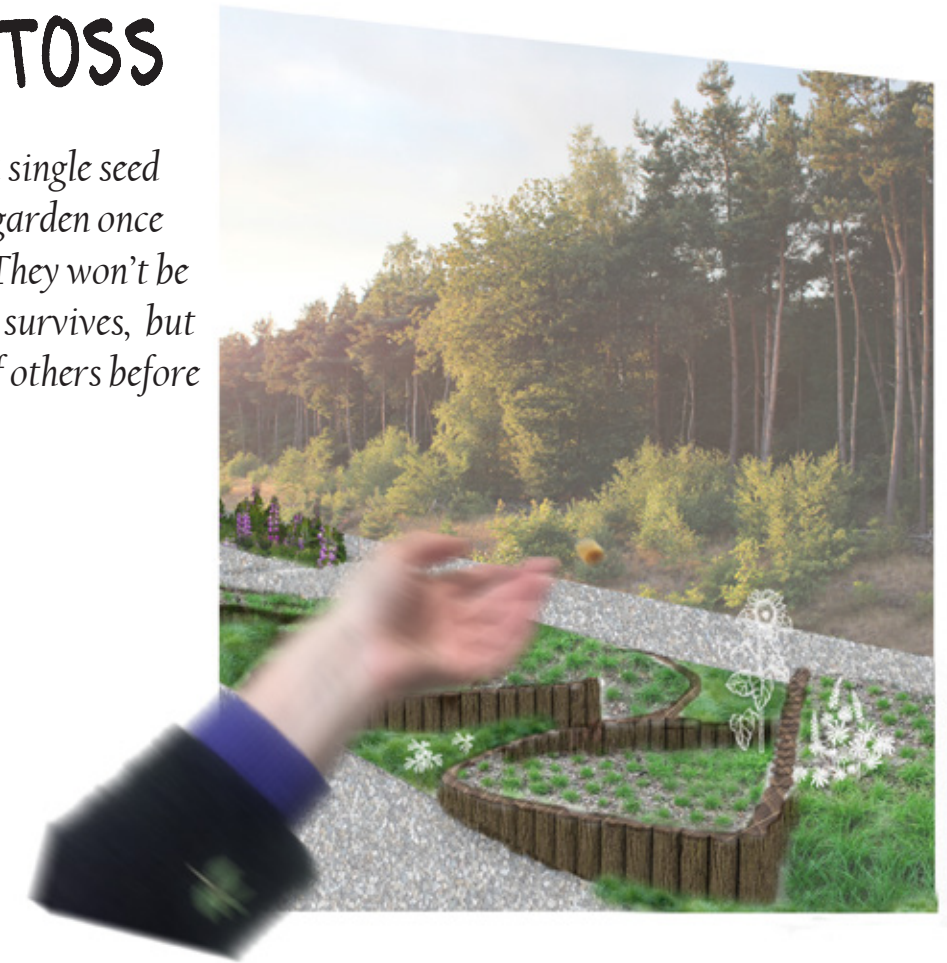
OVERVIEW

As people choose an entrance, they learn about the plant which leads them to the central garden. This knowledge is important for the visitor in the next step.



SEED TOSS

Each visitor receives a single seed ball to throw into the garden once they enter the center. They won't be able to see if their seed survives, but can see the triumphs of others before them.



WHAT WILL GROW?

The spontaneity of this garden will evolve over two years: what will survive? What will take over? Will some of these perennials act like annuals in this environment? Since each plant has slightly different requirements, they may only start growing in one area of the garden.

