

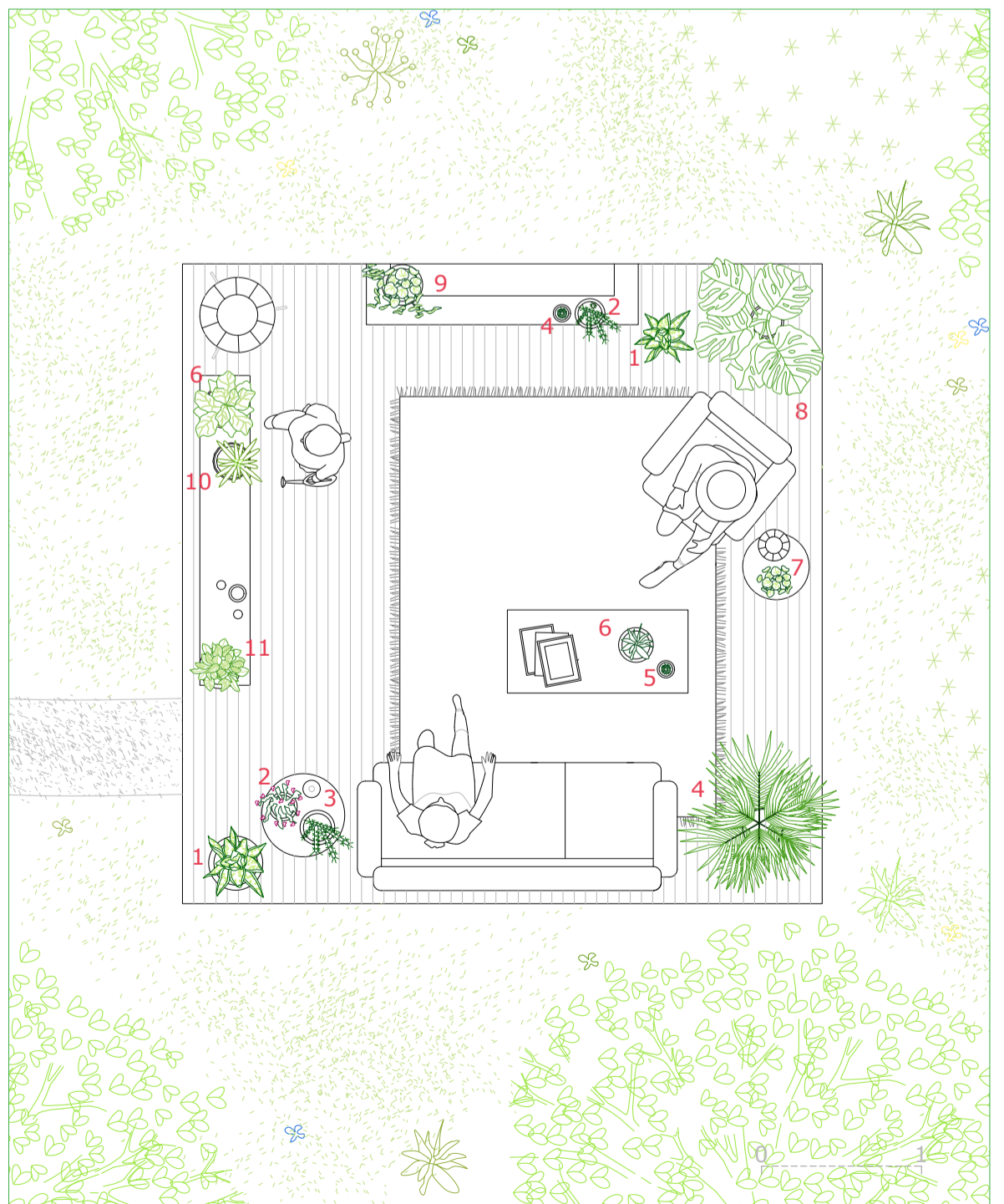


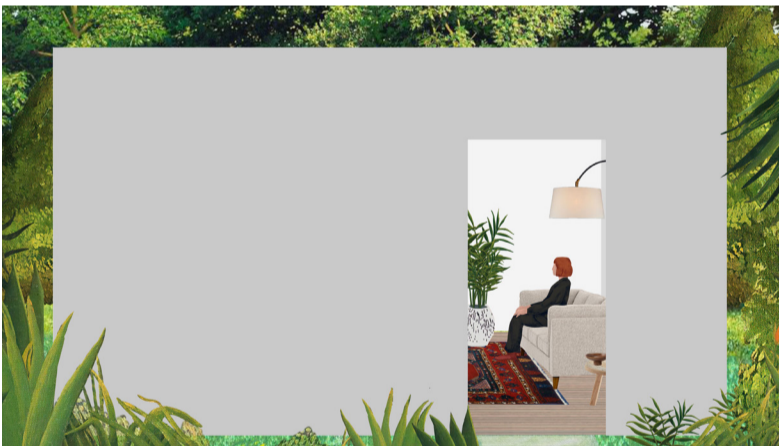
In biology and botany, plant blindness is both a paradoxical and self-evident phenomenon. We tend to ignore the plant life surrounding us - they usually appear and are felt as a big lump of undistinguishable greenery. This phenomenon, however, is somewhat different with indoor spaces. Indoor spaces are increasingly filled with *living* plants, therefore, within those enclosed spaces, plant blindness is not as prevalent; plants are noticed, glanced at, touched, valued, appreciated, seen.

The *living* room installation offers a new perspective on, and blurs the distinctions between, indoor and outdoor plant life. The open space of the *living* room contrasts its usual enclosed nature and therefore invites the visitors to feel, see, and take note of the importance of all plant life. Additionally, the *living* aspect of the room is plant-centered - they are the ones evolving, sharing, and adapting to the environment. Hence, somewhat ironically, the installation presents an indoor garden *within* an outdoor garden: one on hardwood floor and one on soil. The installation also allows for meaningful interactions between the visitors and plant life; the installations' contrasting materiality will encourage them to touch, sit, smell, as well as water the plants, creating a sort of organic, evolving, and adapting *living* room garden.

List of Suggested Plants

- 1 *Dracaena trifasciata* – Snake Plant
- 2 *Schlumbergera truncata* – Christmas Cactus
- 3 *Myrtillocactus geometrizans* – Blue Myrtle Cactus
- 4 *Chamaedorea elegans* – Parlour Palm
- 5 *Echinocactus grusonii* – Golden Barrel Cactus
- 6 *Codiaeum variegatum* – Garden Croton
- 7 *Pilea peperomioides* – Chinese Money Plant
- 8 *Monstera deliciosa* – Swiss Cheese Plant
- 9 *Epipremnum aureum* – Golden Pothos
- 10 *Aloe vera* – Aloe Vera
- 11 *Zamioculcas zamiifolia* – ZZ Plant





How come do I know this snake plant and this Christmas cactus and not this little tree right behind them?

Through these illustrated degrees of enclosure, the perspective and consideration of plants changes and adapts. From being completely enclosed to entirely open, the varying stages of enclosure highlight how different the installation would feel as well as how continuous the 'indoor' space actually is when juxtaposed with the outdoor one. *A garden within a garden. Plants are plants are plants.*

- 1 Pile foundation
- 2 Local cedar wood flooring
- 3 Thrifted furniture & pots
- 4 Recycled brick fireplace

