

Concept

Pick up a newspaper from the stand and picture 250 million trees.

Now, picture 250 million being felled each year.

That is roughly 684,000 trees a day.

And for what?

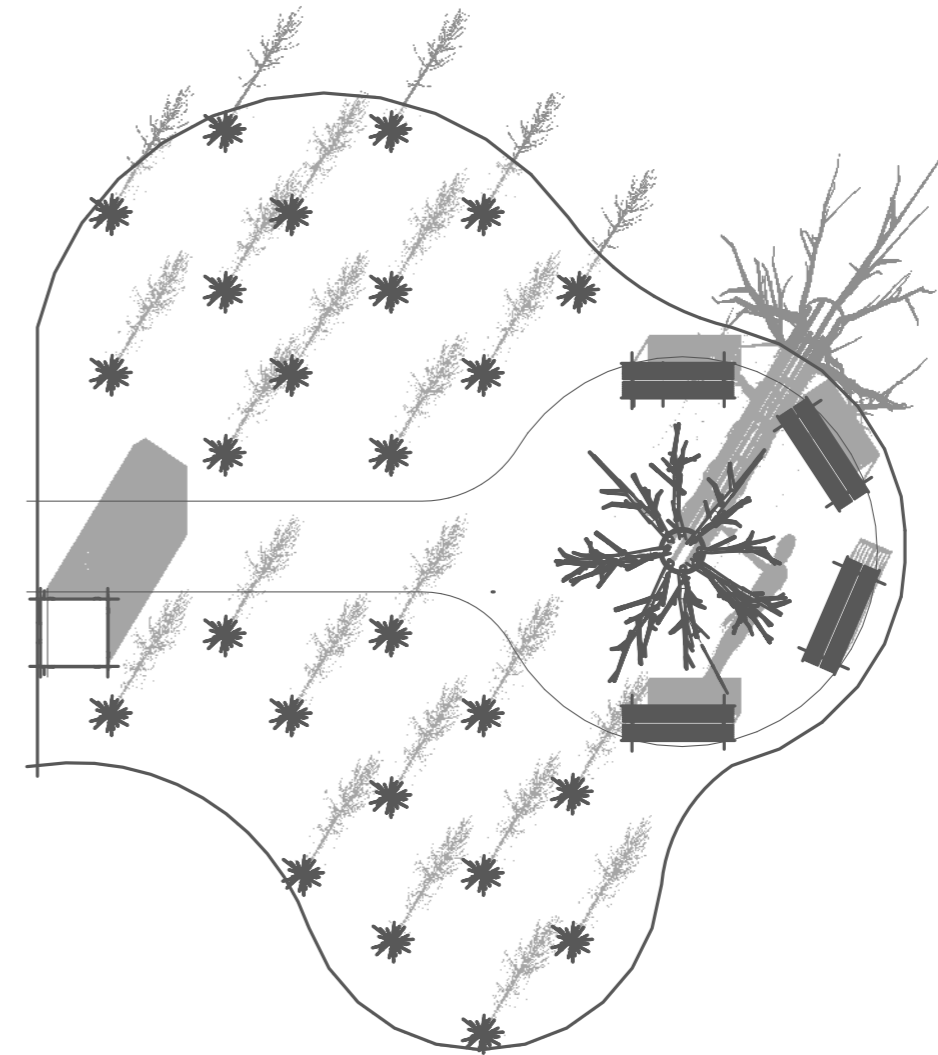
Your daily intake of news.

The boundary lines are blurred, a tree plantation merges with the surrounding mature conifers. The central dark metal tree stands empty; perhaps this is its heartwood bark underfoot. Maybe soon the void will be refilled with old newspapers from passers by, who can slip them through the metal bars, scrunch pages up, to take a shot or maybe flown through the gaps.

This tree's life purpose is to hold your recycled paper but the trees that made the papers could have been so much more.

This paper won't grow again, it can't absorb carbon again.

Does the physical newspaper still have a place in this modern carbon conscious world or is the cost too high?

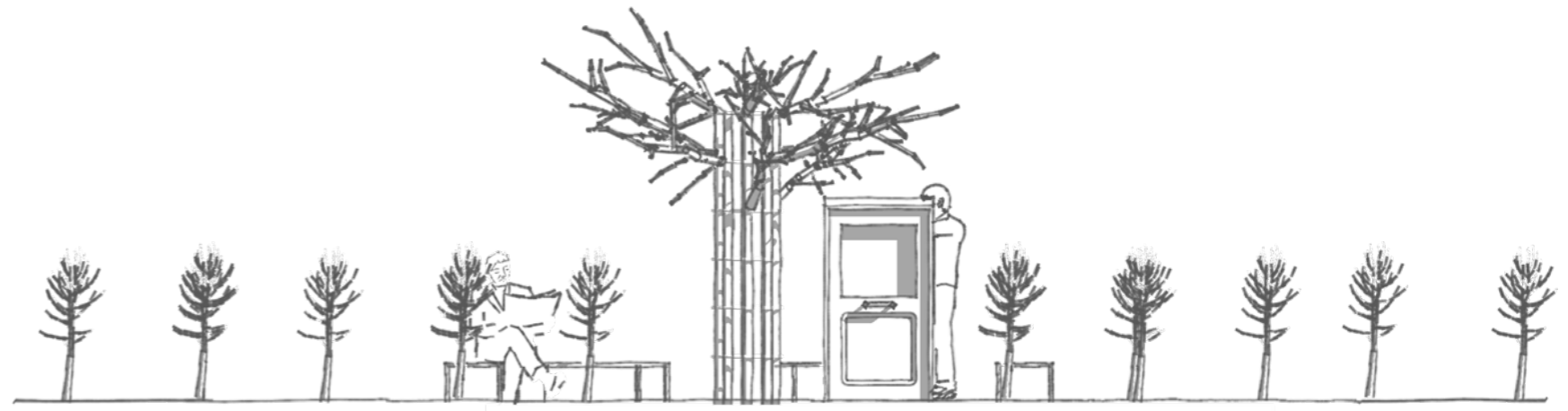


Plan : 1:100 @ A3

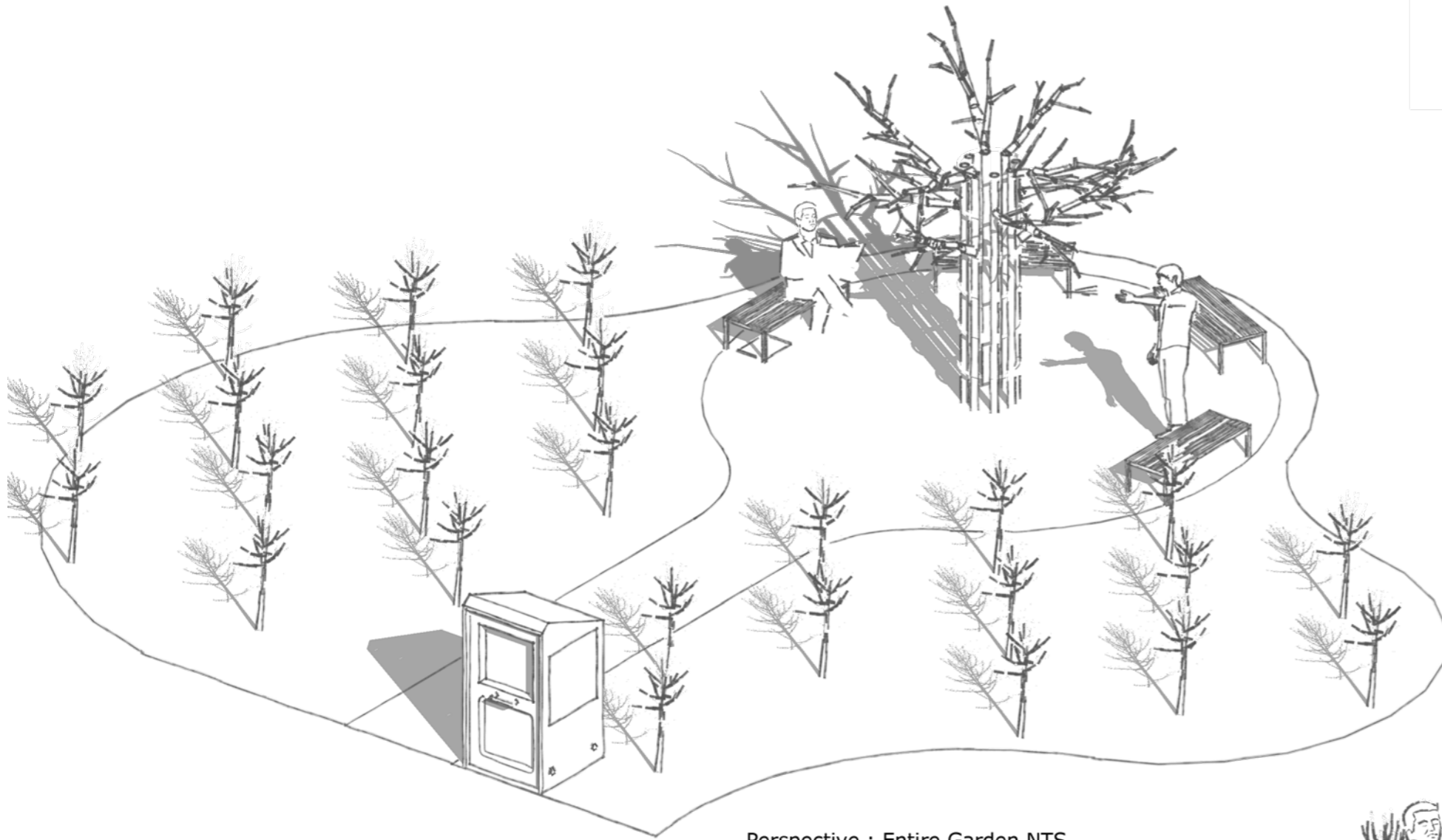
Planting

Young pine and other soft woods such as hemlocks or larch. Cultivars may be selected if needed due to the spruce bud worm

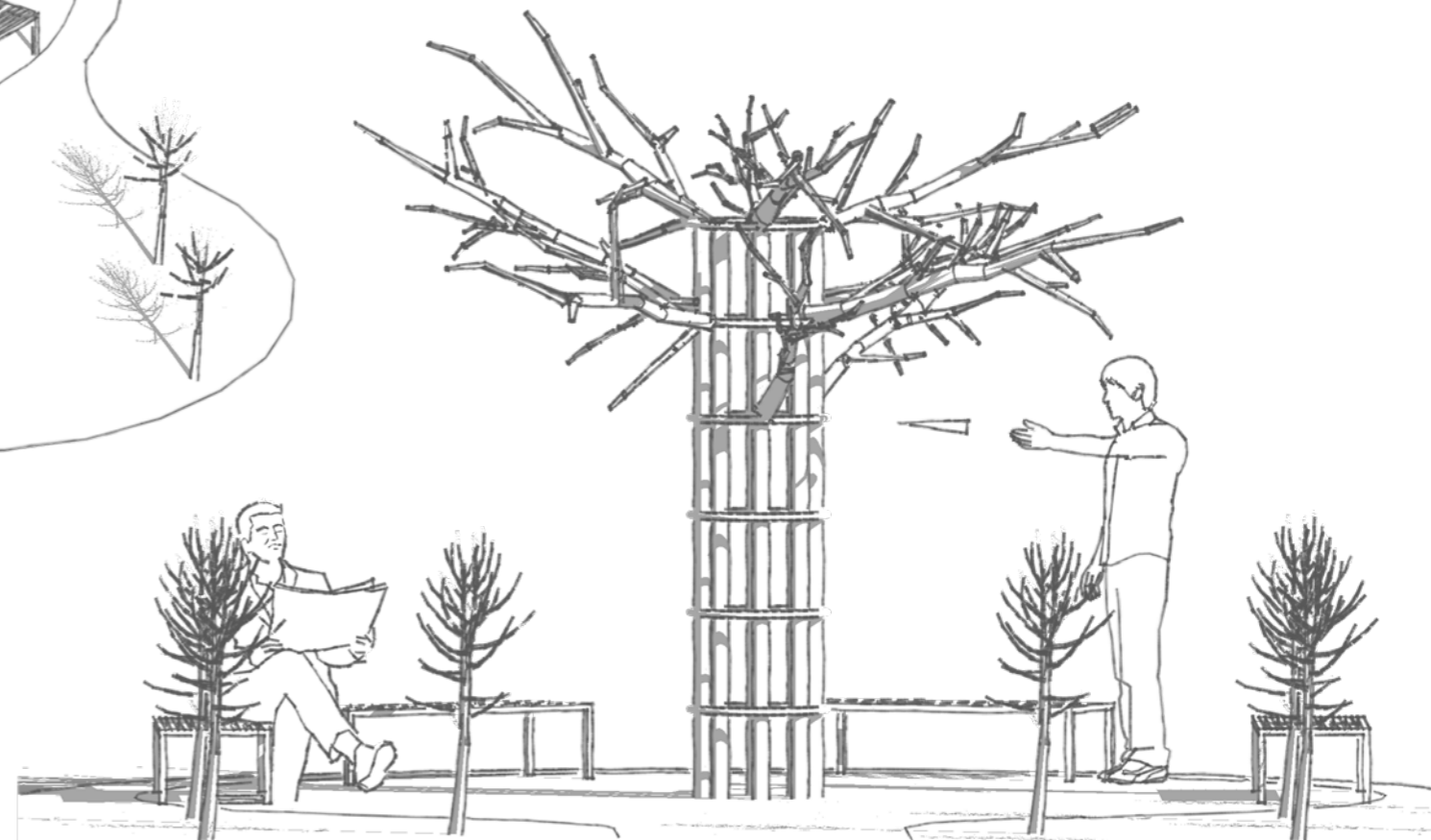
Existing low woodland vegetation to be kept, reduced if necessary



Elevation : Scale 1:50 @A3



Perspective : Entire Garden NTS



View : Central garden space 1:30 @A3