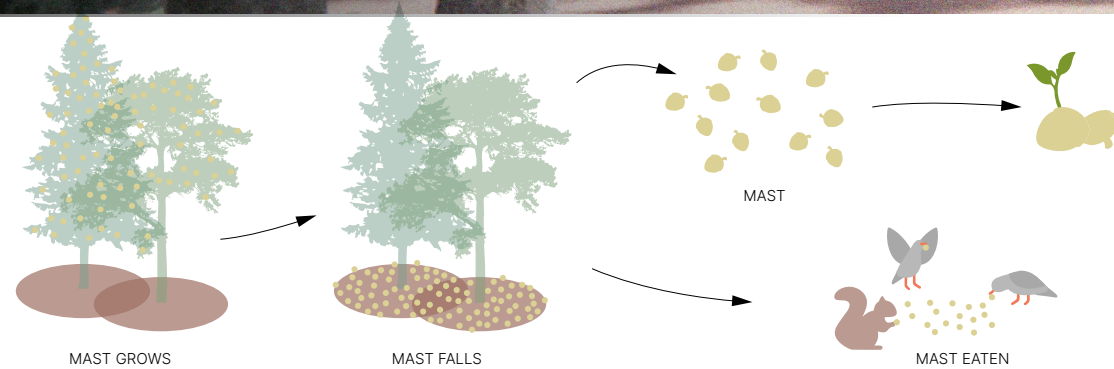




MAST YEAR




Have you noticed that the trees in your neighbourhood have simultaneously dropped their fruits, leaving you wading through a carpet of maple keys and acorns? You could be witnessing a *Mast Year*, where trees overproduce and drop huge amounts of mast (or fruit) to assist the survival of their offspring. This phenomenon occurs across cities and countries, where multitudes of trees synchronize and drop their masts at the same time to prevent wasted effort.

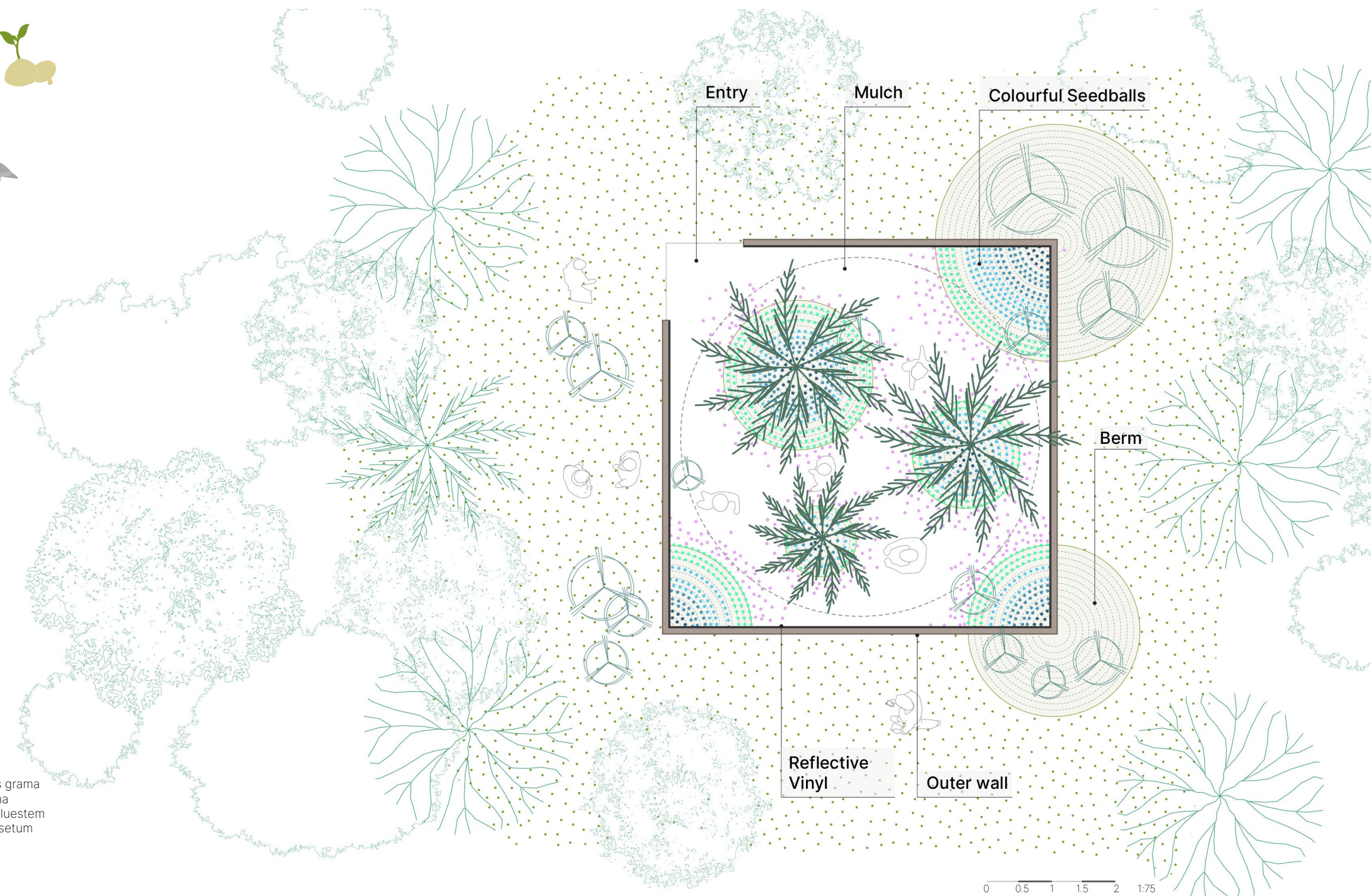
Mast Year depicts this spectacle of survival efforts in a whimsical way. Encased within a room lined with reflective surfacing, the mirrored surfaces give the illusion of an abundant mast year. Masses of vibrant seedballs litter the ground, spilling over mounds and clustering at tree trunks. These seedballs represent the fallen mast, and throughout the installation, they can be observed, scattered by visitors within the room, or taken home to plant. The installation alludes to how seed saving and being proactive can help plants thrive.

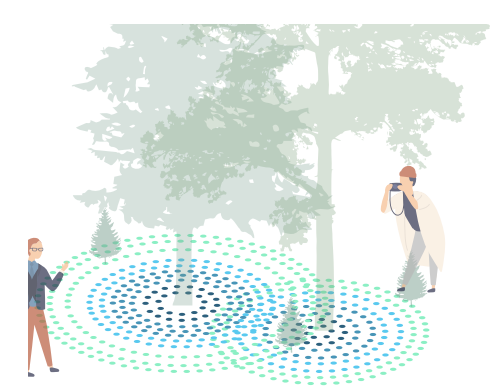
 **Trees**
Picea glauca / White Spruce (existing)

 *Picea glauca* / White Spruce (plugs/seedlings)

 **Seedballs - Forbs**
Anchusa capensis / Bugloss
Allium spp. / Flowering chive
Primula spp. / Primrose
Silene spp. / Silene
Dianthus spp. / Dianthus
Cosmos bipinnatus / Cosmos
Linum usitatissimum / Flax
Tropaeolum majus / Nasturtium

Seedballs - Grasses
Bouteloua curtipendula / Side oats grama
Bouteloua gracilis / Blue oats grama
Schizachyrium scoparium / Little bluestem
Pennisetum alopecuroides / Pennisetum
Miscanthus sinensis / Miscanthus





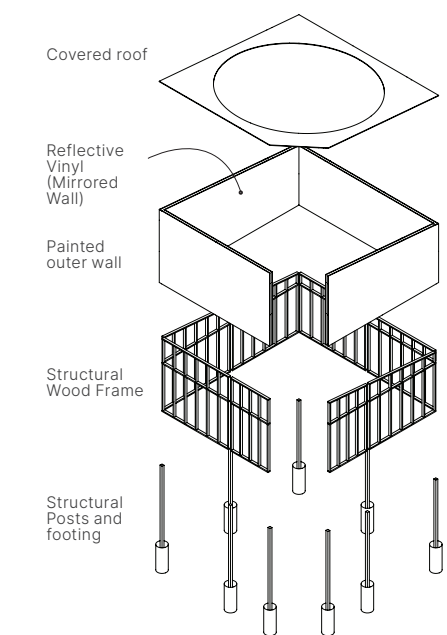
OBSERVE



SCATTER



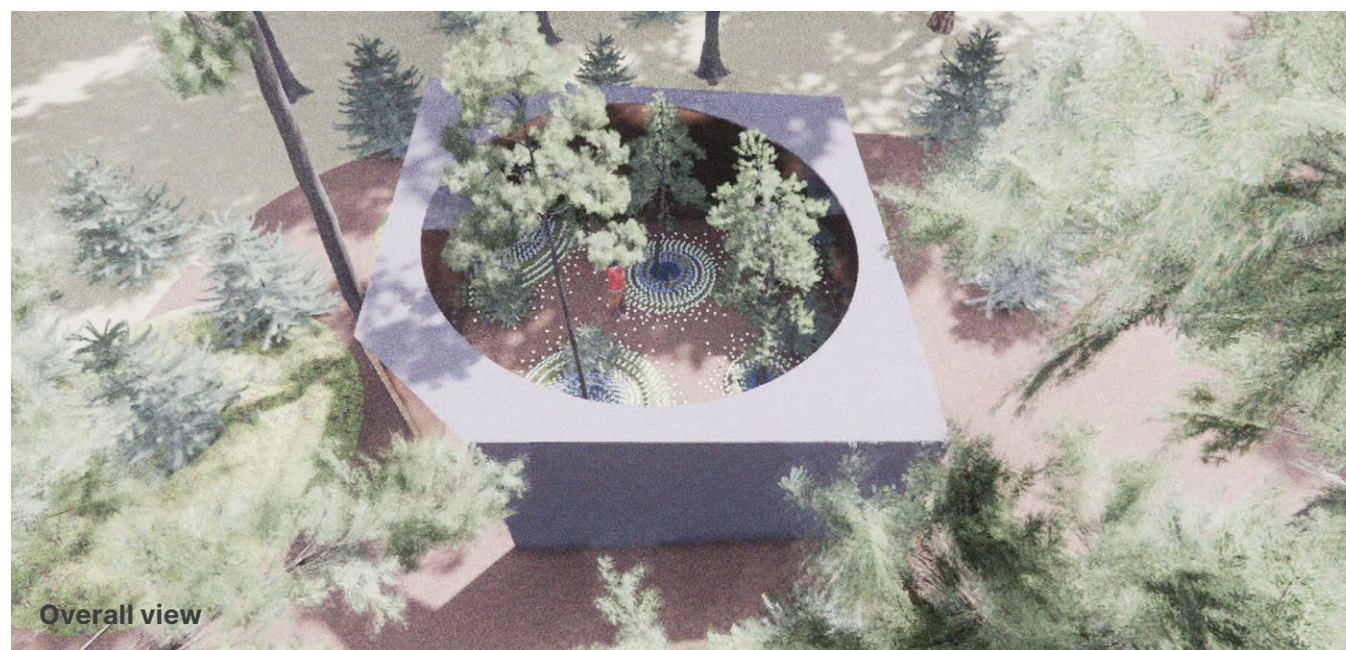
TAKE HOME



Room assembly



Interior view of the mirrored room



Overall view



Entry to the Mast Year room