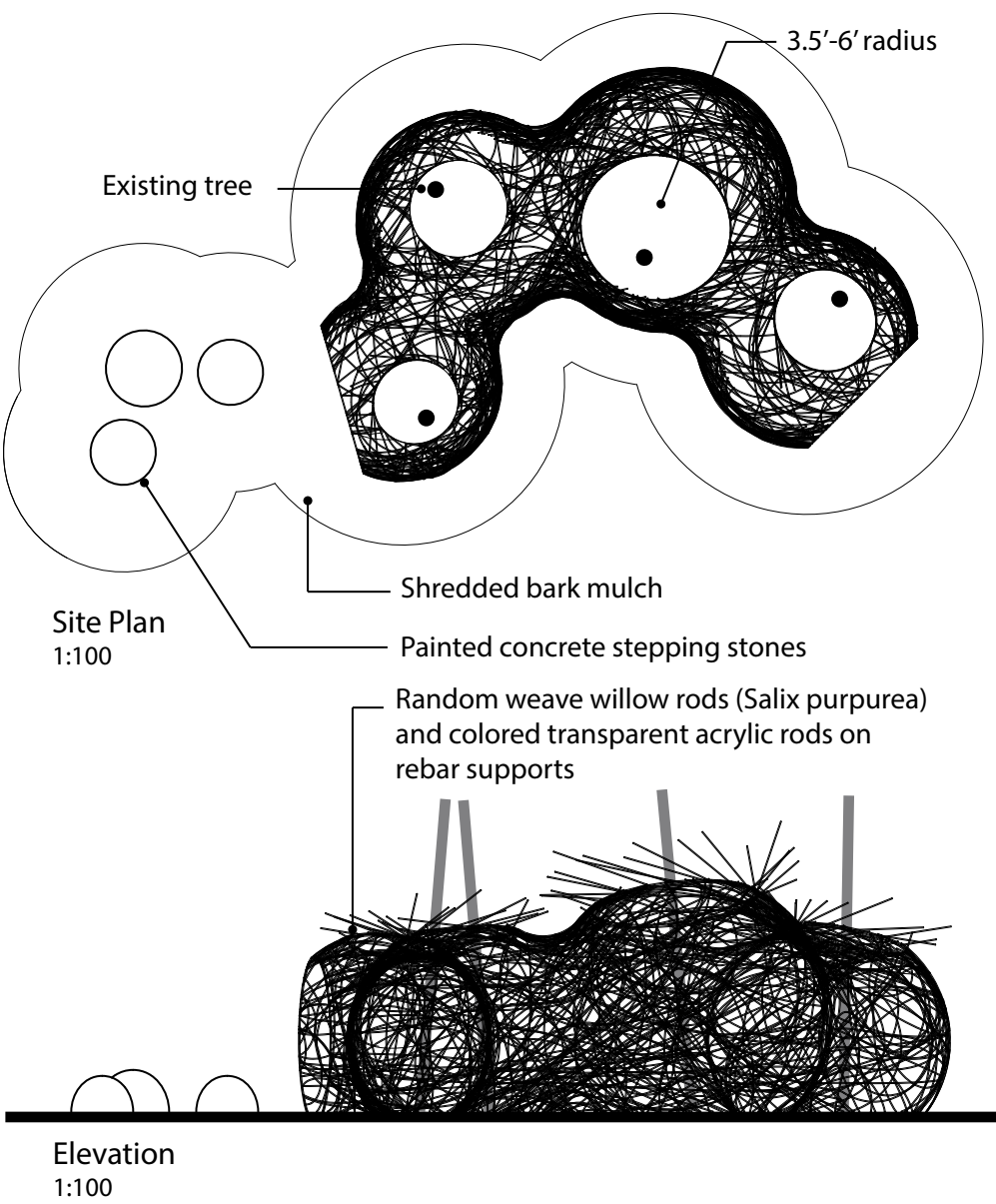


Salix Matrix

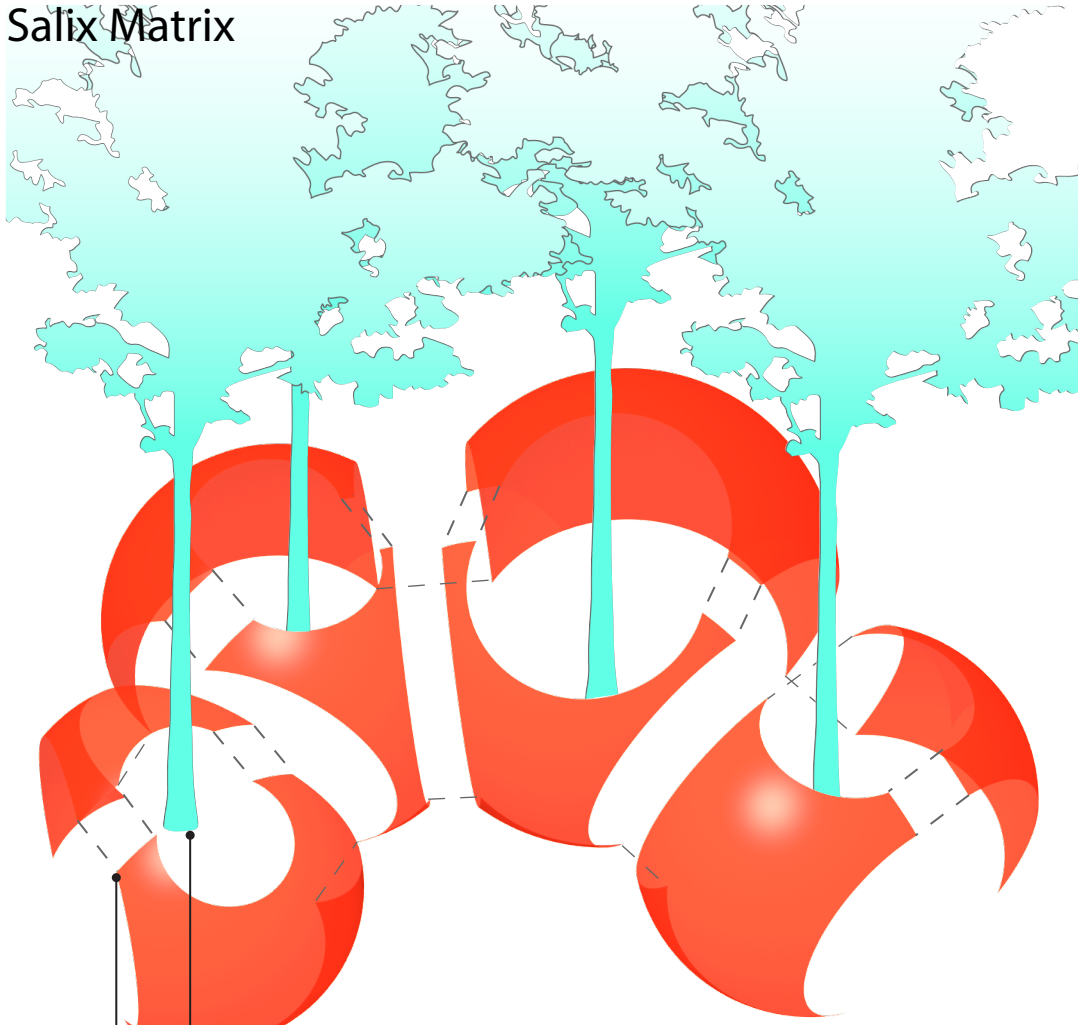
Quebec's forests are critical for thriving communities. Existing forests must be preserved and new planting must respond to changing climate conditions far into the future. The project weaves together a small private forest and its visitors using contemporary technology and traditional customs of making. This network of trees and people is a creative expression of communal strength, flexibility and resilience. It challenges our understanding of forest management practice and the complex relationship between society and the natural environment.

A series of thresholds indicate a path forward. Several volumes of woven willow and glowing acrylic rods wrap existing trees. The uneven ground around the roots, the rough bark, and the canopy above draw the visitor's attention while negotiating the path. The project is designed and fabricated using modern digital methods as well as ancient weaving techniques common to the region. At completion the sustainably harvested willow rods will be mulched and the other materials recycled.

Willow is a vegetal technology locally developed for a variety of uses. Together with existing forests it also serves as an important carbon sink. Preserving assets while searching for new opportunities offers a potential strategy for communities confronting climate change.



Salix Matrix



The construction can be configured around a few existing trees on varying terrain

Each sphere is assembled from two painted #3 rebar sections. The willow rods and 1/4" diameter colored acrylic rods are partially installed on the frames offsite.

At the site the frames are placed onto foundation blocks and ziptied together. Installation of the rods is completed in place.

